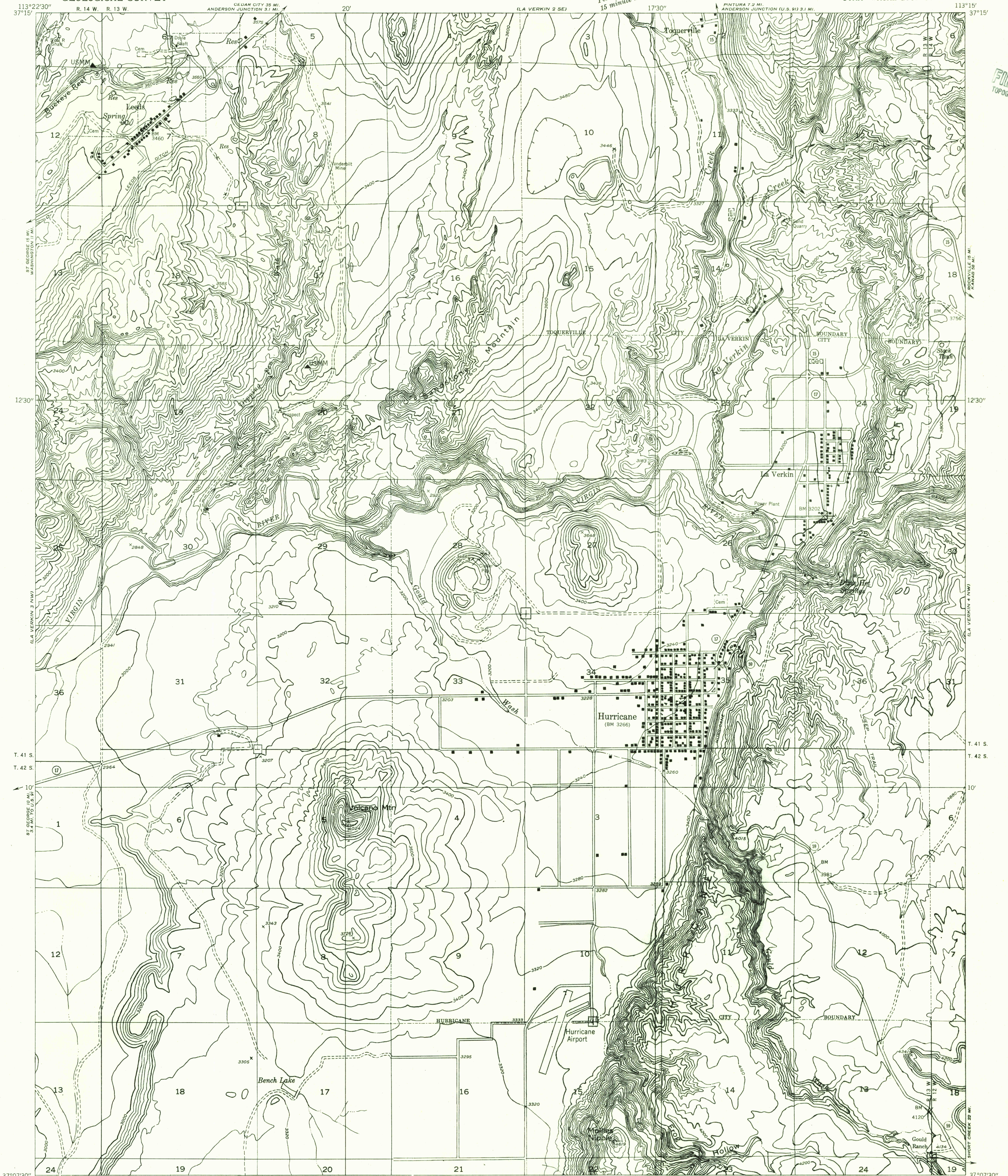


DEPARTMENT OF THE INTERIOR
GEOLOGICAL SURVEY

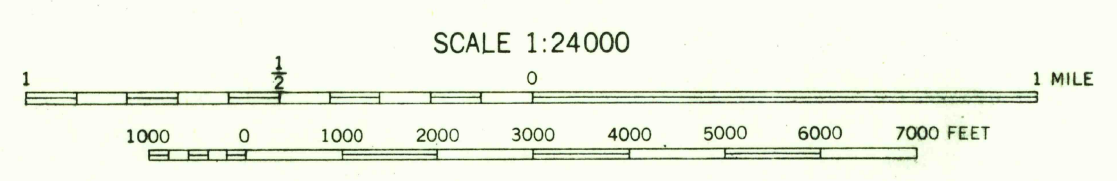
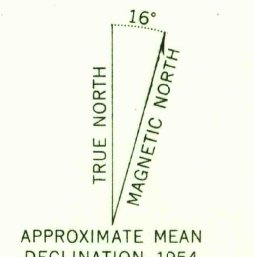
Preliminary edition
Pending completion of 1:62,500 scale
15 minute maps covering this area

LA VERKIN 3 NE QUADRANGLE
UTAH—WASHINGTON CO.



U.S.G.S.
FILE COPY
TOPOGRAPHIC DIVISION

113°22'30"
37°07'30"
R. 14 W. R. 13 W.
Cedar City 38 MI.
Anderson Junction 31 MI.
Pintura 7.2 MI.
Anderson Junction (U.S. 91) 3.1 MI.
ST. GEORGE 18 MI.
WASHINGTON 11 MI.
ST. GEORGE 10 MI.
3.4 MI. TO U.S. 91
MAPPED BY THE GEOLOGICAL SURVEY 1954
Topography by multiplex methods from
aerial photographs taken 1953
Dashed land lines indicate approximate location
Symbols and other detail herein
drawn for 1:62,500 scale publication



CONTOUR INTERVAL 40 FEET
DATUM IS MEAN SEA LEVEL

USGS
Historical File
Topographic Division

U.S.G.S.
FILE COPY
TOPOGRAPHIC DIVISION

ROAD CLASSIFICATION
Improved ——— Unimproved - - - - -

LA VERKIN 3 NE, UTAH
N3707.5-W11315/7.5