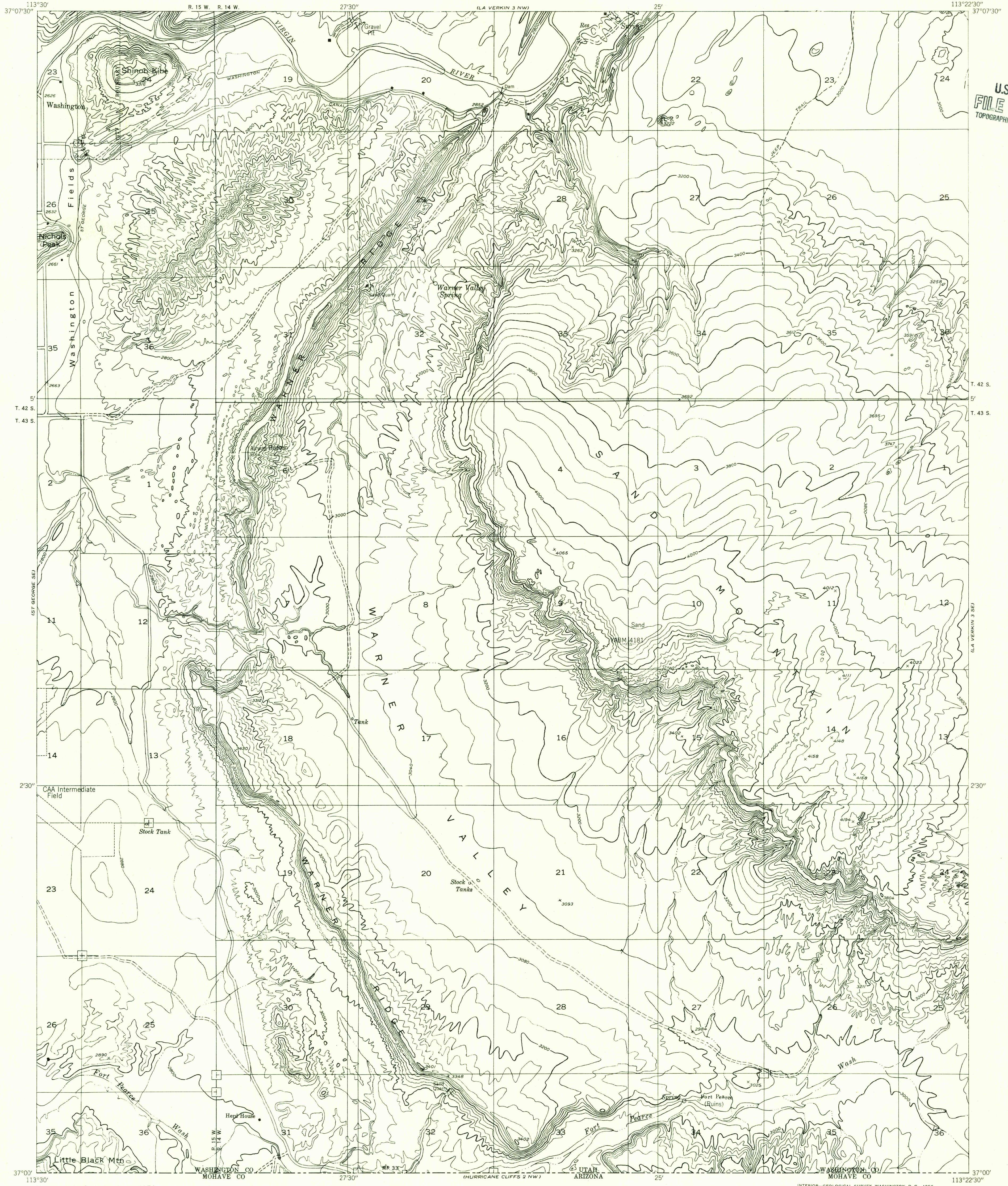


DEPARTMENT OF THE INTERIOR
GEOLOGICAL SURVEY

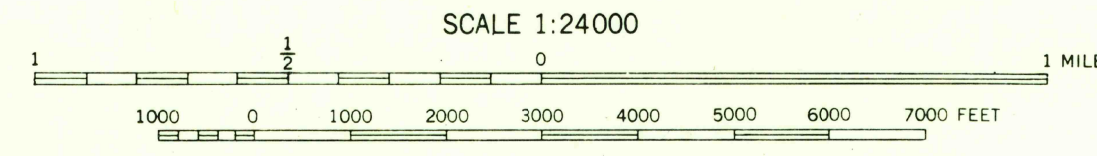
Preliminary edition
Pending completion of 1:62,500 scale
15 minute maps covering this area

LA VERKIN 3 SW QUADRANGLE
UTAH—WASHINGTON CO.



U.S.G.S.
FILE COPY
TOPOGRAPHIC DIVISION

Mapped by the Geological Survey 1954
Topography by multiplex methods from
aerial photographs taken 1953
Symbols and other detail herein
drawn for 1:62,500 scale publication



CONTOUR INTERVAL 40 FEET
DATUM IS MEAN SEA LEVEL

USGS
Historical File
Topographic Division

U.S.G.S.
FILE COPY
TOPOGRAPHIC DIVISION
LA VERKIN 3 SW, UTAH
N3700—W11322.5/7.5