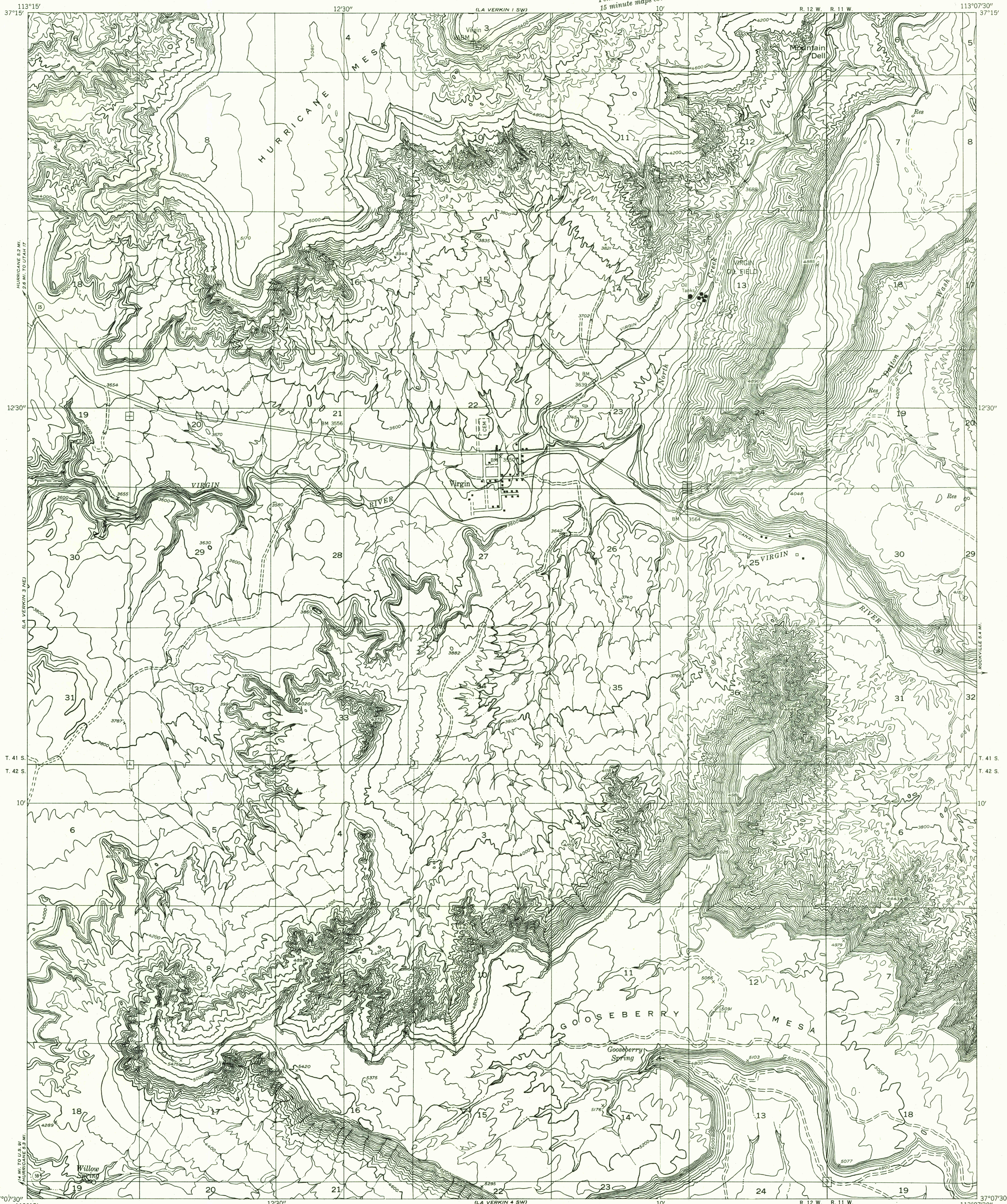


DEPARTMENT OF THE INTERIOR
GEOLOGICAL SURVEY

Preliminary edition
Pending completion of 1:62,500 scale
15 minute maps covering this area

LA VERKIN 4 NW QUADRANGLE
UTAH—WASHINGTON CO.



U.S.G.S.
FILE COPY
TOPOGRAPHIC DIVISION

Mapped by the Geological Survey 1954
Topography by multiplex methods from
aerial photographs taken 1953
Symbols and other detail herein
drawn for 1:62,500 scale publication

TRUE NORTH
MAGNETIC NORTH
APPROXIMATE MEAN
DECLINATION, 1954

SCALE 1:24000
1 1/2 1
1000 0 1000 2000 3000 4000 5000 6000 7000 FEET
1 MILE

CONTOUR INTERVAL 40 FEET
DATUM IS MEAN SEA LEVEL

USGS
Historical File
Topographic Division

U.S.G.S.
FILE COPY
TOPOGRAPHIC DIVISION

ROAD CLASSIFICATION
Improved ——— Unimproved - - - - -

LA VERKIN 4 NW, UTAH
N3707.5—W11307.5/7.5

JUL 1 1 1956

2055