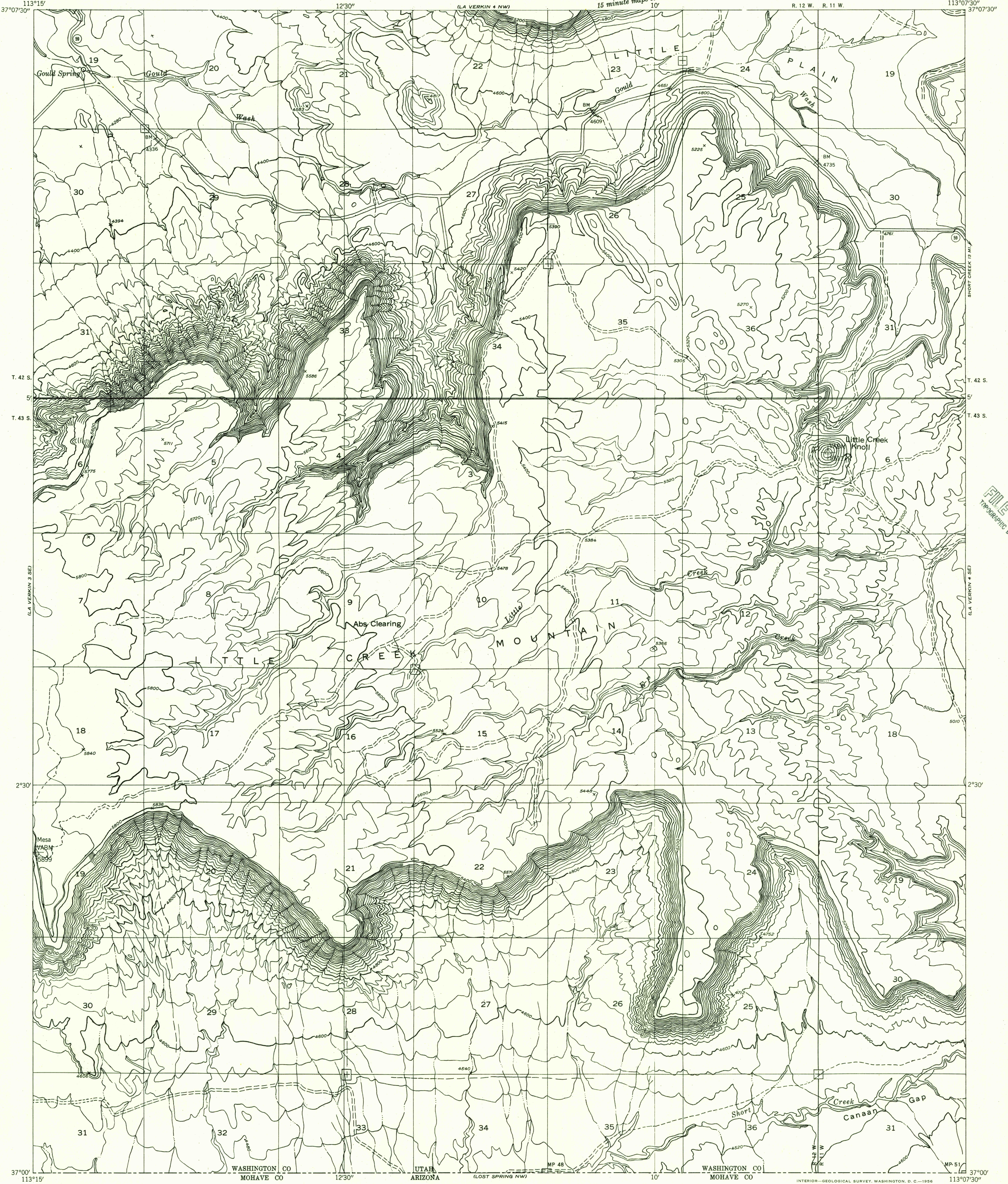


DEPARTMENT OF THE INTERIOR
GEOLOGICAL SURVEY

Preliminary edition
Pending completion of 1:62,500 scale
15 minute maps covering this area

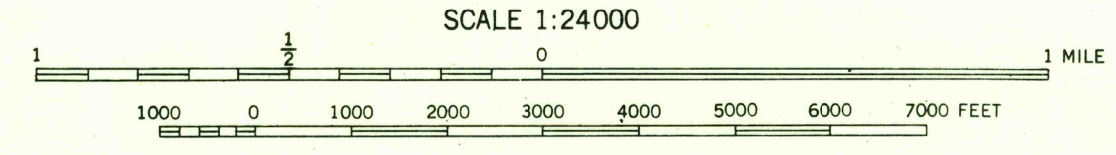
LA VERKIN 4 SW QUADRANGLE
UTAH—WASHINGTON CO.



U.S.G.S.
FILE COPY
TOPOGRAPHIC DIVISION

Map by the Geological Survey 1954
Topography by multiplex methods from
aerial photographs taken 1953
Symbols and other detail herein
drawn for 1:62,500 scale publication

TRUE NORTH
MAGNETIC NORTH
APPROXIMATE MEAN
DECLINATION, 1954



SCALE 1:24000
CONTOUR INTERVAL 40 FEET
DATUM IS MEAN SEA LEVEL

USGS
Historical File
Topographic Division

U.S.G.S.
FILE COPY
TOPOGRAPHIC DIVISION

ROAD CLASSIFICATION
Improved ——— Unimproved - - - - -

LA VERKIN 4 SW, UTAH
N3700—W11307.5/7.5