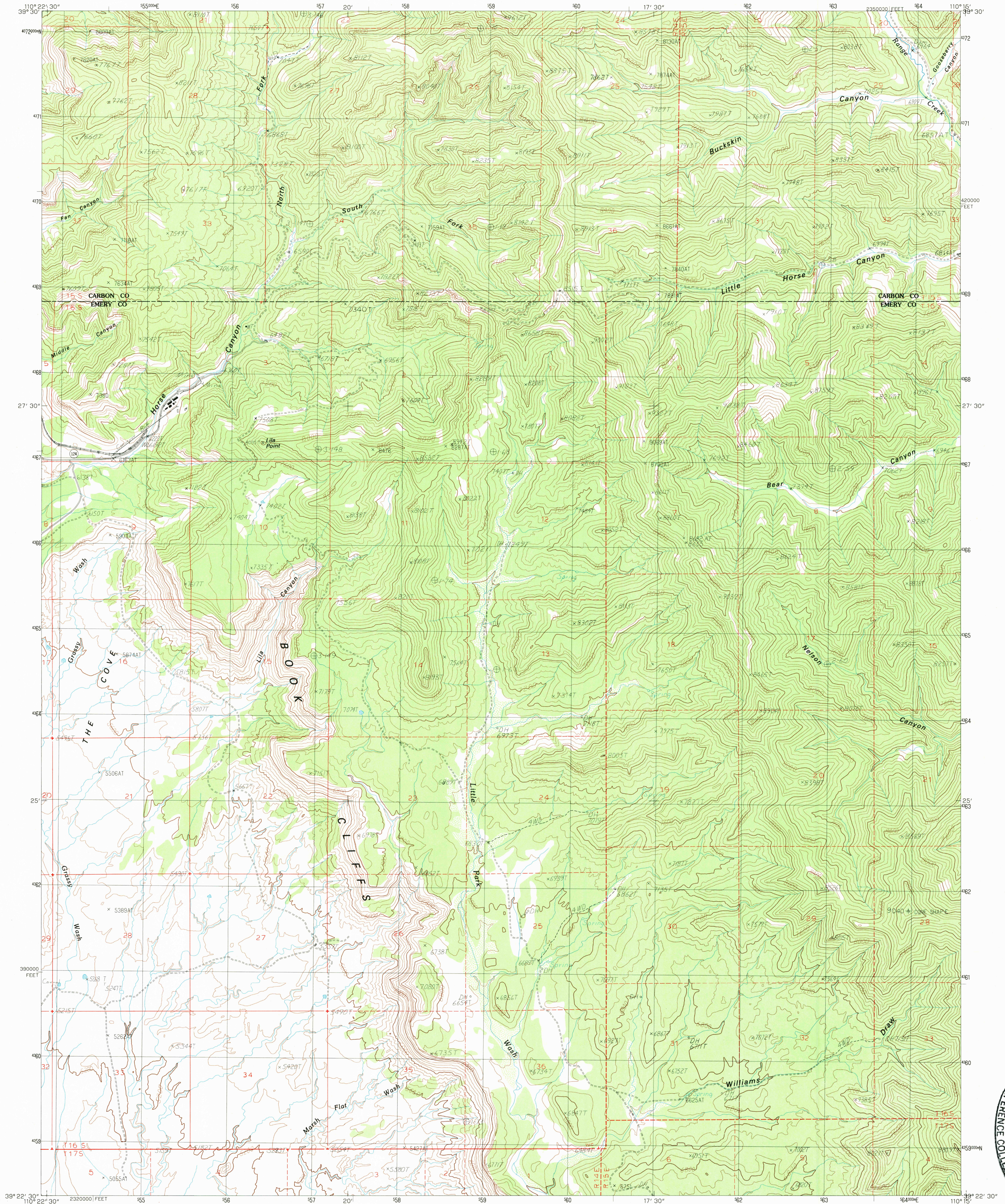


UNITED STATES
DEPARTMENT OF THE INTERIOR
GEOLOGICAL SURVEY

LILA POINT QUADRANGLE
UTAH
7.5 MINUTE SERIES (TOPOGRAPHIC)



USGS NMED RESEARCH
NOV 14 1985
REFERENCE COLLECTION

PRODUCED BY THE UNITED STATES GEOLOGICAL SURVEY
CONTROL BY USGS, NOS/NOAA
COMPILED FROM AERIAL PHOTOGRAPHS TAKEN 1979
FIELD CHECKED 1980 MAP EDITED 1985
PROJECTION LAMBERT CONFORMAL CONIC
GRID: 1000-METER UNIVERSAL TRANSVERSE MERCATOR ZONE 12
1000-FOOT STATE GRID TICKS UTAH CENTRAL ZONE
UTM GRID DECLINATION 13°30' EAST
1983 MAGNETIC NORTH DECLINATION 13°30' EAST
VERTICAL DATUM NATIONAL GEODETIC VERTICAL DATUM OF 1929
HORIZONTAL DATUM 1927 NORTH AMERICAN DATUM
To place on the predicted North American Datum of 1983,
move the projection lines as shown by dashed corner ticks
(7 meters north and 61 meters east)
There may be private inholdings within the boundaries of any
Federal and State Reservations shown on this map
All marginal data and lettering generated and positioned by
automated type placement procedures

PROVISIONAL MAP
Produced from original
manuscript drawings. Infor-
mation shown as of date of
field check. 2

THIS MAP COMPLIES WITH NATIONAL MAP ACCURACY STANDARDS
FOR SALE BY U.S. GEOLOGICAL SURVEY, DENVER, COLORADO 80225
OR RESTON, VIRGINIA 22092

1	2	3	1
4	5	6	2
6	7	8	3

ADJOINING 7.5' QUADRANGLE NAMES

Improved Road
Unimproved Road
Trail
Interstate Route U.S. Route State Route

LILA POINT, UTAH
PROVISIONAL EDITION 1985

39110-D3-TF-024