

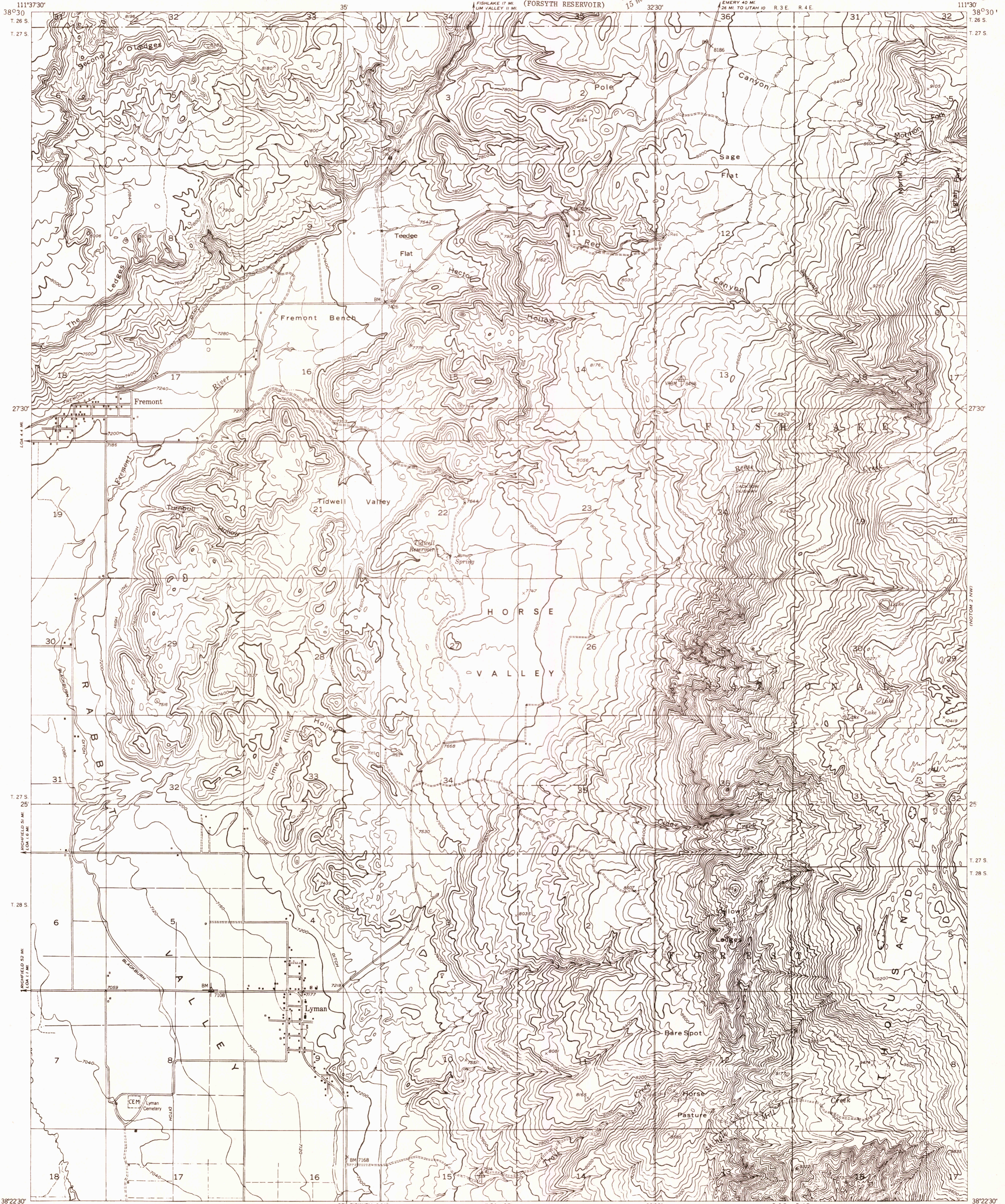
(FISH LAKE)

DEPARTMENT OF THE INTERIOR
GEOLOGICAL SURVEY

Preliminary edition
Pending completion of 1:62,500 scale
15 minute maps covering this area

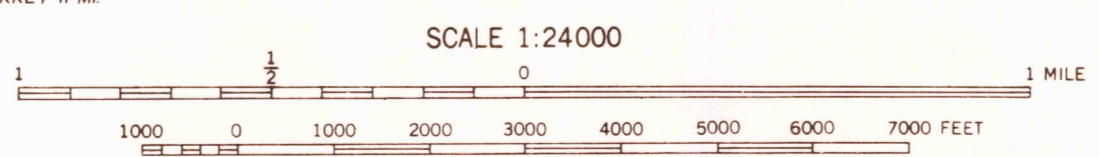
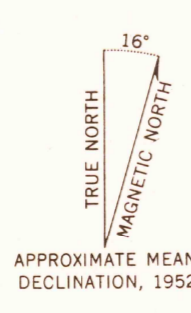
LOA 1 NE QUADRANGLE
UTAH-WAYNE CO.

(CWEYSER PEAK)



111°37'30"
38°22'30"
Mapped by the Geological Survey 1952
Topography by multiplex methods from
aerial photographs taken 1951

(MORONI PEAK)



SCALE 1:24000
CONTOUR INTERVAL 40 FEET
DATUM IS MEAN SEA LEVEL

ROAD CLASSIFICATION
Improved ——— Unimproved =====

JUL 17 1973

LOA 1 NE, UTAH
N3822.5—W11130.7.5

(MOTOM 2 SW)

USGS
Historical File
Topographic Division

1600