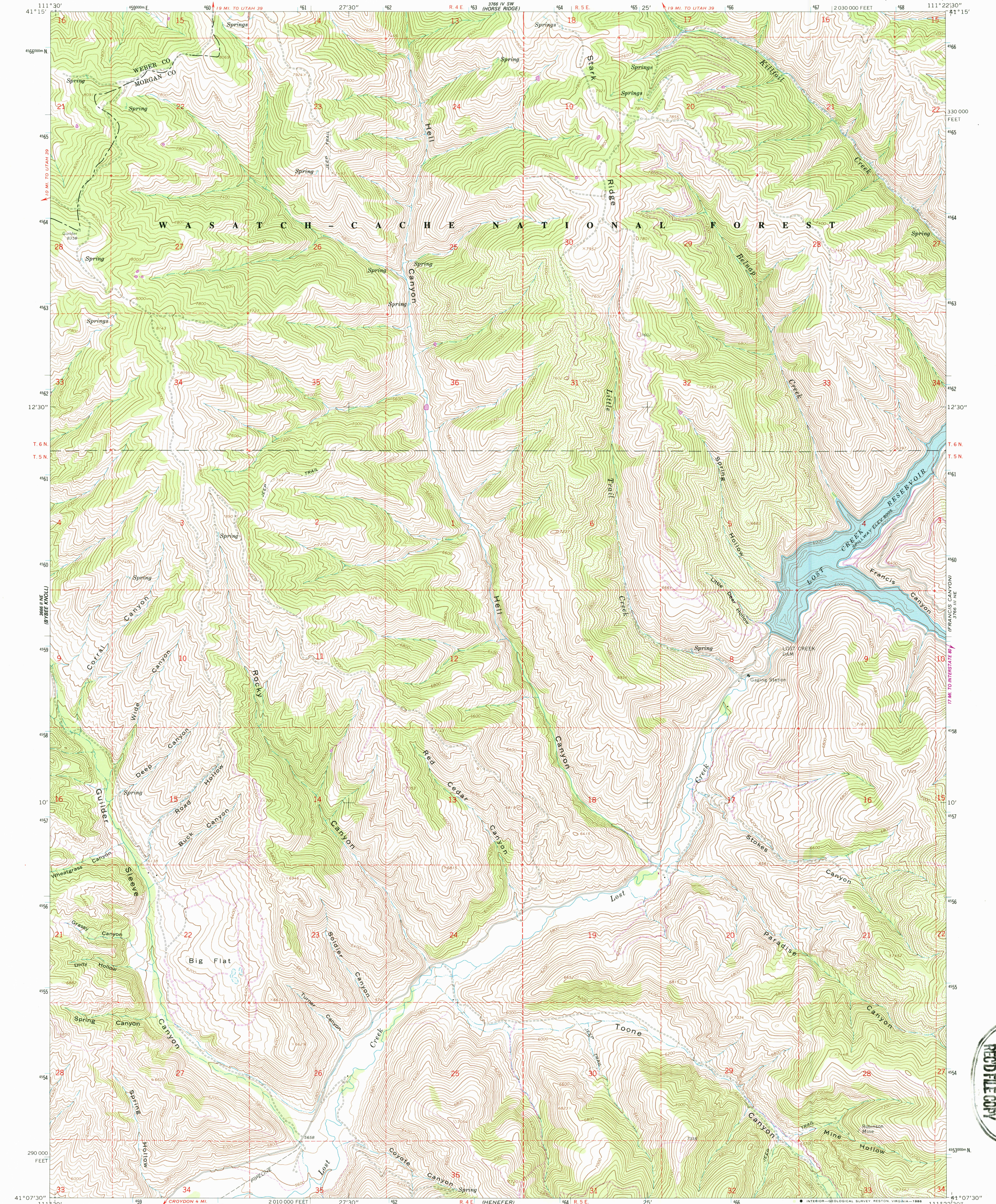


UNITED STATES
DEPARTMENT OF THE INTERIOR
GEOLOGICAL SURVEY

LOST CREEK DAM QUADRANGLE
UTAH
7.5 MINUTE SERIES (TOPOGRAPHIC)



Mapped, edited, and published by the Geological Survey

Control by USGS and NGS/NOAA

Topography by photogrammetric methods from aerial photographs taken 1959. Field checked 1964

Polyconic projection. 1927 North American Datum

10,000-foot grid based on Utah coordinate system, north zone

1000-meter Universal Transverse Mercator grid ticks, zone 12, shown in blue

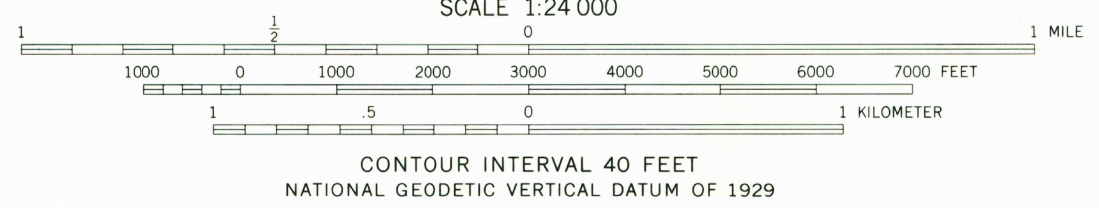
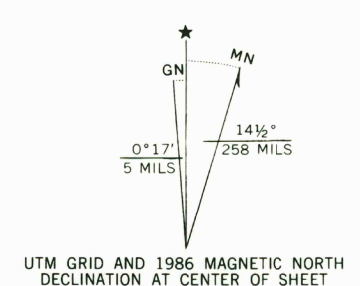
There may be private inholdings within the boundaries of the National or State reservations shown on this map

To place on the predicted North American Datum 1983

move the projection lines 10 meters north and 64 meters east as shown by dashed corner ticks

Revisions shown in purple and woodland compiled from aerial photographs taken 1981 and other source data

This information not field checked. Map edited 1986



ROAD CLASSIFICATION
Light-duty ————— Unimproved dirt —————

LOST CREEK DAM, UTAH
41111-B4-TF-024

1964
PHOTO-REVISED 1986
DMA 3766 III NW-SERIES V897

