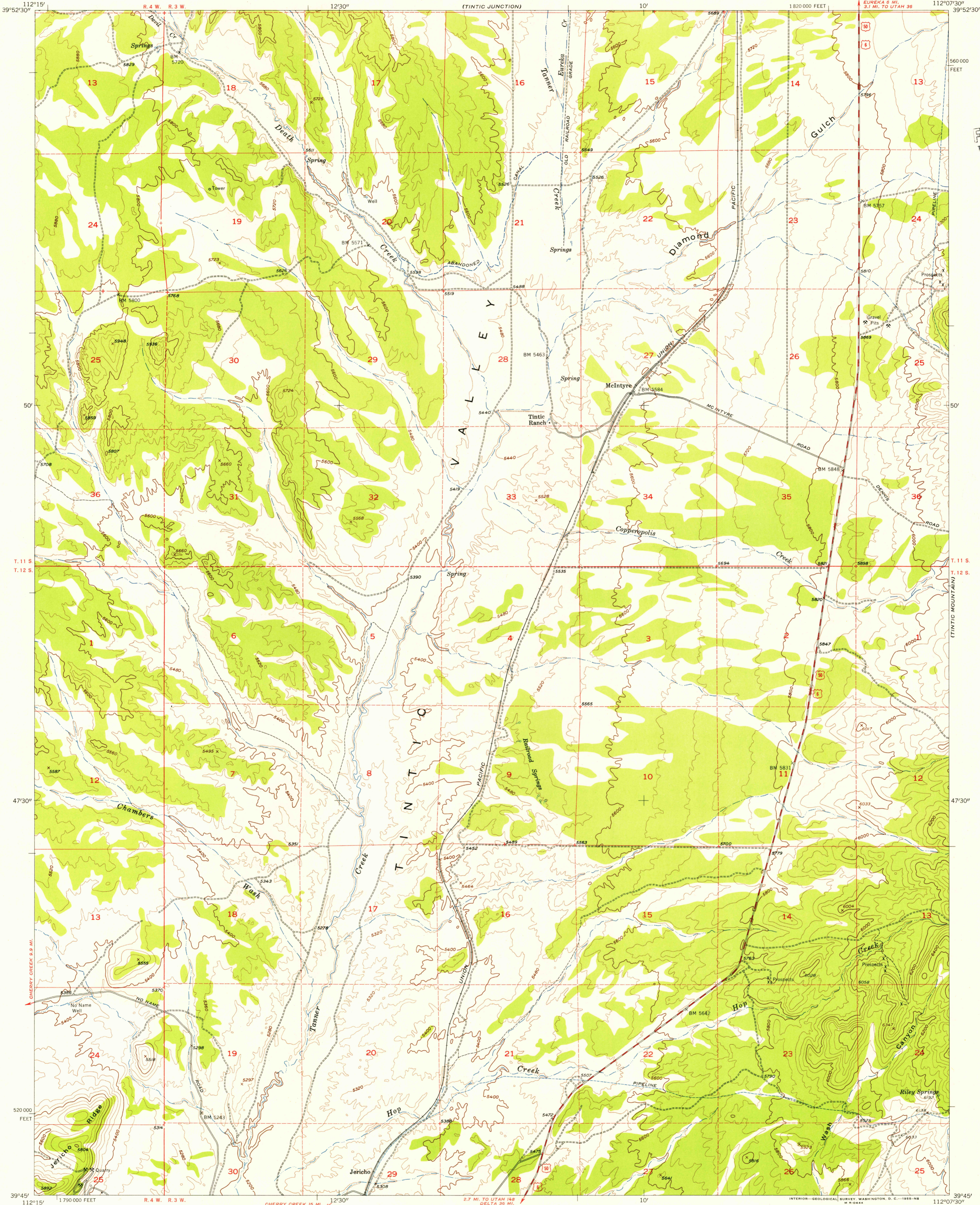
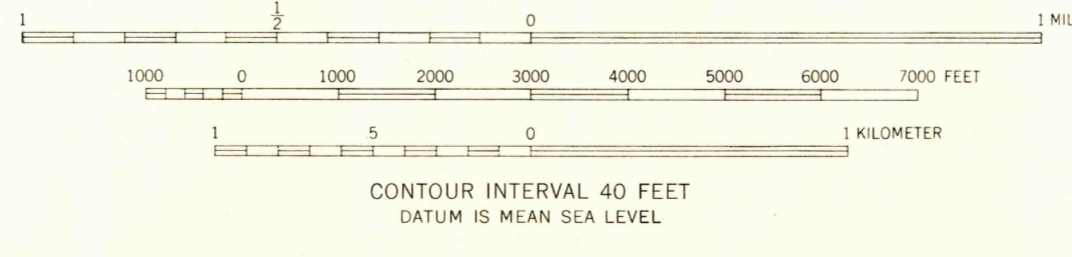
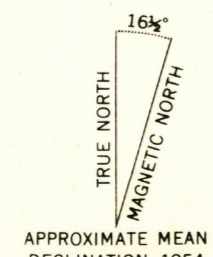


U.S.G.S.
FILE COPY
TOPOGRAPHIC DIVISION



Mapped, edited, and published by the Geological Survey
Control by USGS and USC&GS
Topography from aerial photographs by multiplex methods
Aerial photographs taken 1950. Field check 1954
Polyconic projection. 1927 North American datum
10,000-foot grid based on Utah coordinate system, central zone
Unchecked elevations are shown in brown
Dashed land lines indicate approximate locations



ROAD CLASSIFICATION
Heavy-duty ——— Light-duty ———
Medium-duty ——— Unimproved dirt ———
U.S. Route U.S. Route State Route State Route
USGS Historical File Topographic Division
MC INTYRE, UTAH
N 3945—W 11207.5/7.5
1954

U.S.G.S.
FILE COPY
TOPOGRAPHIC DIVISION