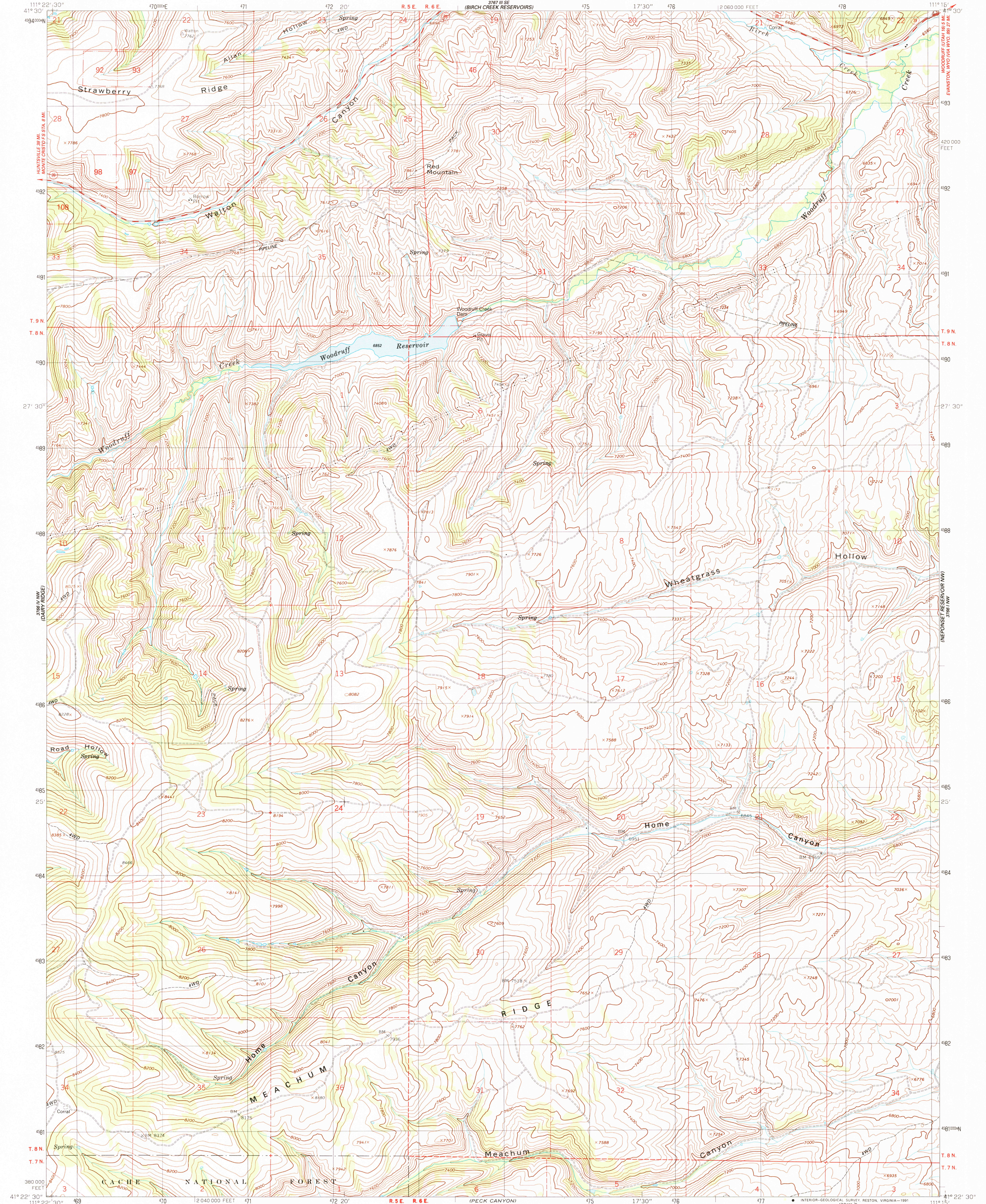


22 30' SW  
CURTIS RIDGE

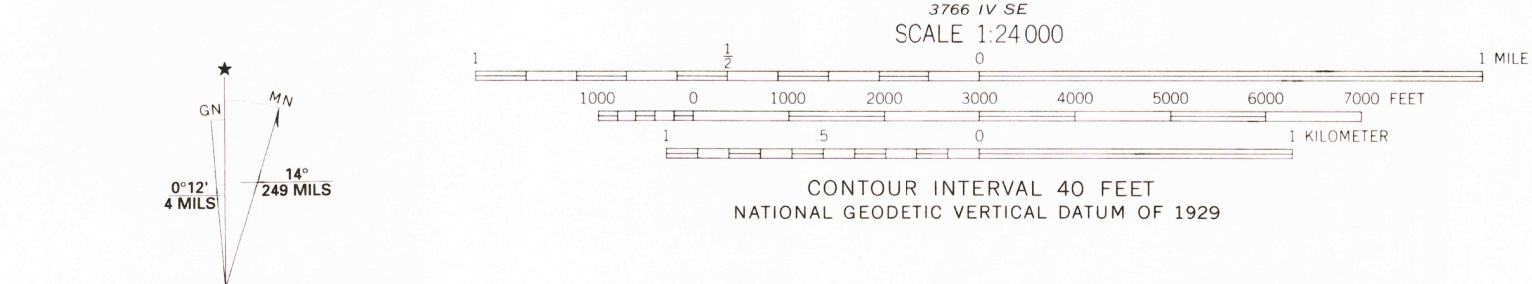
UNITED STATES  
DEPARTMENT OF THE INTERIOR  
GEOLOGICAL SURVEY

MEACHUM RIDGE QUADRANGLE  
UTAH-RICH CO.  
7.5 MINUTE SERIES (TOPOGRAPHIC)

27 30' SW  
WOODRUFF  
EMANSTON, WYO IWA IWO BI 27 30'



Produced by the United States Geological Survey  
Control by USGS and NOS/NOAA  
Compiled from aerial photographs taken 1964. Revised from aerial  
photographs taken 1986. Field checked 1988. Map edited 1991  
North American Datum of 1927 (NAD 27). Projection and  
10 000-foot grid ticks: Utah Coordinate System, north zone  
(Lambert Conformal Conic). 1000-meter Universal Transverse  
Mercator grid, zone 12  
The difference between NAD 27 and North American Datum of  
1983 (NAD 83) for 7.5 minute intersections is given in USGS  
Bulletin 1875. The NAD 83 is shown by dashed corner ticks  
There may be private inholdings within the boundaries of the  
National or State reservations shown on this map  
Fine red dashed lines indicate selected fence lines



ROAD CLASSIFICATION

Primary highway, hard surface	Light-duty road, hard or improved surface
Secondary highway, hard surface	Unimproved road

○ Interstate    ○ U. S. Route    ○ State Route

UTAH  
QUADRANGLE LOCATION

MEACHUM RIDGE, UTAH  
41111-D3-TF-024  
1991  
DMA 3766 IV NE-SERIES V897

REC'D FILE COPY  
SEP 30 1991  
USGS HISTORICAL MAP ARCHIVES