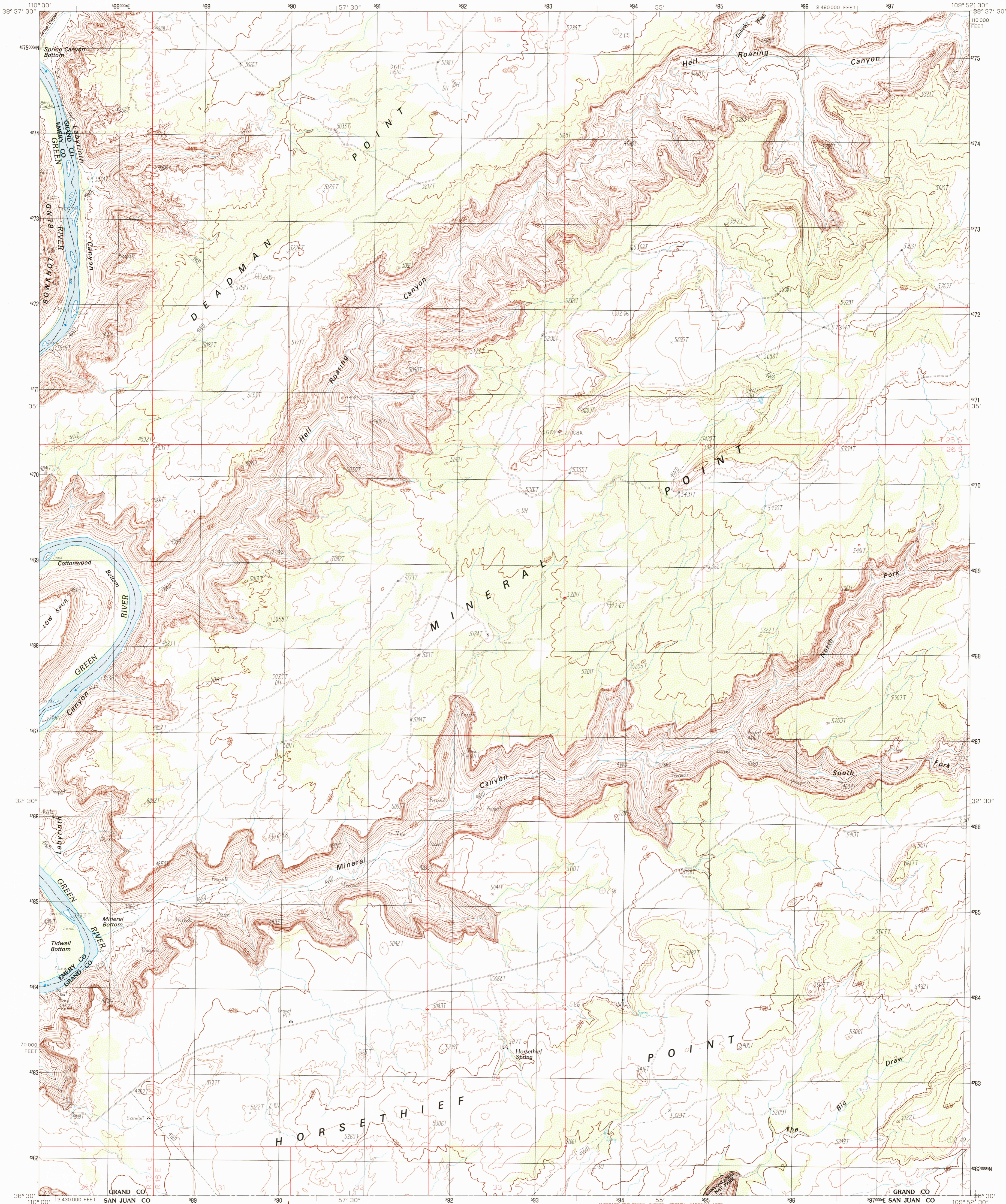


UNITED STATES
DEPARTMENT OF THE INTERIOR
GEOLOGICAL SURVEY

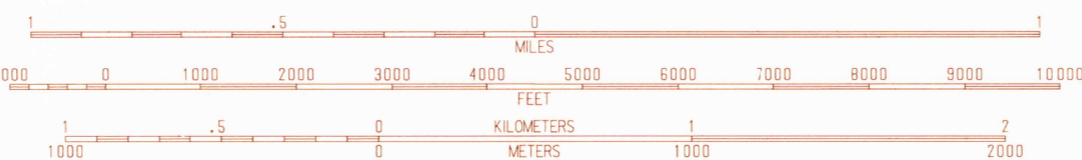
MINERAL CANYON QUADRANGLE
UTAH
7.5 MINUTE SERIES (TOPOGRAPHIC)



PRODUCED BY THE UNITED STATES GEOLOGICAL SURVEY
CONTROL BY USGS, NOS/NOAA
COMPILED FROM AERIAL PHOTOGRAPHS TAKEN 1981
FIELD CHECKED 1983 MAP EDITED 1988
PROJECTION: LAMBERT CONFORMAL CONIC
GRID: 100-METER UNIVERSAL TRANSVERSE MERCATOR ZONE 12
UTAH-FOOT STATE GRID TICKS UTAH, CENTRAL ZONE
UTM GRID DECLINATION 8°40' EAST
1988 MAGNETIC NORTH DECLINATION 1° EAST
VERTICAL DATUM NATIONAL GEODETIC VERTICAL DATUM OF 1929
HORIZONTAL DATUM 1927 NORTH AMERICAN DATUM
To place on the predicted North American Datum of 1983,
move the projection lines as shown by dashed corner ticks
(6 meters north and 61 meters east)
There may be private inholdings within the boundaries of any
Federal and State Reservations shown on this map
Where omitted, land lines have not been established
No distinction made between houses, barns, and other buildings

PROVISIONAL MAP
Produced from original
manuscript drawings. Infor-
mation shown as of date of
photography. 1

SCALE 1:24 000



CONTOUR INTERVAL 40 FEET

To convert feet to meters multiply by .3048
To convert meters to feet multiply by 3.2808

THIS MAP COMPLIES WITH NATIONAL MAP ACCURACY STANDARDS
FOR SALE BY U.S. GEOLOGICAL SURVEY, DENVER, COLORADO 80225
OR RESTON, VIRGINIA 22092

QUADRANGLE LOCATION								
1	2	3	4	5	6	7	8	
1 Tennille Point 2 Delaney Wash 3 Jug Rock 4 Boulnot Bend 5 The Knoll 6 Horseshief Canyon 7 Uphaval Dome 8 Musselman Arch								

ADJOINING 7.5' QUADRANGLE NAMES

ROAD LEGEND

Improved Road
Unimproved Road
Trail
Interstate Route U.S. Route State Route

MINERAL CANYON, UTAH
PROVISIONAL EDITION 1988

38109-E8-TT-024

USGS MAP INFORMATION MAP
MAR 15 1989
REC'D FILE COPY