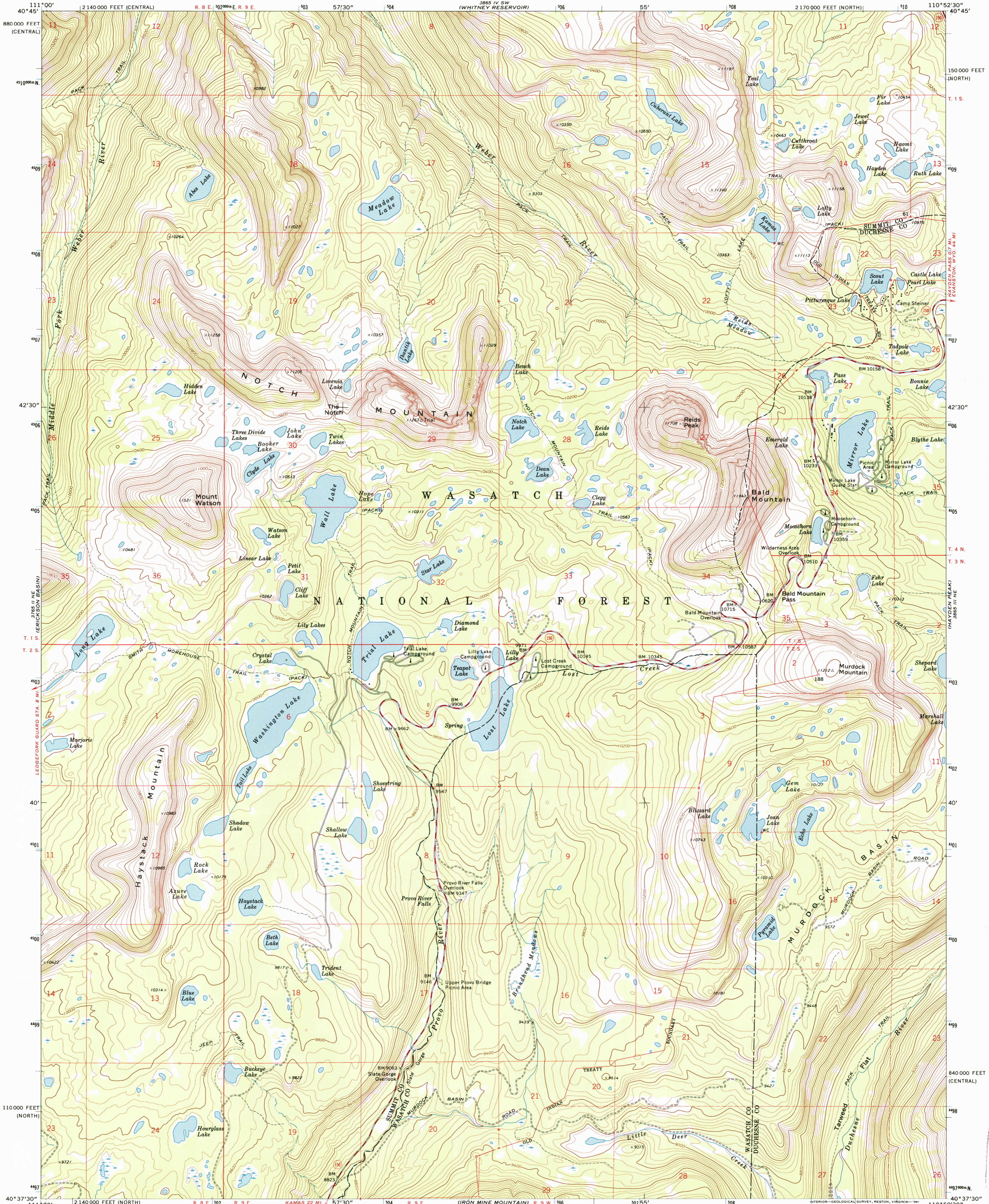
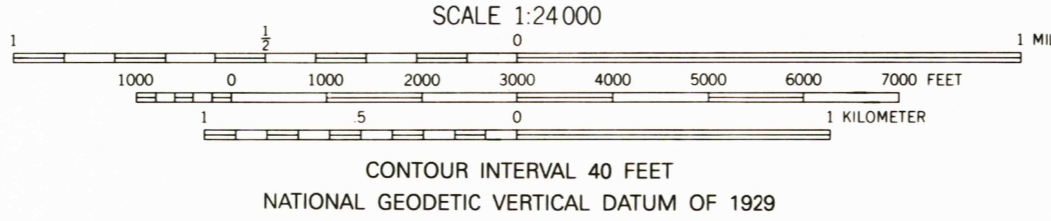
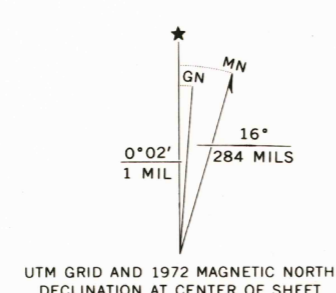


UNITED STATES  
DEPARTMENT OF THE INTERIOR  
GEOLOGICAL SURVEY

MIRROR LAKE QUADRANGLE  
UTAH  
7.5 MINUTE SERIES (TOPOGRAPHIC)



Mapped by the U.S. Forest Service  
Edited and published by the Geological Survey  
Control by USGS, NOS/NOAA and U.S. Forest Service  
Topography by photogrammetric methods from aerial photographs taken 1967. Field checked 1972  
Lambert conformal conic projection. 1927 North American Datum 10,000-foot grid based on Utah coordinate system, north and central zones  
1000-meter Universal Transverse Mercator grid ticks, zone 12, shown in blue  
The difference between 1927 North American Datum and North American Datum of 1983 (NAD 83) for 7.5 minute intersections is given in USGS Bulletin 1875. The NAD 83 is shown by dashed corner ticks  
There may be private inholdings within the boundaries of the National or State reservations shown on this map



ROAD CLASSIFICATION

Primary highway, hard surface	Light-duty road, hard or improved surface
Secondary highway, hard surface	Unimproved road
Interstate Route	U.S. Route
	State Route

THIS MAP COMPLIES WITH MAP ACCURACY STANDARDS FOR SALE BY U.S. GEOLOGICAL SURVEY, P.O. BOX 25286, DENVER, COLORADO 80225 A FOLDER DESCRIBING TOPOGRAPHIC MAPS AND SYMBOLS IS AVAILABLE ON REQUEST

MIRROR LAKE, UTAH  
40110-F8-TF-024  
DMA 3865 III NW-SERIES V897

USGS GEOLOGICAL SURVEY  
MAP ARCHIVES  
BLM 3 1 1998  
REC'D FILE COPY

