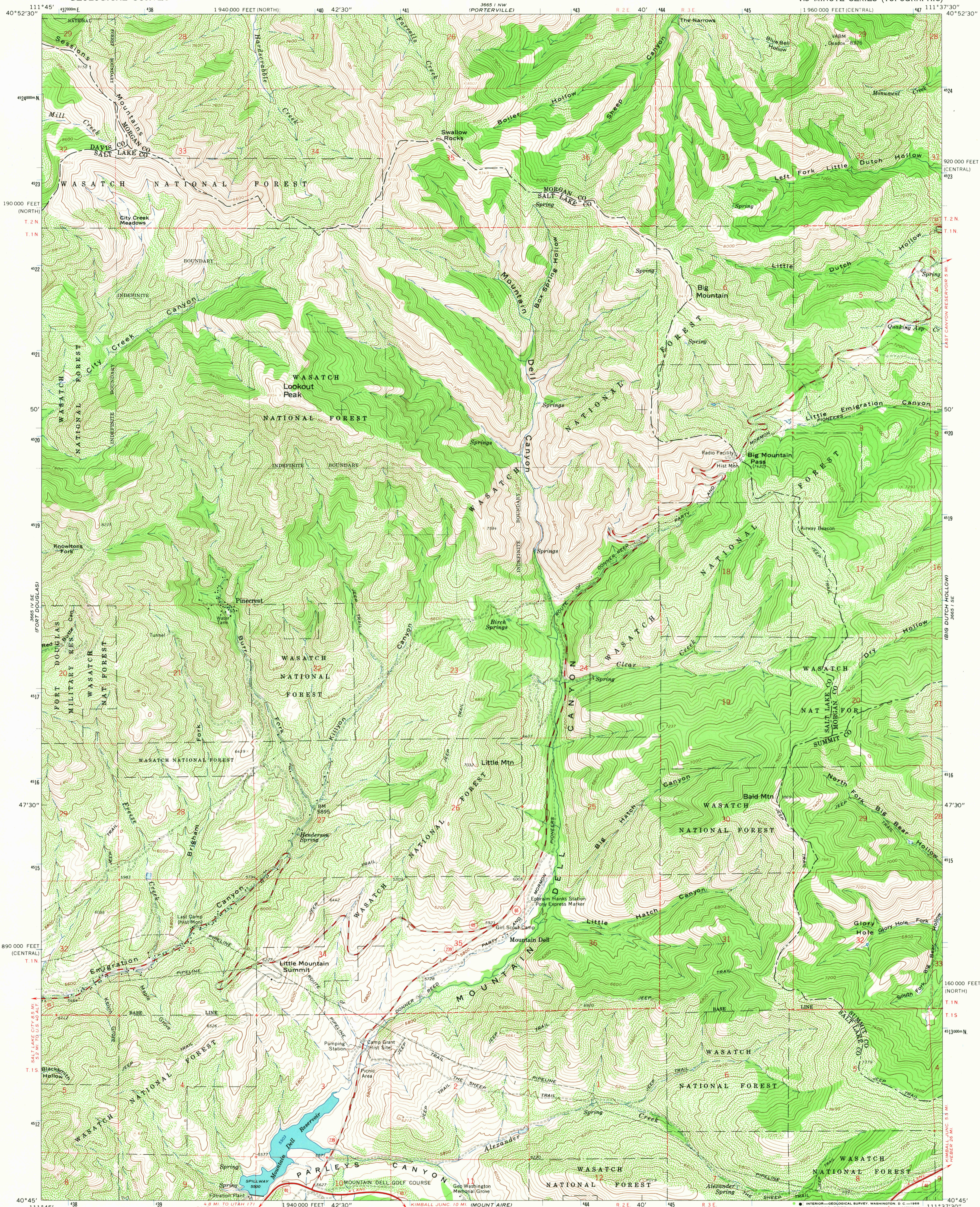
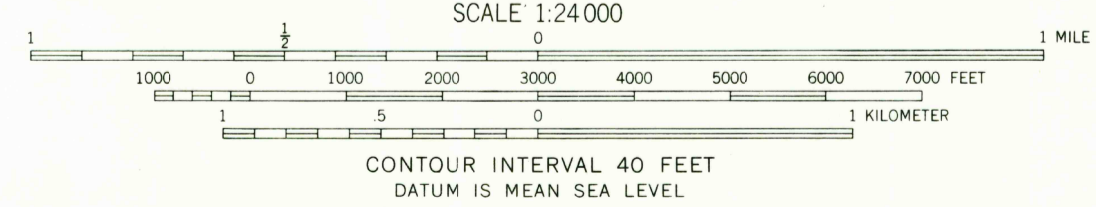
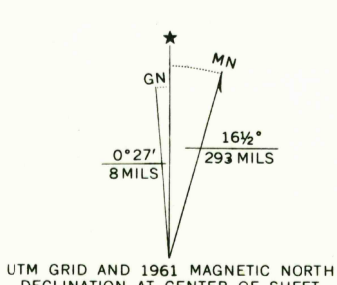


3885 NE  
EAST CANYON  
RESERVOIR



Mapped, edited, and published by the Geological Survey  
Control by USGS and USC&GS  
Topography by photogrammetric methods from aerial  
photographs taken 1957. Field checked 1961  
Polyconic projection. 1927 North American datum  
10,000-foot grids based on Utah coordinate system,  
central and north zones  
1000-meter Universal Transverse Mercator grid ticks,  
zone 12, shown in blue  
Certain land lines are omitted because of insufficient data



CONTOUR INTERVAL 40 FEET  
DATUM IS MEAN SEA LEVEL

ROAD CLASSIFICATION

Heavy-duty	Light-duty
Medium-duty	Unimproved dirt
U.S. Route	State Route



U.S.G.S.  
FILE COPY  
TOPOGRAPHIC DIVISION

MOUNTAIN DELL, UTAH  
N4045-W11137.5/7.5  
1961  
AMS 3665 I SW—SERIES V897

6015  
JUN 25 1968

THIS MAP COMPLIES WITH NATIONAL MAP ACCURACY STANDARDS  
FOR SALE BY U.S. GEOLOGICAL SURVEY, DENVER, COLORADO 80225 OR WASHINGTON, D.C. 20242  
A FOLDER DESCRIBING TOPOGRAPHIC MAPS AND SYMBOLS IS AVAILABLE ON REQUEST