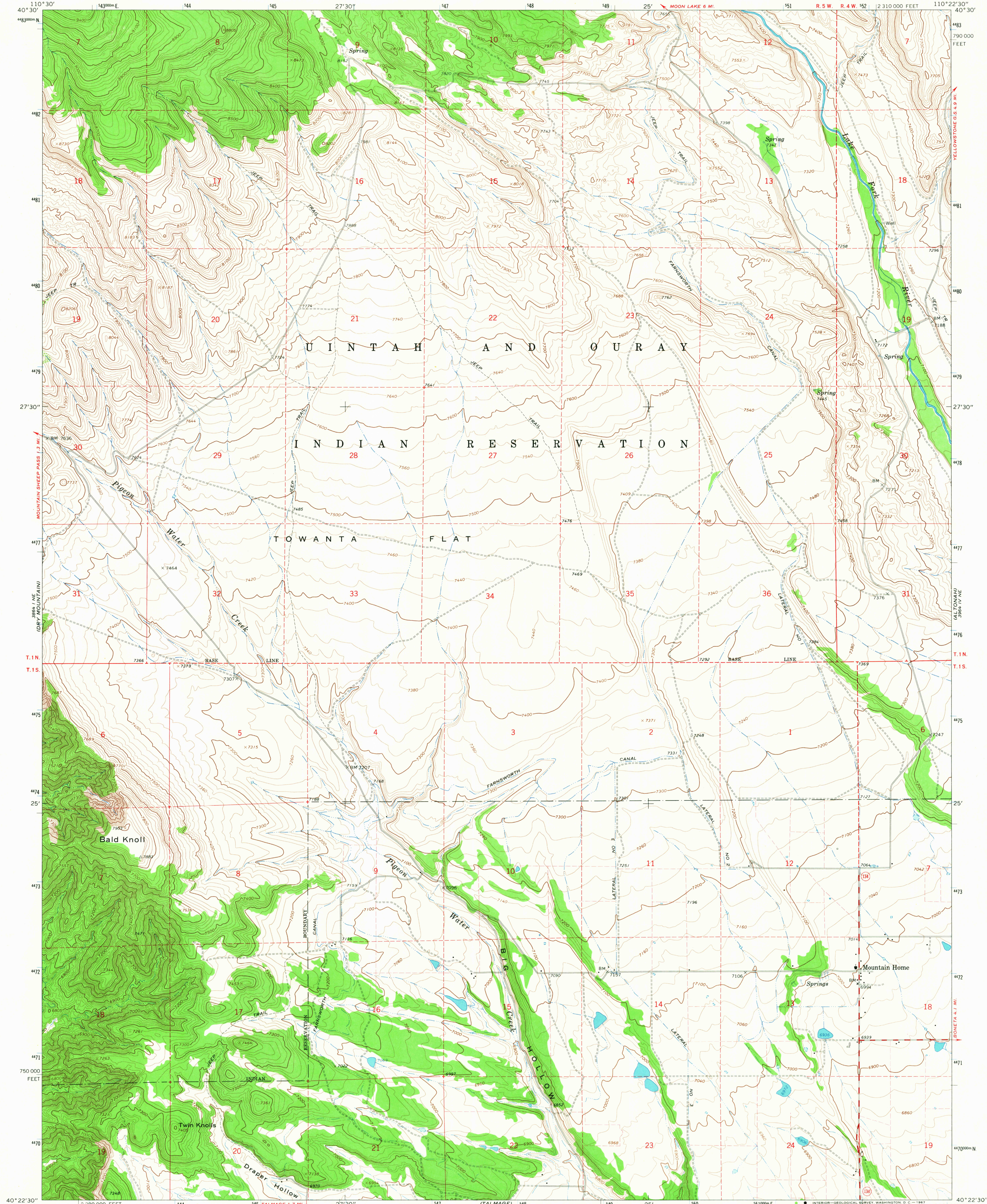
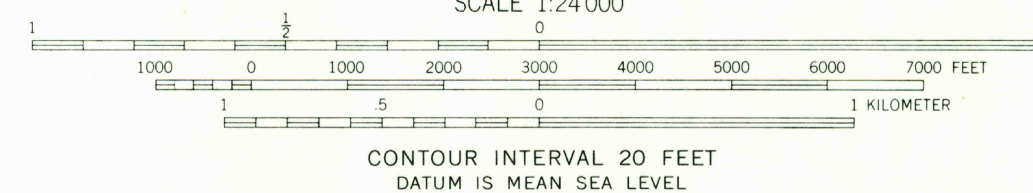


3965 1/4 S
3965 1/2 S
3965 3/4 S
3966 1/4 N
(BURNING MILL SPRING)



Mapped, edited, and published by the Geological Survey
Control by USGS and USC&GS
Topography by photogrammetric methods from aerial
photographs taken 1962. Field checked 1965
Polyconic projection. 1927 North American datum
10,000-foot grid based on Utah coordinate system,
central zone
1000-meter Universal Transverse Mercator grid ticks,
zone 12, shown in blue
Fine red dashed lines indicate selected fence lines



ROAD CLASSIFICATION
Medium-duty — Light-duty
Unimproved dirt
State Route

JUN 5 1967

THIS MAP COMPLIES WITH NATIONAL MAP ACCURACY STANDARDS
FOR SALE BY U.S. GEOLOGICAL SURVEY, DENVER, COLORADO 80225, OR WASHINGTON, D. C. 20242
A FOLDER DESCRIBING TOPOGRAPHIC MAPS AND SYMBOLS IS AVAILABLE ON REQUEST

U.S.G.S. TOPOGRAPHIC DIVISION
MOUNTAIN HOME, UTAH
N4022.5—W11022.5/7.5
1965
AMS 3964 IV NW—SERIES V987