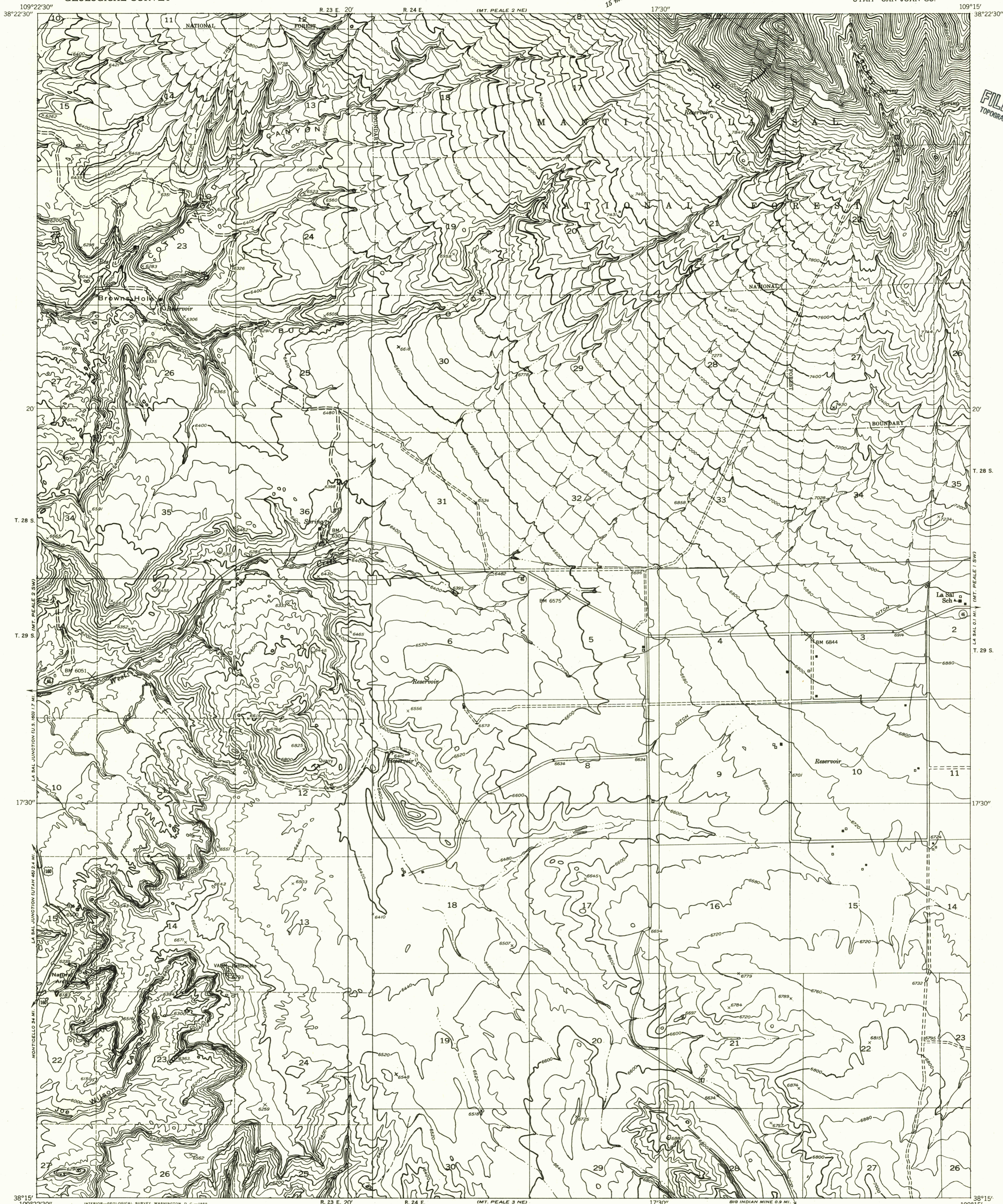


DEPARTMENT OF THE INTERIOR
GEOLOGICAL SURVEY

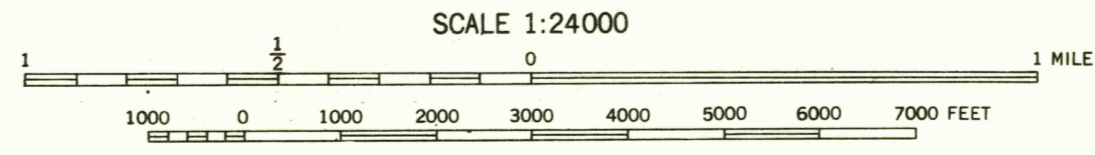
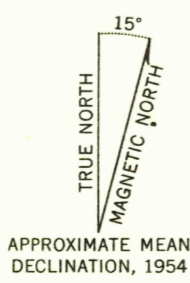
Preliminary edition
Pending completion of 1:62,500 scale
15 minute maps covering this area

MT. PEALE 2 SE QUADRANGLE
UTAH—SAN JUAN CO.



U.S.G.S.
FILE COPY
TOPOGRAPHIC DIVISION

Mapped by the Geological Survey 1954
Topography by multiplex methods from
aerial photographs taken 1953
Dashed land lines indicate approximate locations
Symbols and other detail herein
drawn for 1:62,500 scale publication



CONTOUR INTERVAL 40 FEET
DATUM IS MEAN SEA LEVEL

ROAD CLASSIFICATION
Improved ——— Unimproved - - - - -

U.S.G.S.
FILE COPY
TOPOGRAPHIC DIVISION
MT. PEALE 2 SE, UTAH
N3815—W10915/7.5

NOV 4 1955