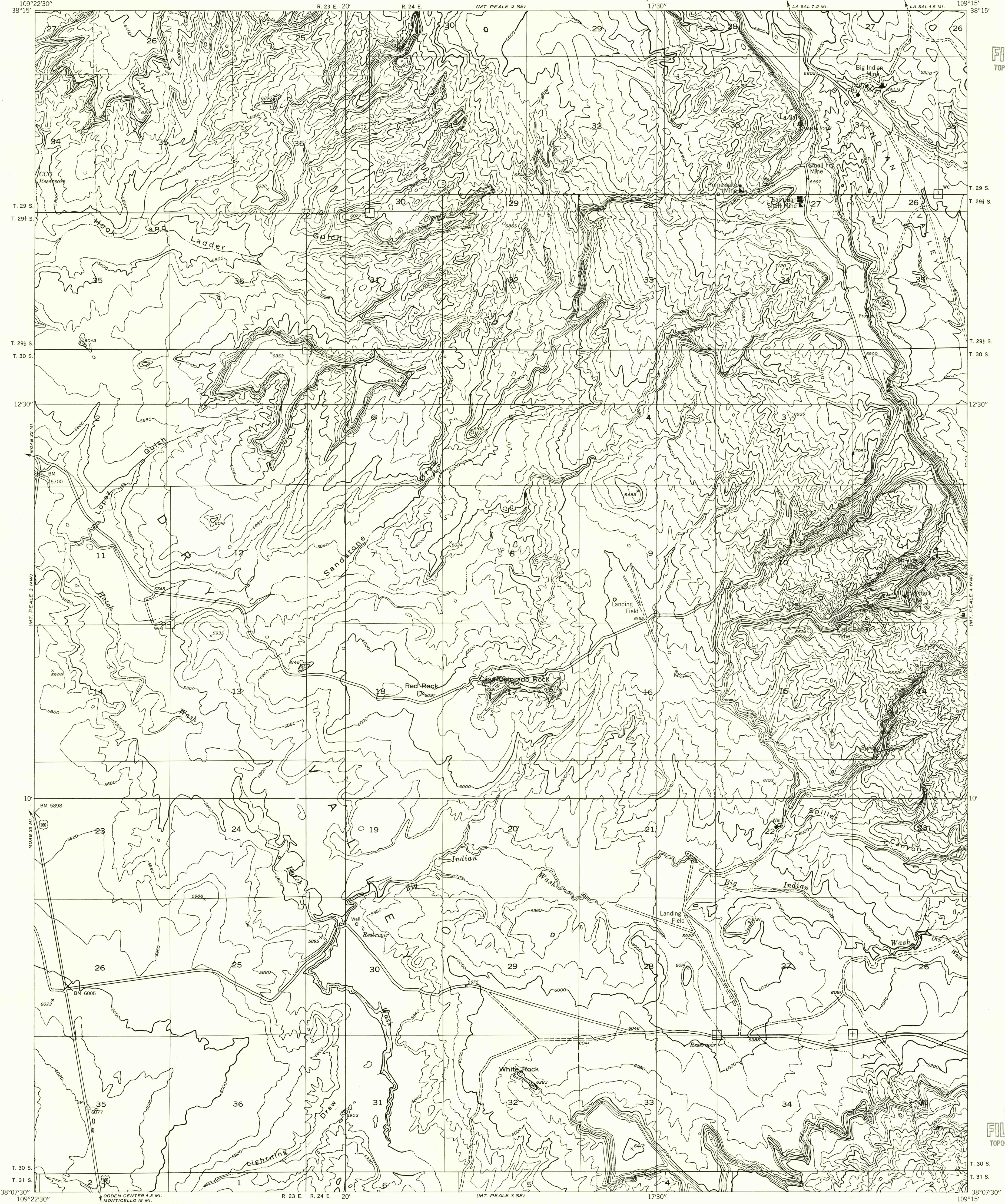


Preliminary edition
Pending completion of 1:62,500 scale
15 minute maps covering this area

U.S.G.S.
FILE COPY
TOPOGRAPHIC DIVISION

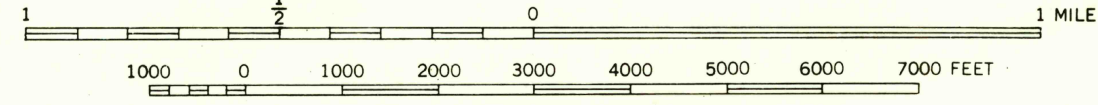
U.S.G.S.
FILE COPY
TOPOGRAPHIC DIVISION



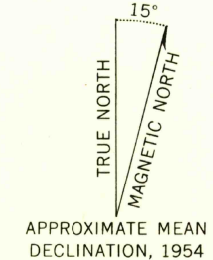
Map by the Geological Survey 1954
Topography by multiplex methods from
aerial photographs taken 1953
Dashed land lines indicate approximate location

INTERIOR—GEOLOGICAL SURVEY, WASHINGTON, D. C.—1955

SCALE 1:24000



ROAD CLASSIFICATION
Improved ——— Unimproved - - - - -



CONTOUR INTERVAL 40 FEET
DATUM IS MEAN SEA LEVEL

MT. PEALE 3 NE, UTAH
N3807.5—W10915/7.5

OCT 21 1955