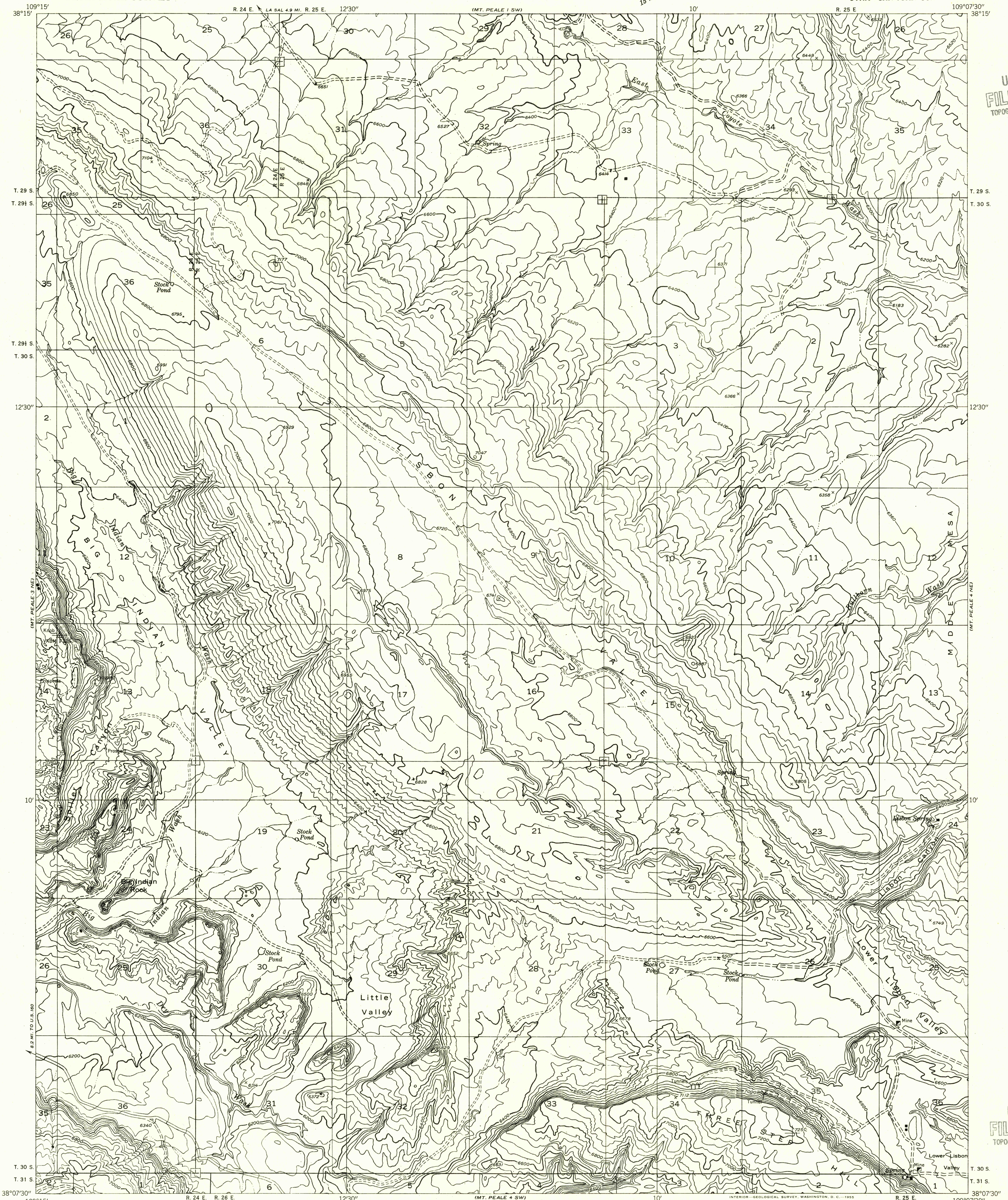


DEPARTMENT OF THE INTERIOR
GEOLOGICAL SURVEY

Preliminary edition
Pending completion of 1:62,500 scale
15 minute maps covering this area

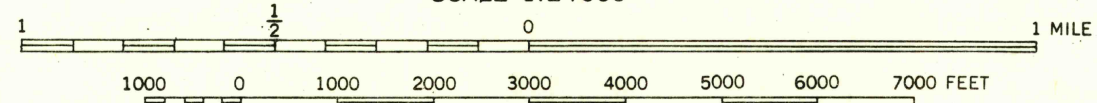
MT. PEALE 4 NW QUADRANGLE
UTAH—SAN JUAN CO.

U.S.G.S.
FILE COPY
TOPOGRAPHIC DIVISION

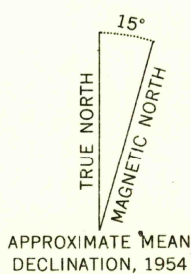


Mapped by the Geological Survey 1954
Topography by multiplex methods from
aerial photographs taken 1953

SCALE 1:24000



ROAD CLASSIFICATION
Improved ——— Unimproved - - - - -



CONTOUR INTERVAL 40 FEET
DATUM IS MEAN SEA LEVEL

MT. PEALE 4 NW, UTAH
N3807.5—W10907.5/7.5

OCT 5 1955

2050