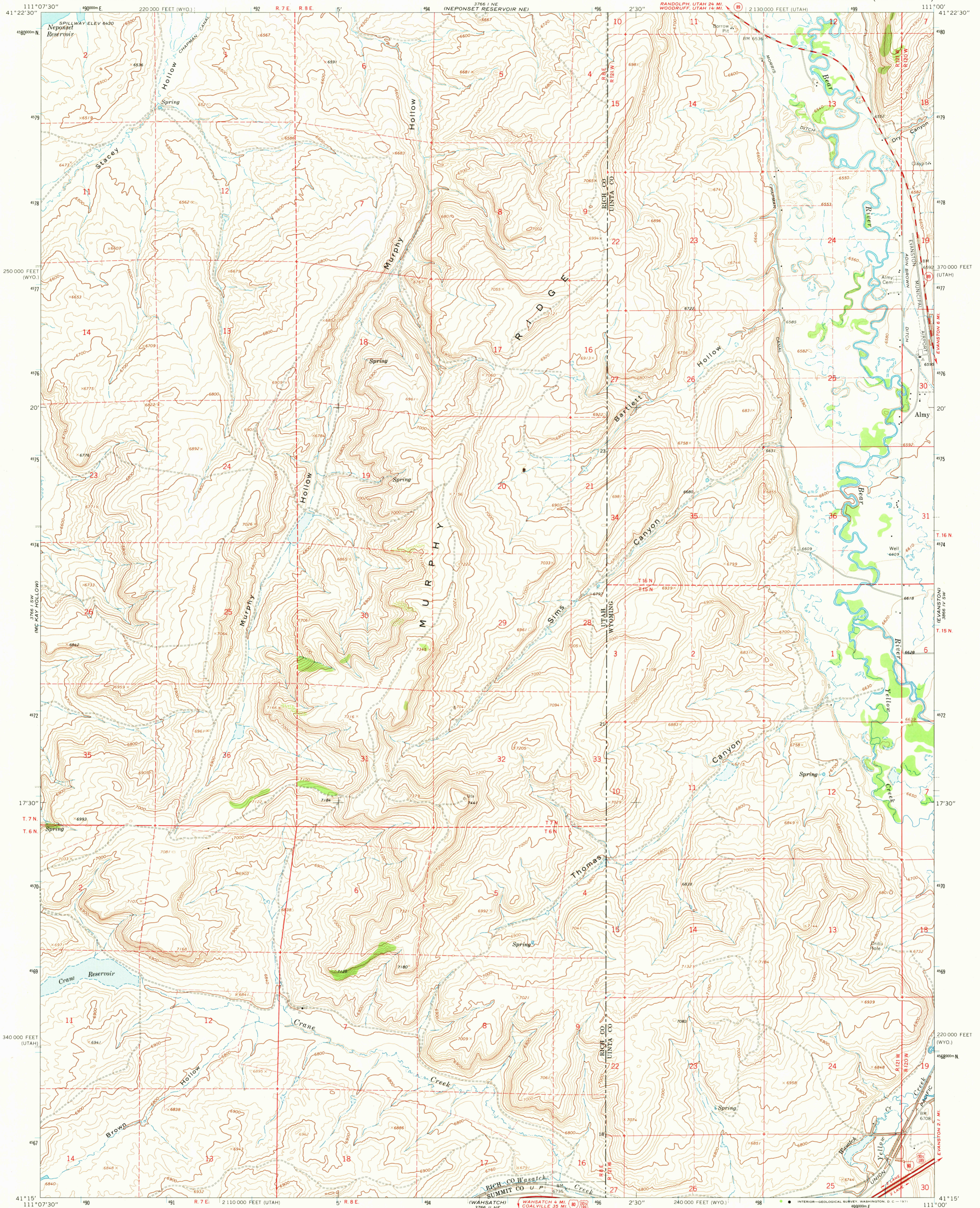
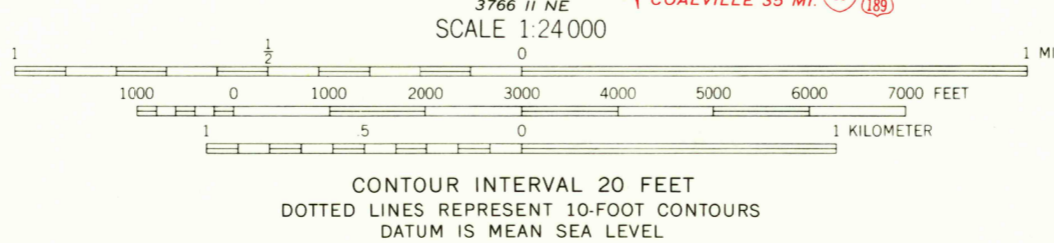
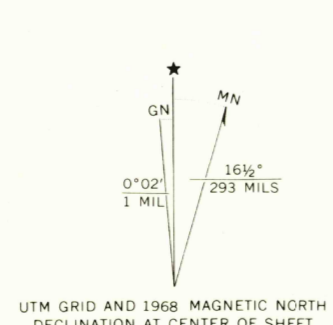


UNITED STATES
DEPARTMENT OF THE INTERIOR
GEOLOGICAL SURVEY

MURPHY RIDGE QUADRANGLE
UTAH - WYOMING
7.5 MINUTE SERIES (TOPOGRAPHIC)



Mapped, edited, and published by the Geological Survey
Control by USGS and USC&GS
Topography by photogrammetric methods from aerial photographs taken 1964-65. Field checked 1968.
Polyconic projection. 1927 North American datum
10,000-foot grids based on Utah coordinate system, north zone, and Wyoming coordinate system, west zone
1000-meter Universal Transverse Mercator grid ticks, zone 12, shown in blue
Fine red dashed lines indicate selected fence lines



ROAD CLASSIFICATION

- Primary highway, all weather, hard surface
- Secondary highway, all weather, hard surface
- Interior-Geological Survey Washington, D.C. - 1971
- Light-duty road, all weather, improved surface
- Unimproved road, fair or dry weather

ROUTE MARKERS

- Interstate Route
- U.S. Route
- State Route

UTAH
QUADRANGLE LOCATION

MURPHY RIDGE, UTAH - WYO.
N4115-W11100/7.5

THIS MAP COMPLIES WITH NATIONAL MAP ACCURACY STANDARDS
FOR SALE BY U.S. GEOLOGICAL SURVEY, DENVER, COLORADO 80225, OR WASHINGTON, D.C. 20242
A FOLDER DESCRIBING TOPOGRAPHIC MAPS AND SYMBOLS IS AVAILABLE ON REQUEST