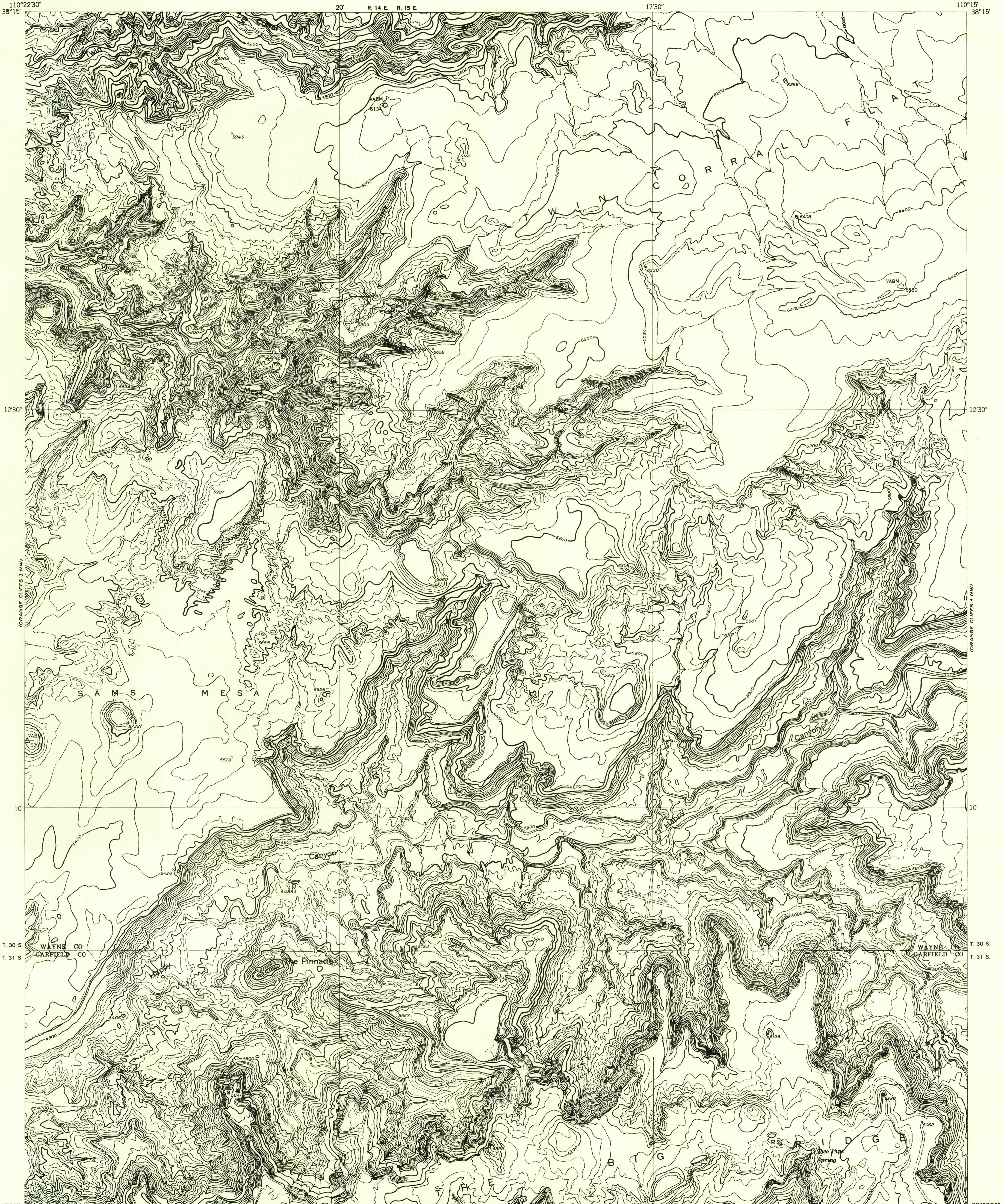
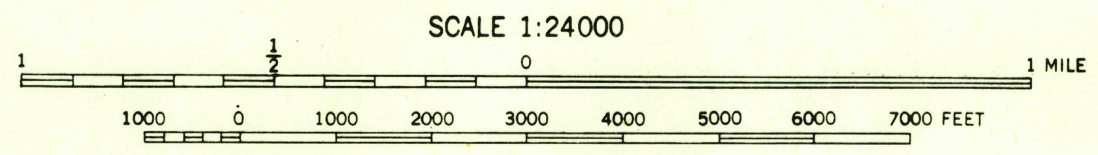
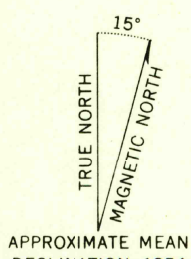


Preliminary edition
Pending completion of 1:62,500 scale
15 minute maps covering this area



110°22'30"
38°15'
Mapped by the Geological Survey 1953
Topography by multiplex methods from
aerial photographs taken 1951-2



SCALE 1:24000
CONTOUR INTERVAL 40 FEET
DATUM IS MEAN SEA LEVEL

ROAD CLASSIFICATION
Improved ——— Unimproved - - - - -

ORANGE CLIFFS 3 NE, UTAH
N3807.5-W11015.7.5