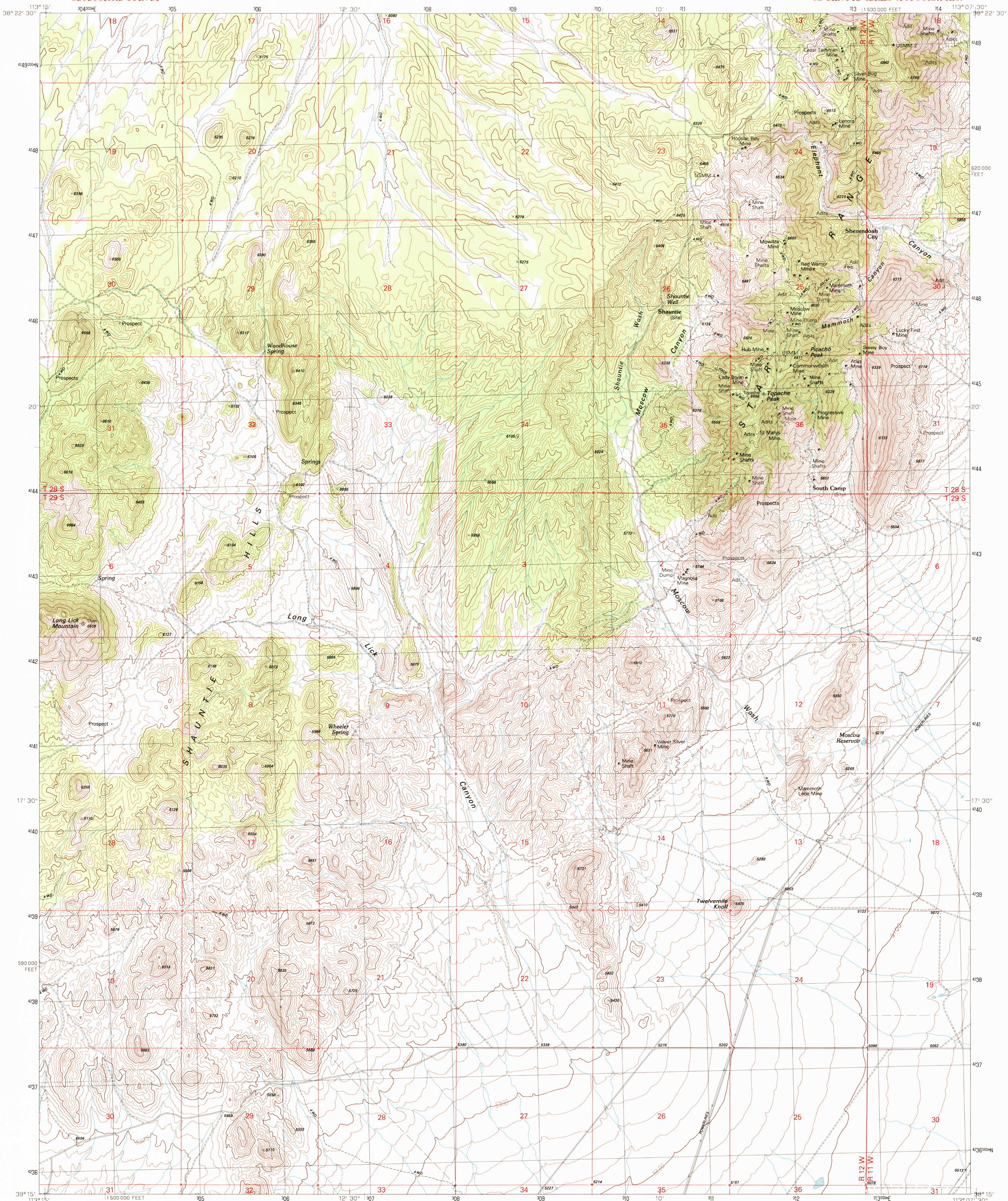


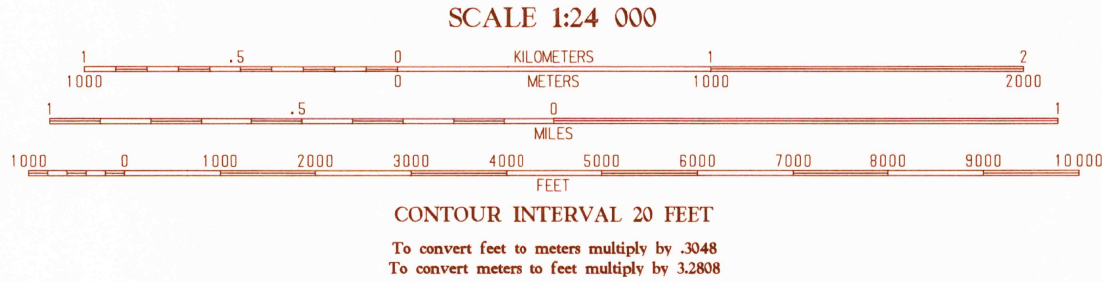
UNITED STATES  
DEPARTMENT OF THE INTERIOR  
GEOLOGICAL SURVEY

PICACHO PEAK QUADRANGLE  
UTAH-BEAVER CO.  
7.5 MINUTE SERIES (TOPOGRAPHIC)

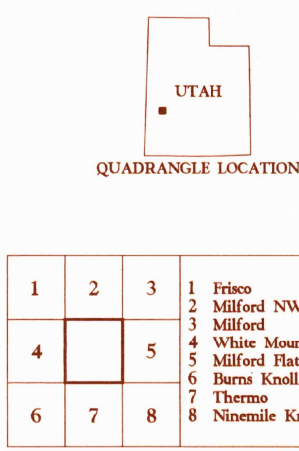


PRODUCED BY THE UNITED STATES GEOLOGICAL SURVEY  
CONTROL BY THE UNITED STATES GEOLOGICAL SURVEY  
COMPILED FROM AERIAL PHOTOGRAPHS TAKEN . . . . . 1951-1955  
FIELD CHECKED . . . . . 1955  
LIMITED REVISION FROM AERIAL PHOTOGRAPHS TAKEN . . . . . 1984  
FIELD CHECKED . . . . . 1986  
MAP EDITED . . . . . 1989  
PROJECTION . . . . . LAMBERT CONFORMAL CONIC  
GRID: 1000-METER UNIVERSAL TRANSVERSE MERCATOR . . . . . ZONE 12  
6300-FOOT STATE GRID TICKS . . . . . UTAH, SOUTH ZONE  
UTM GRID DECLINATION . . . . . 172° WEST  
1989 MAGNETIC NORTH DECLINATION . . . . . 14° EAST  
VERTICAL DATUM . . . . . NATIONAL GEODETIC VERTICAL DATUM OF 1929  
HORIZONTAL DATUM . . . . . 1927 NORTH AMERICAN DATUM  
To place on the predicted North American Datum of 1983,  
move the projection lines as shown by dashed corner ticks  
(7 meters north and 69 meters east)  
There may be private inholdings within the boundaries of any  
Federal and State Reservations shown on this map  
Public Land Survey System is shown as published in 1958 and verified  
or supplemented in 1986.

PROVISIONAL MAP  
Produced from original  
manuscript drawings. Infor-  
mation shown as of date of  
field check.



THIS MAP COMPLIES WITH NATIONAL MAP ACCURACY STANDARDS  
FOR SALE BY U.S. GEOLOGICAL SURVEY, DENVER, COLORADO 80225  
OR RESTON, VIRGINIA 22092



ROAD LEGEND  
Improved Road . . . . .  
Unimproved Road . . . . .  
Trail . . . . .  
Interstate Route . . . . .  
U.S. Route . . . . .  
State Route . . . . .

1	2	3
4	5	6
7	8	9

PICACHO PEAK, UTAH  
PROVISIONAL EDITION 1989

38113-C2-TT-024

