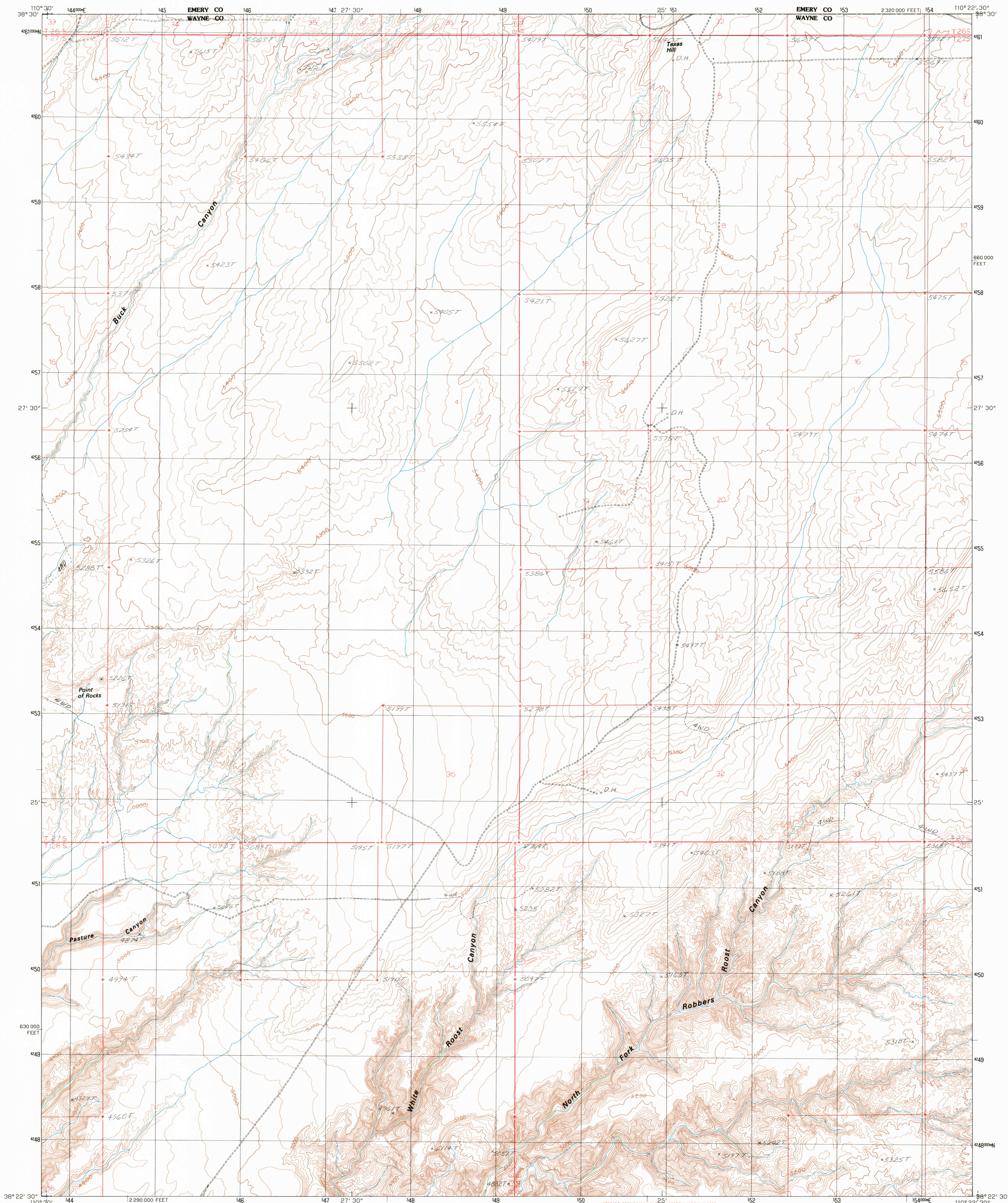


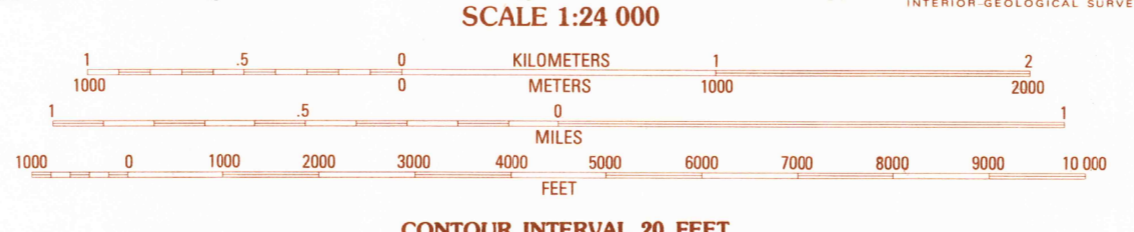
UNITED STATES
DEPARTMENT OF THE INTERIOR
GEOLOGICAL SURVEY

POINT OF ROCKS EAST QUADRANGLE
UTAH
7.5 MINUTE SERIES (TOPOGRAPHIC)



PRODUCED BY THE UNITED STATES GEOLOGICAL SURVEY
CONTROL BY USGS, NOS/NOAA
COMPILED FROM AERIAL PHOTOGRAPHS TAKEN 1957
PLANETABLE SURVEYS 1963
LIMITED REVISION FROM AERIAL PHOTOGRAPHS TAKEN 1981
FIELD CHECKED 1984. MAP EDITED 1986
PROJECTION LAMBERT CONFORMAL CONIC
GRID: 1000-METER UNIVERSAL TRANSVERSE MERCATOR ZONE 12
10,000-FOOT STATE GRID TICKS UTAH, SOUTH ZONE
UTM GRID DECLINATION 021° EAST
1986 MAGNETIC NORTH DECLINATION 13°30' EAST
VERTICAL DATUM NATIONAL GEODETIC VERTICAL DATUM OF 1929
HORIZONTAL DATUM 1927 NORTH AMERICAN DATUM
To place on the predicted North American Datum of 1983,
move the projection lines as shown by dashed corner ticks
(6 meters north and 62 meters east)
There may be private inholdings within the boundaries of any
Federal and State Reservations shown on this map
Public Land Survey System is shown as published in 1963 and
verified or supplemented in 1984. Where omitted, PLSS has not
been established

PROVISIONAL MAP
Produced from original
manuscript drawings. Infor-
mation shown as of date of
field check.



THIS MAP COMPLIES WITH NATIONAL MAP ACCURACY STANDARDS
FOR SALE BY U.S. GEOLOGICAL SURVEY, DENVER, COLORADO 80225
OR RESTON, VIRGINIA 22092

1	2	3
4	5	6
7	8	9

QUADRANGLE LOCATION

ADJOINING 7.5' QUADRANGLE NAMES

1 Gilson Butte
2 The Flat Tops
3 Jacks Knob
4 Point of Rocks West
5 Shaback Knoll
6 Angel Cove
7 Angel Point
8 Robbers Roost Plate

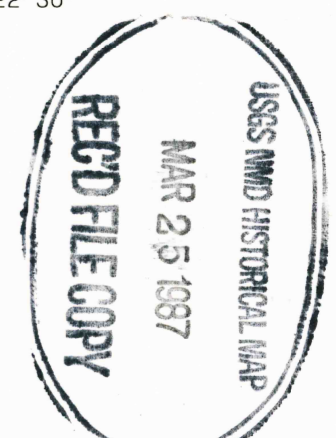
ROAD LEGEND

Improved Road
Unimproved Road
Trail

Interstate Route U.S. Route State Route

POINT OF ROCKS EAST, UTAH
PROVISIONAL EDITION 1986

38110-D4-TF-024



USGS NMN HISTORICAL MAP