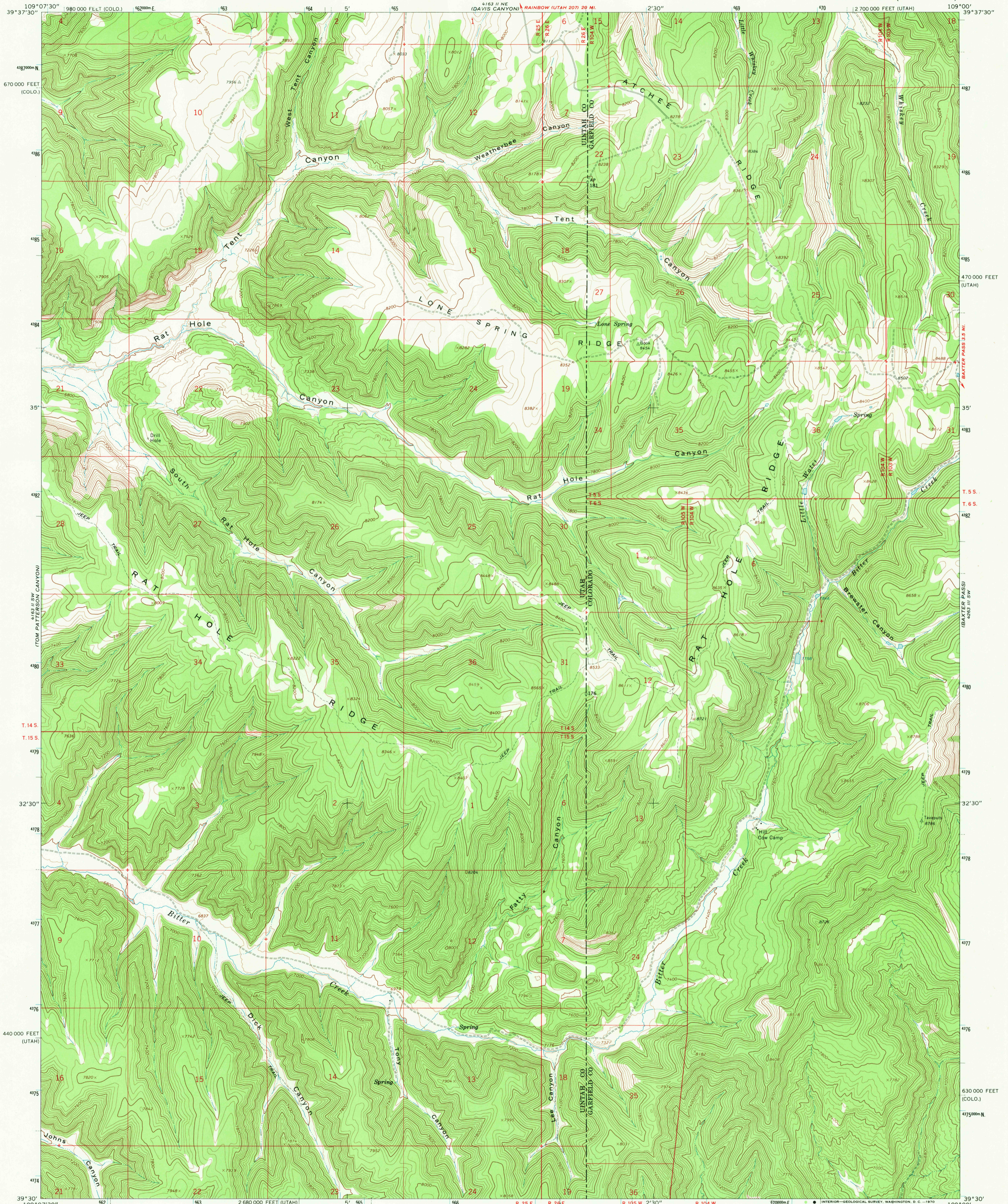


UNITED STATES
DEPARTMENT OF THE INTERIOR
GEOLOGICAL SURVEY

RAT HOLE RIDGE QUADRANGLE
UTAH-COLORADO
7.5 MINUTE SERIES (TOPOGRAPHIC)



Mapped, edited, and published by the Geological Survey

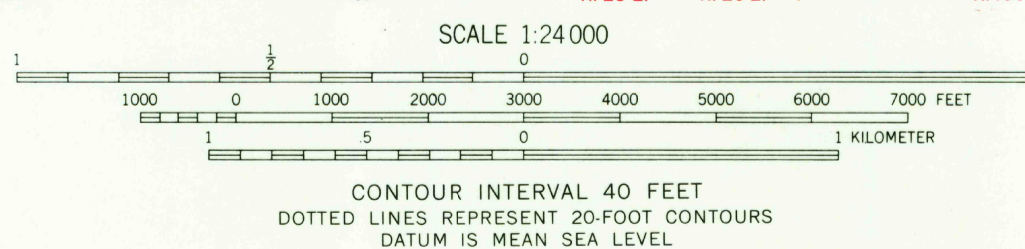
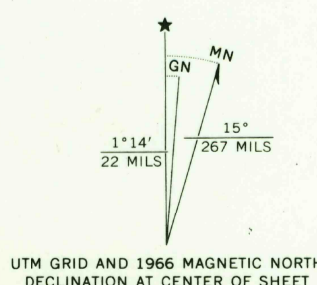
Control by USGS and USC&GS

Topography by photogrammetric methods from aerial photographs taken 1965. Field checked 1966

Polyconic projection. 1927 North American datum 10,000-foot grids based on Utah coordinate system, central zone and Colorado coordinate system, central zone 1000-meter Universal Transverse Mercator grid ticks, zone 12, shown in blue

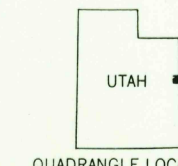
Fine red dashed lines indicate selected fence lines

Certain land lines are omitted because of insufficient data



USGS
Historical File
Topographic Division

ROAD CLASSIFICATION
Light-duty _____ Unimproved dirt _____



THIS MAP COMPLIES WITH NATIONAL MAP ACCURACY STANDARDS
FOR SALE BY U. S. GEOLOGICAL SURVEY, DENVER, COLORADO 80225, OR WASHINGTON, D. C. 20242
A FOLDER DESCRIBING TOPOGRAPHIC MAPS AND SYMBOLS IS AVAILABLE ON REQUEST

U.S.G.S. RAT HOLE RIDGE, UTAH-COLO.
N3930-W10900/7.5

FILE COPY
TOPOGRAPHIC DIVISION

1966
AMS 4163 II SE-SERIES V987

2725
JAN 12 1971