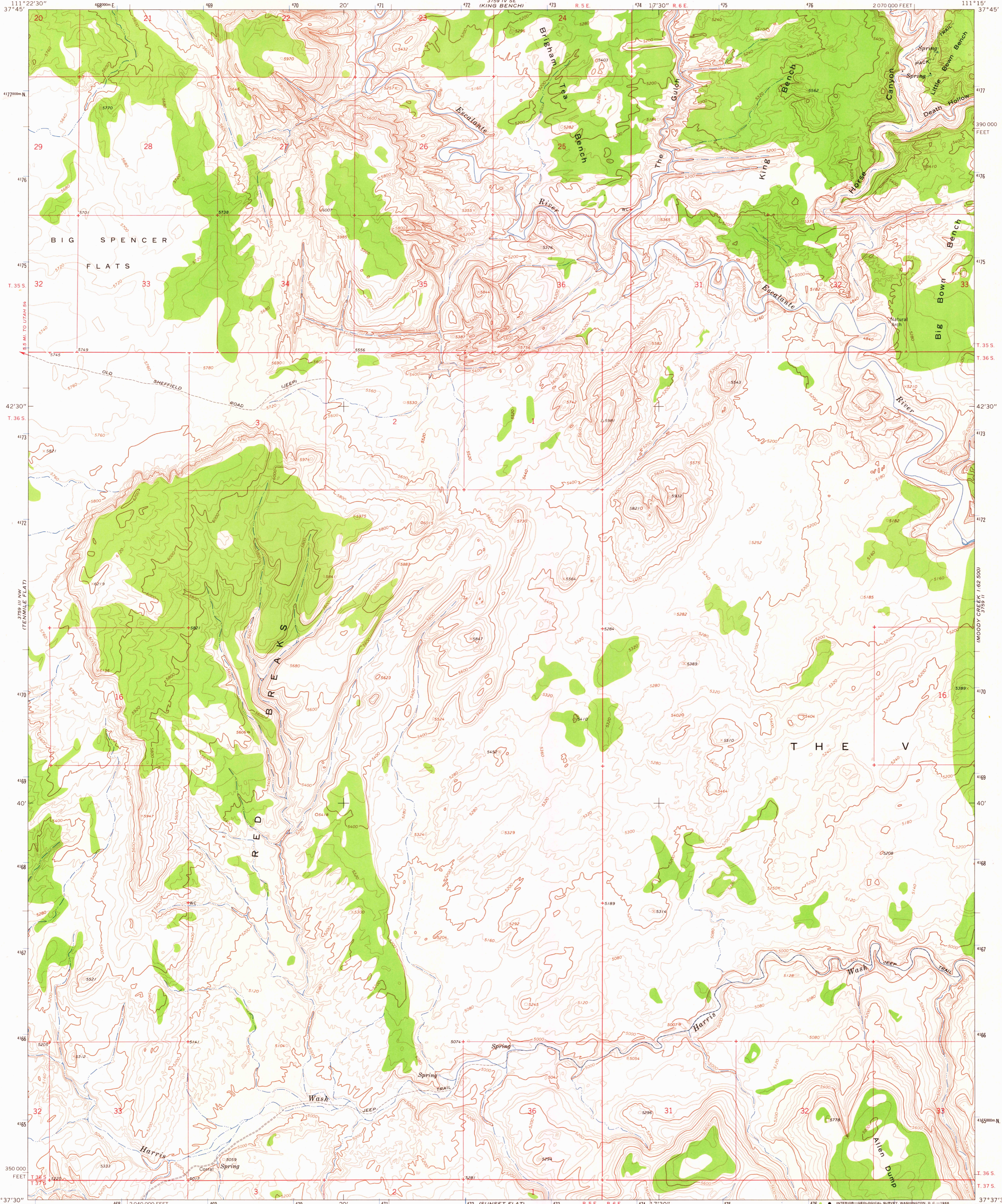


37°45' N
111°22'30" W
CAMP CREEK

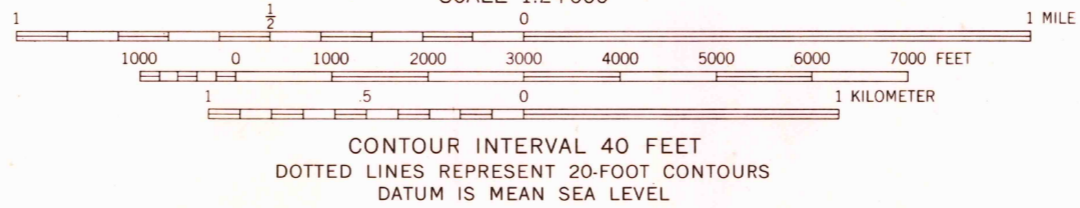
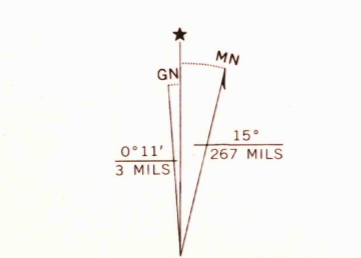
UNITED STATES
DEPARTMENT OF THE INTERIOR
GEOLOGICAL SURVEY

RED BREAKS QUADRANGLE
UTAH—GARFIELD CO.
7.5 MINUTE SERIES (TOPOGRAPHIC)

WAGON BOX MESA
37°45' N
111°15' W

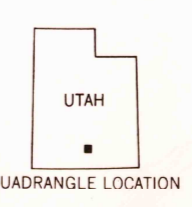


Mapped, edited, and published by the Geological Survey
Control by USGS and USC&GS
Topography by photogrammetric methods from aerial
photographs taken 1958. Field checked 1964
Polyconic projection. 1927 North American datum
10,000-foot grid based on Utah coordinate system, south zone
1000-meter Universal Transverse Mercator grid ticks,
zone 12, shown in blue
Where omitted, land lines have not been established



SCALE 1:24,000
CONTOUR INTERVAL 40 FEET
DOTTED LINES REPRESENT 20-FOOT CONTOURS
DATUM IS MEAN SEA LEVEL

USGS
Historical File
Topographic Division



U.S.G.S. ROAD CLASSIFICATION
Improved dirt -----
FILE COPY
TOPOGRAPHIC DIVISION

RED BREAKS, UTAH
N3737.5—W11115/7.5

DEC 17 1965

THIS MAP COMPLIES WITH NATIONAL MAP ACCURACY STANDARDS
FOR SALE BY U. S. GEOLOGICAL SURVEY, DENVER, COLORADO 80225, OR WASHINGTON, D. C. 20242
A FOLDER DESCRIBING TOPOGRAPHIC MAPS AND SYMBOLS IS AVAILABLE ON REQUEST

1964
ANS 3759 III NE—SERIES 5897