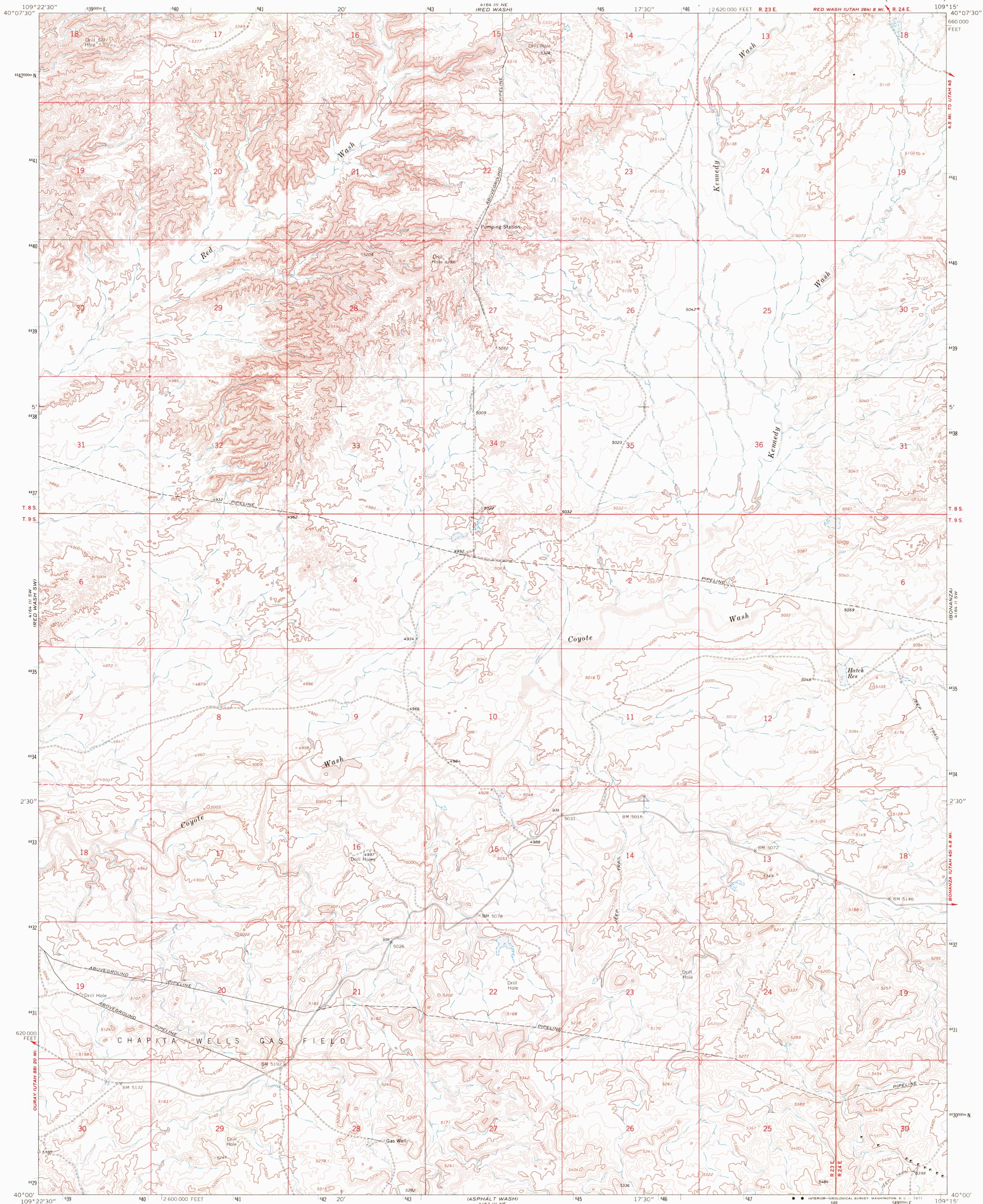
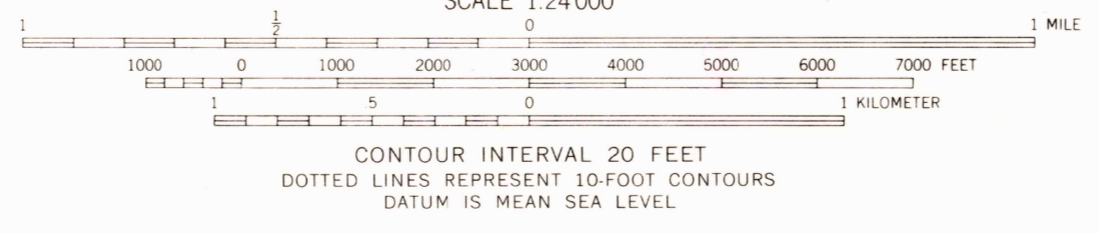
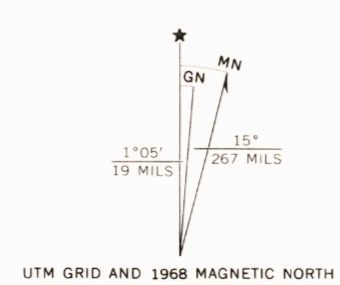


UNITED STATES  
DEPARTMENT OF THE INTERIOR  
GEOLOGICAL SURVEY

RED WASH SE QUADRANGLE  
UTAH-UINTAH CO.  
7.5 MINUTE SERIES (TOPOGRAPHIC)



Mapped, edited, and published by the Geological Survey  
Control by USGS and USC&GS  
Topography by photogrammetric methods from aerial  
photographs taken 1965. Field checked 1968  
Polyconic projection. 1927 North American datum  
10,000-foot grid based on Utah coordinate system, central zone  
1000-meter Universal Transverse Mercator grid ticks,  
zone 12, shown in blue



USGS  
Historical File  
Topographic Division

ROAD CLASSIFICATION  
Light-duty road, all weather, Unimproved road, fair or dry  
improved surface weather

UTAH  
FILE COPY  
TOPOGRAPHIC DIVISION

RED WASH SE, UTAH  
N4000-W10915-7.5

1968  
AMS 4164 III SE-SERIES V897

THIS MAP COMPLIES WITH NATIONAL MAP ACCURACY STANDARDS  
FOR SALE BY U.S. GEOLOGICAL SURVEY, DENVER, COLORADO 80225, OR WASHINGTON, D.C. 20242  
A FOLDER DESCRIBING TOPOGRAPHIC MAPS AND SYMBOLS IS AVAILABLE ON REQUEST

2840  
MAY 18 1971