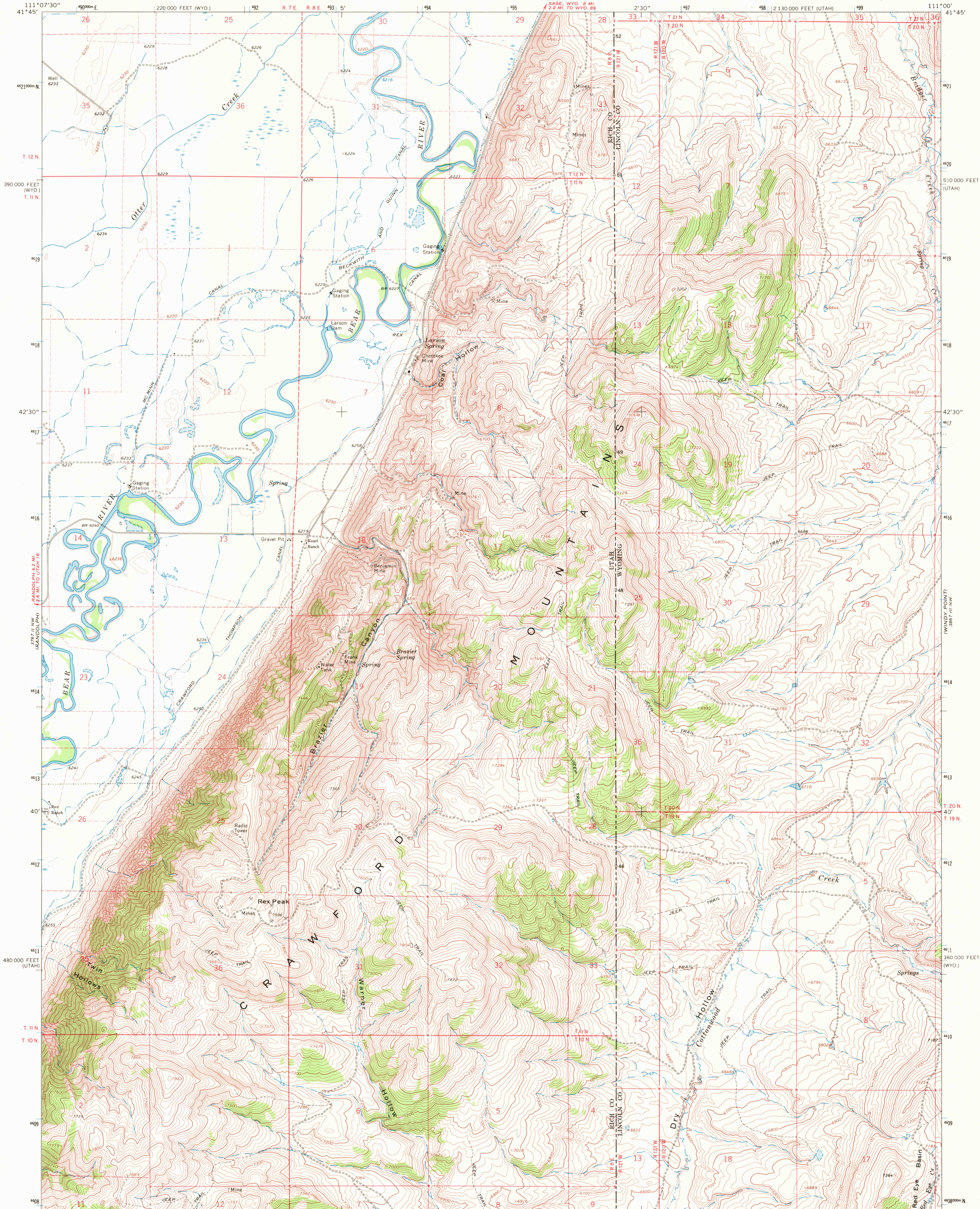
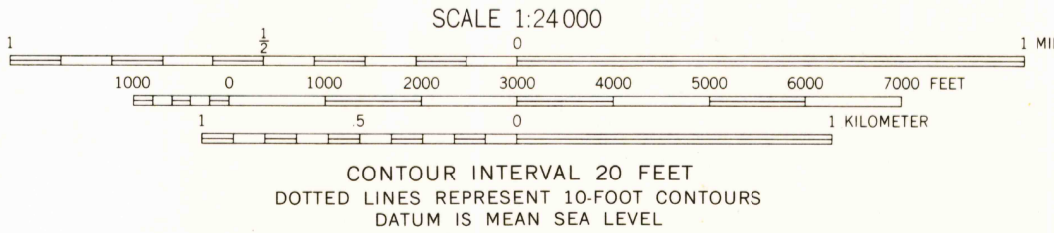
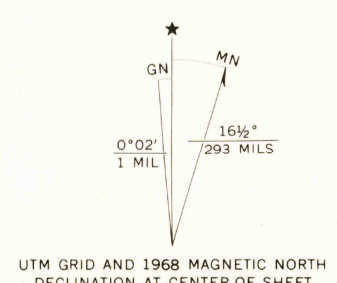


3887 V
1:62,500



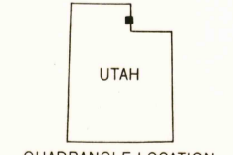
Mapped, edited, and published by the Geological Survey
Control by USGS and USC&GS
Topography by photogrammetric methods from aerial
photographs taken 1964 and planetable surveys 1968
Polyconic projection. 1927 North American datum
10,000-foot grics based on Utah coordinate system,
north zone, and Wyoming coordinate system, west zone
1000-meter Universal Transverse Mercator grid ticks,
zone 12, shown in blue
Fine red dashed lines indicate selected fence lines



CONTOUR INTERVAL 20 FEET
DOTTED LINES REPRESENT 10-FOOT CONTOURS
DATUM IS MEAN SEA LEVEL

USGS
Historical File
Topographic Division

ROAD CLASSIFICATION
Light-duty road, all weather, improved surface
Unimproved road, fair or dry weather



THIS MAP COMPLIES WITH NATIONAL MAP ACCURACY STANDARDS
FOR SALE BY U. S. GEOLOGICAL SURVEY, DENVER, COLORADO 80225, OR WASHINGTON, D. C. 20242
A FOLDER DESCRIBING TOPOGRAPHIC MAPS AND SYMBOLS IS AVAILABLE ON REQUEST

U.S.G.S. REX PEAK, UTAH-WYO.
N4137.5-W11100/7.5
1968
AMS 3767 II NE-SERIES V897

2825
OCT 26 1970