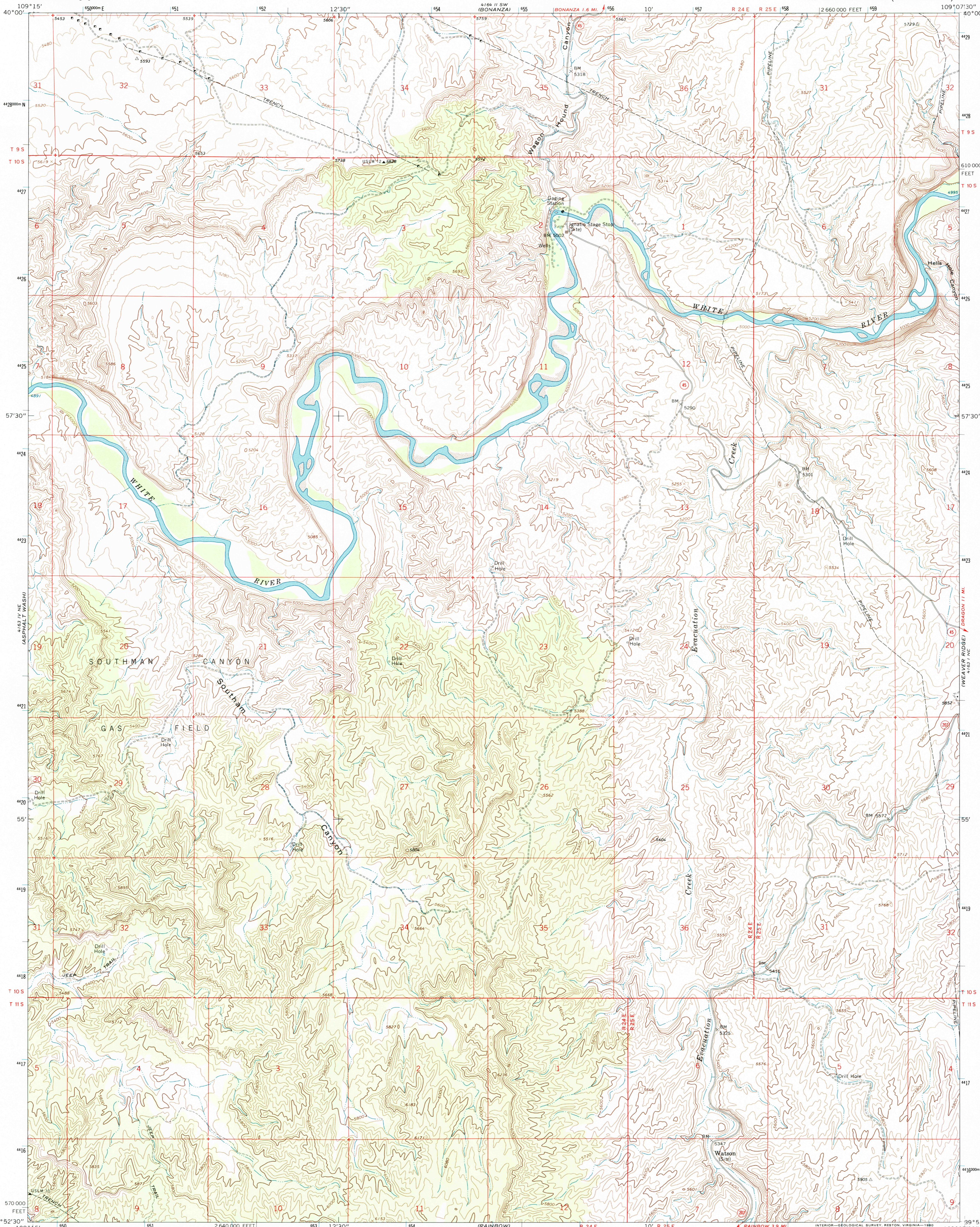


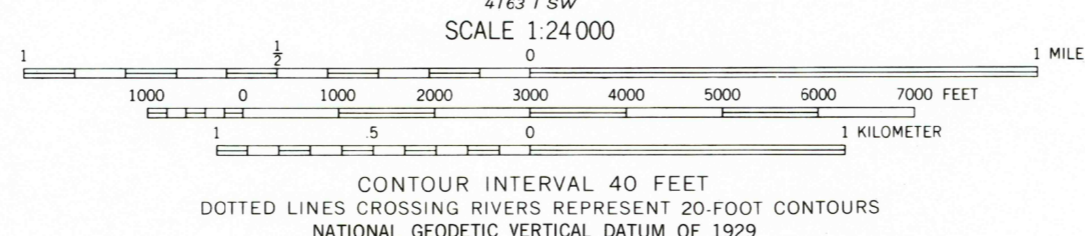
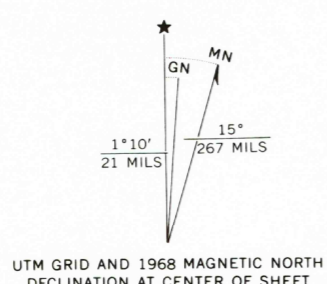


U.S. DEPARTMENT OF THE INTERIOR  
U.S. GEOLOGICAL SURVEY

SOUTHAM CANYON QUADRANGLE  
UTAH—UINTAH CO.  
7.5 MINUTE SERIES (TOPOGRAPHIC)



Mapped, edited, and published by the Geological Survey  
Control by USGS and USC&GS  
Topography by photogrammetric methods from aerial photographs taken 1965. Field checked 1968  
Polyconic projection. 1927 North American datum 10,000-foot grid based on Utah coordinate system, central zone 1000-meter Universal Transverse Mercator grid ticks, zone 12, shown in blue  
To place on the predicted North American Datum 1983 move the projection lines 7 meters north and 58 meters east as shown by dashed corner ticks



**ROAD CLASSIFICATION**  
Light-duty road, all weather, Unimproved road, fair or dry weather  
improved surface weather  
State Route

**SOUTHAM CANYON, UTAH**  
N3952.5—W10907.5/7.5

THIS MAP COMPLIES WITH NATIONAL MAP ACCURACY STANDARDS  
FOR SALE BY U.S. GEOLOGICAL SURVEY  
P.O. BOX 25286, DENVER, COLORADO 80225  
A FOLDER DESCRIBING TOPOGRAPHIC MAPS AND SYMBOLS IS AVAILABLE ON REQUEST



APR 2003

1968  
DMA 4163 1 NW—SERIES V897

RECEIVED  
MAY 27 2003  
HISTORICAL MAP ARCHIVES

