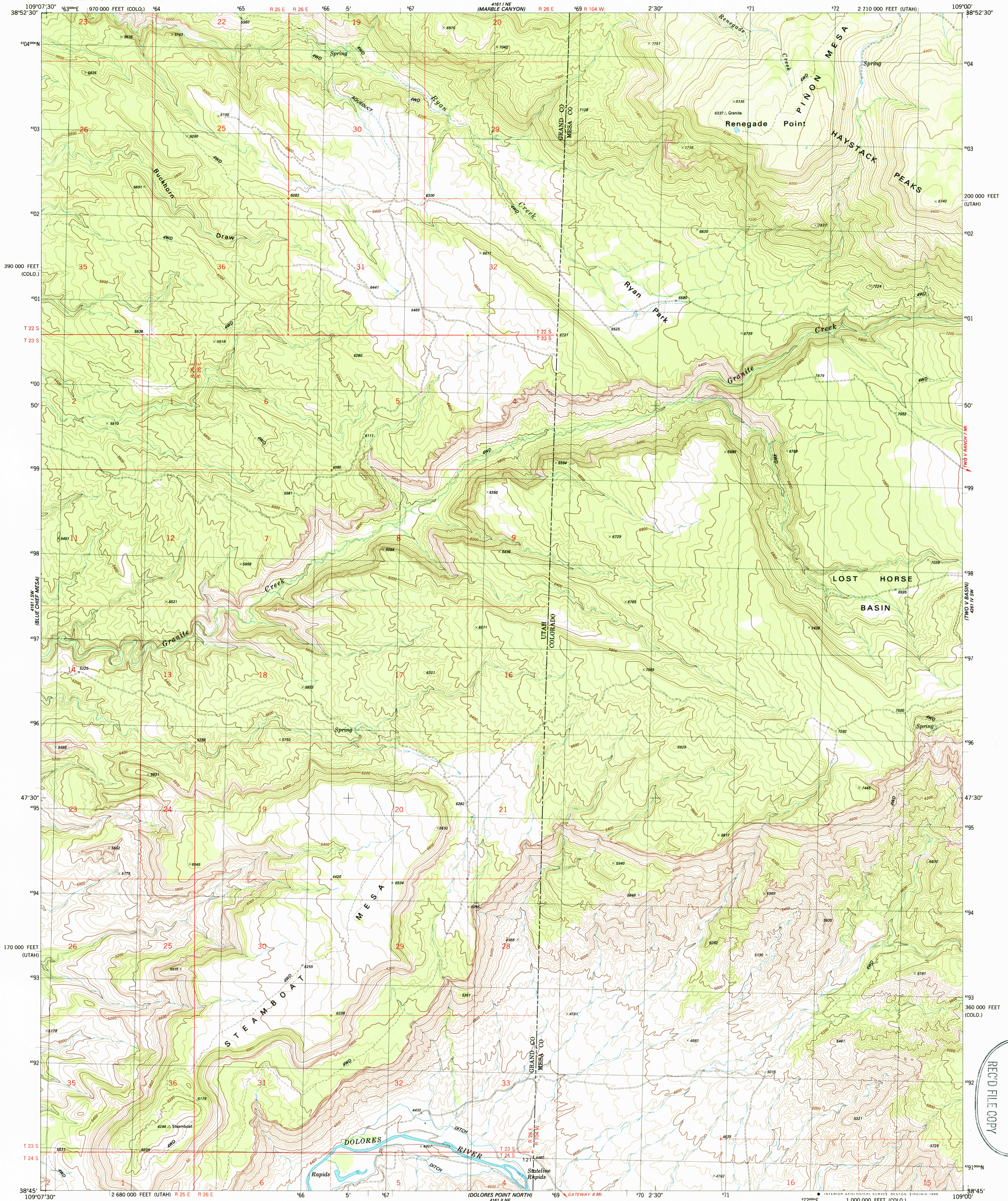


UNITED STATES  
DEPARTMENT OF THE INTERIOR  
GEOLOGICAL SURVEY

STEAMBOAT MESA QUADRANGLE  
UTAH-COLORADO  
7.5 MINUTE SERIES (TOPOGRAPHIC)  
SE 1/4 COATES CREEK 15' QUADRANGLE



Mapped, edited, and published by the Geological Survey

Control by USGS and NOS/NOAA

Topography by photogrammetric methods from aerial photographs taken 1980. Field checked 1981. Map edited 1985

Projection: Utah coordinate system, central zone (Lambert conformal conic)

10,000-foot grid ticks based on Utah coordinate system, central zone and Colorado coordinate system, central zone

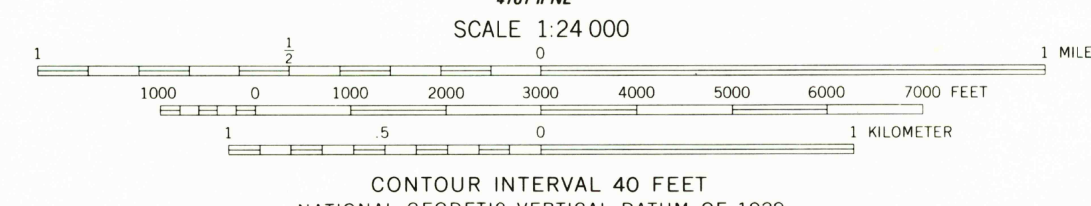
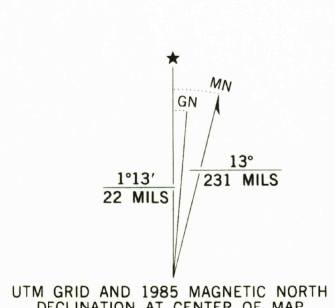
1000-meter Universal Transverse Mercator grid, zone 12

1927 North American Datum

To place on the predicted North American Datum 1983 move the projection lines 6 meters north and 58 meters east as shown by dashed corner ticks

Certain land lines are omitted because of insufficient data

Fine red dashed lines indicate selected fence lines



ROAD CLASSIFICATION  
Primary highway, hard surface  
Secondary highway, hard surface  
Unimproved road  
Interstate Route  
U. S. Route  
State Route  
Light-duty road, hard or improved surface  
Unimproved road

STEAMBOAT MESA, UTAH-COLO.  
SE 1/4 COATES CREEK 15' QUADRANGLE  
38109-G1-TF-024

1985

DMA 4161 1 SE-SERIES V807

USGS MAP HISTORICAL MAP  
FEB 23 1986  
REC'D FILE COPY