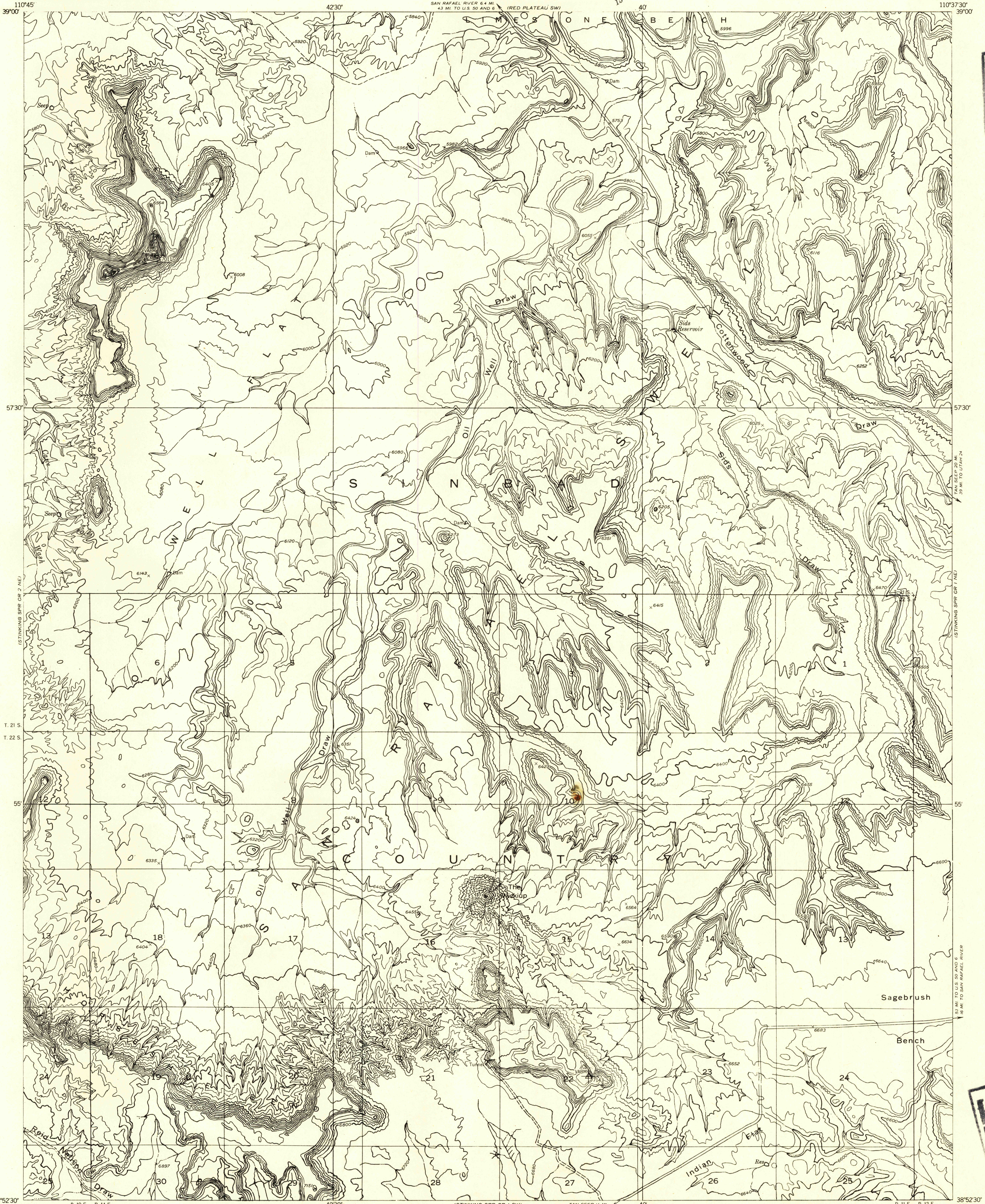


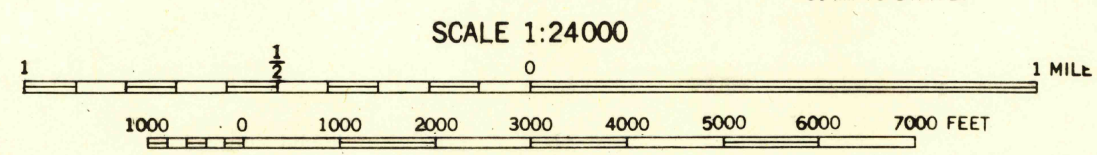
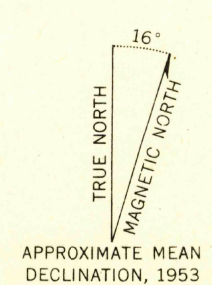
Preliminary edition
Pending completion of 1:62,500 scale
15 minute maps covering this area



FILE COPY

FILE COPY

Mapped by the Geological Survey 1953
Topography by multiplex methods from
aerial photographs taken 1951-52



CONTOUR INTERVAL 40 FEET
DATUM IS MEAN SEA LEVEL

USGS
Historical File
Topographic Division

ROAD CLASSIFICATION
Improved ——— Unimproved - - - - -

STINKING SPRING CREEK 1 NW, UTAH
N3852.5-W11037.5/7.5

JUN 22 1954