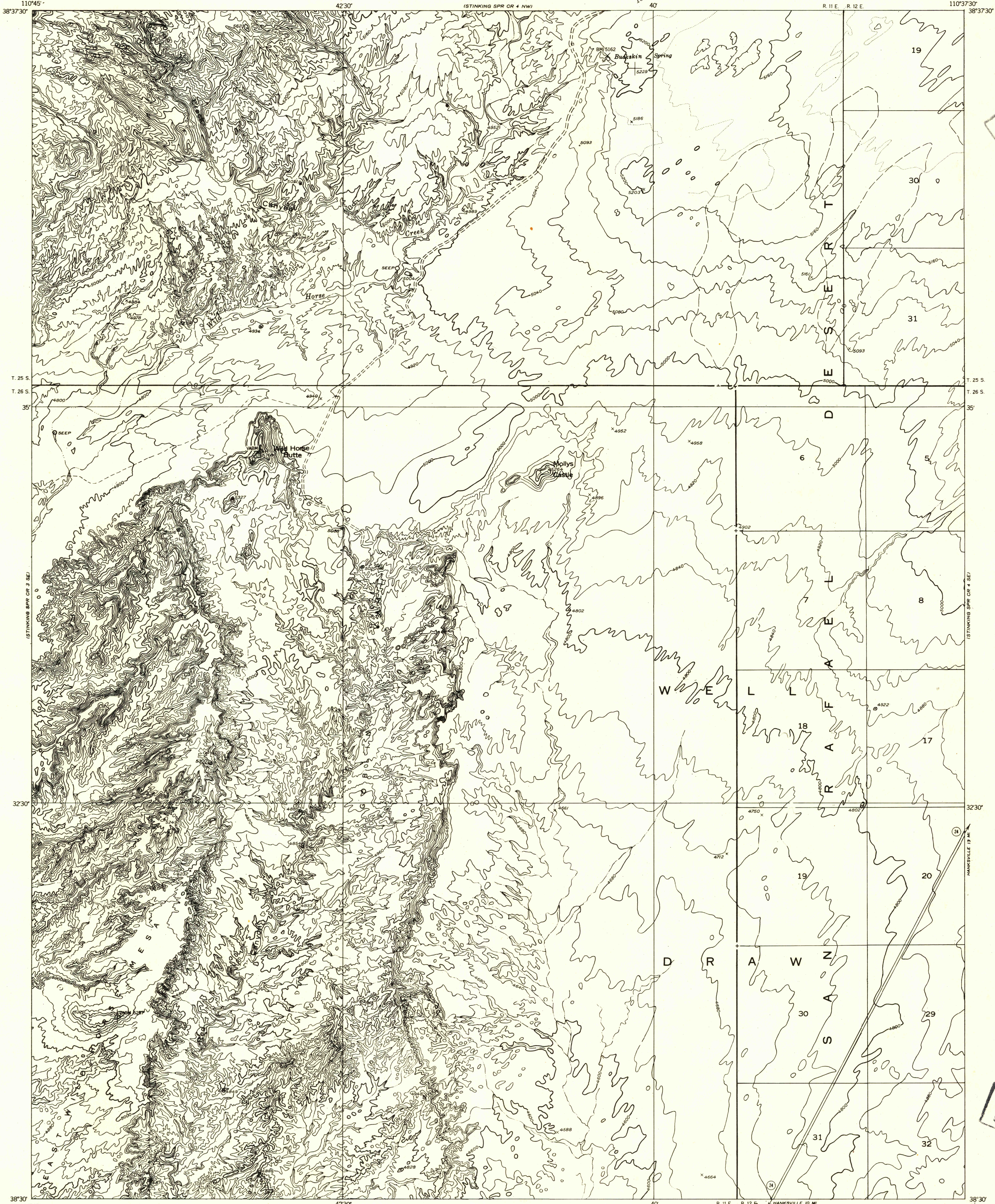


UNITED STATES  
DEPARTMENT OF THE INTERIOR  
GEOLOGICAL SURVEY

Preliminary edition  
Pending completion of 1:62,500 scale  
15 minute maps covering this area

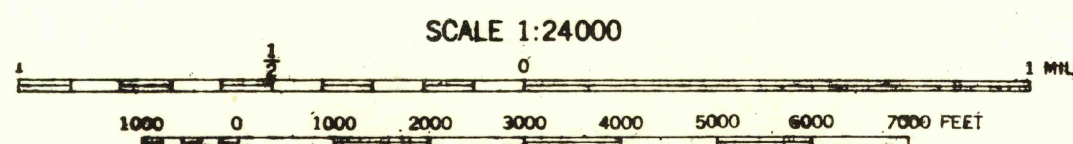
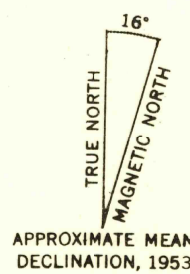
STINKING SPRINGS CREEK 4 SW QUADRANGLE  
UTAH-EMERY CO.



FILE COPY

FILE COPY

Mapped by the Geological Survey 1953  
Topography by multiplex methods from  
aerial photographs taken 1951-52



CONTOUR INTERVAL 40 FEET  
DATUM IS MEAN SEA LEVEL

USGS  
Historical File  
Topographic Division

ROAD CLASSIFICATION  
Improved Unimproved

STINKING SPRINGS CREEK 4 SW, UTAH  
N3830-W11037.5/7.5

JUN 23 1954