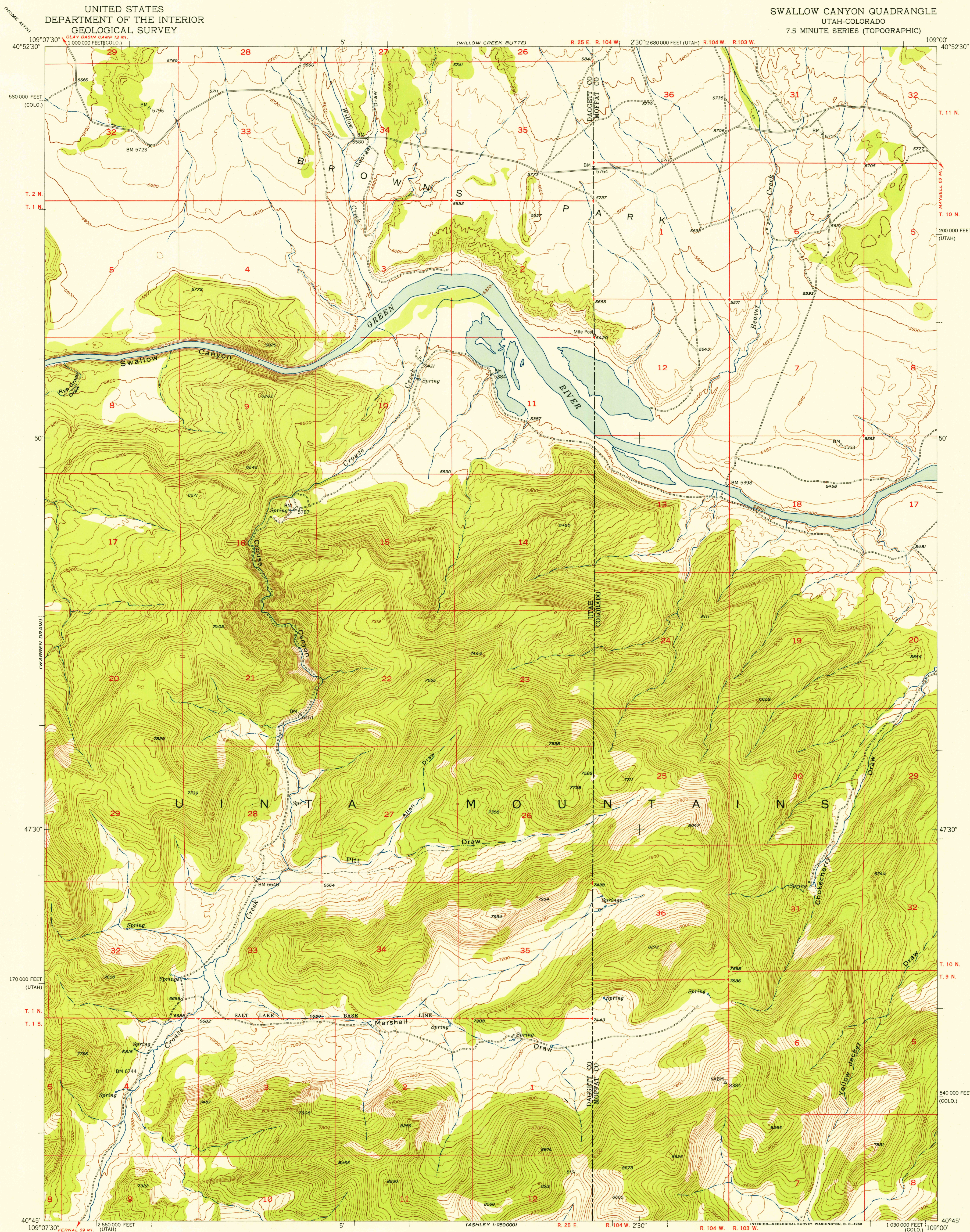
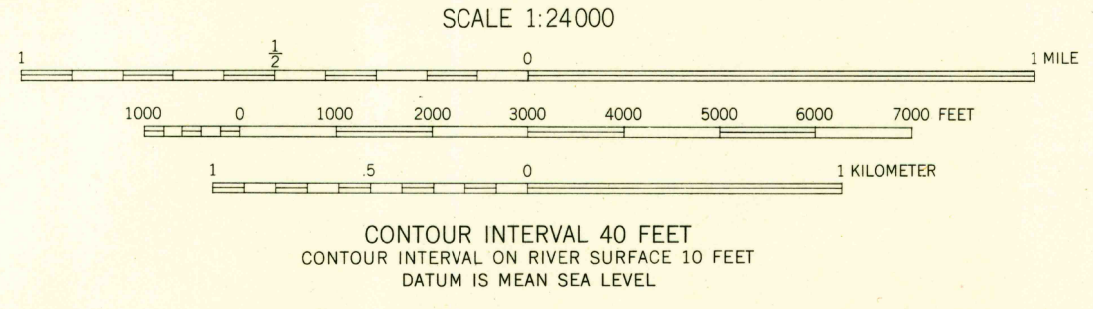
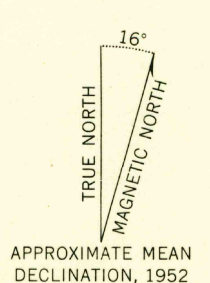


U.S.G.S.
FILE COPY
Inspector and Editor



U.S.G.S.
FILE COPY
Inspector and Editor

ASHLEY 1:250,000
Mapped, edited, and published by the Geological Survey
Control by USGS
Topography from aerial photographs by photogrammetric methods
Aerial photographs taken 1950. Field check 1952
Polyconic projection. 1927 North American datum
10,000-foot grids based on Utah coordinate system, north zone
and Colorado coordinate system, north zone
Unchecked elevations are shown in brown

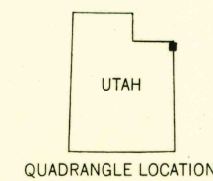


USGS
Historical File
Topographic Division

ROAD CLASSIFICATION

| | | |
|-------------|---------------|-----------------|
| Heavy-duty | 4 LANE 6 LANE | Light-duty |
| Medium-duty | 4 LANE 6 LANE | Unimproved dirt |

U.S. Route (square symbol)
State Route (circle symbol)



SWALLOW CANYON, UTAH-COLO.
N4045-W10900/7.5
1952

THIS MAP COMPLIES WITH NATIONAL MAP ACCURACY STANDARDS
FOR SALE BY U. S. GEOLOGICAL SURVEY, FEDERAL CENTER, DENVER, COLORADO OR WASHINGTON 25, D. C.
A FOLDER DESCRIBING TOPOGRAPHIC MAPS AND SYMBOLS IS AVAILABLE ON REQUEST

JAN 5 1954
2070