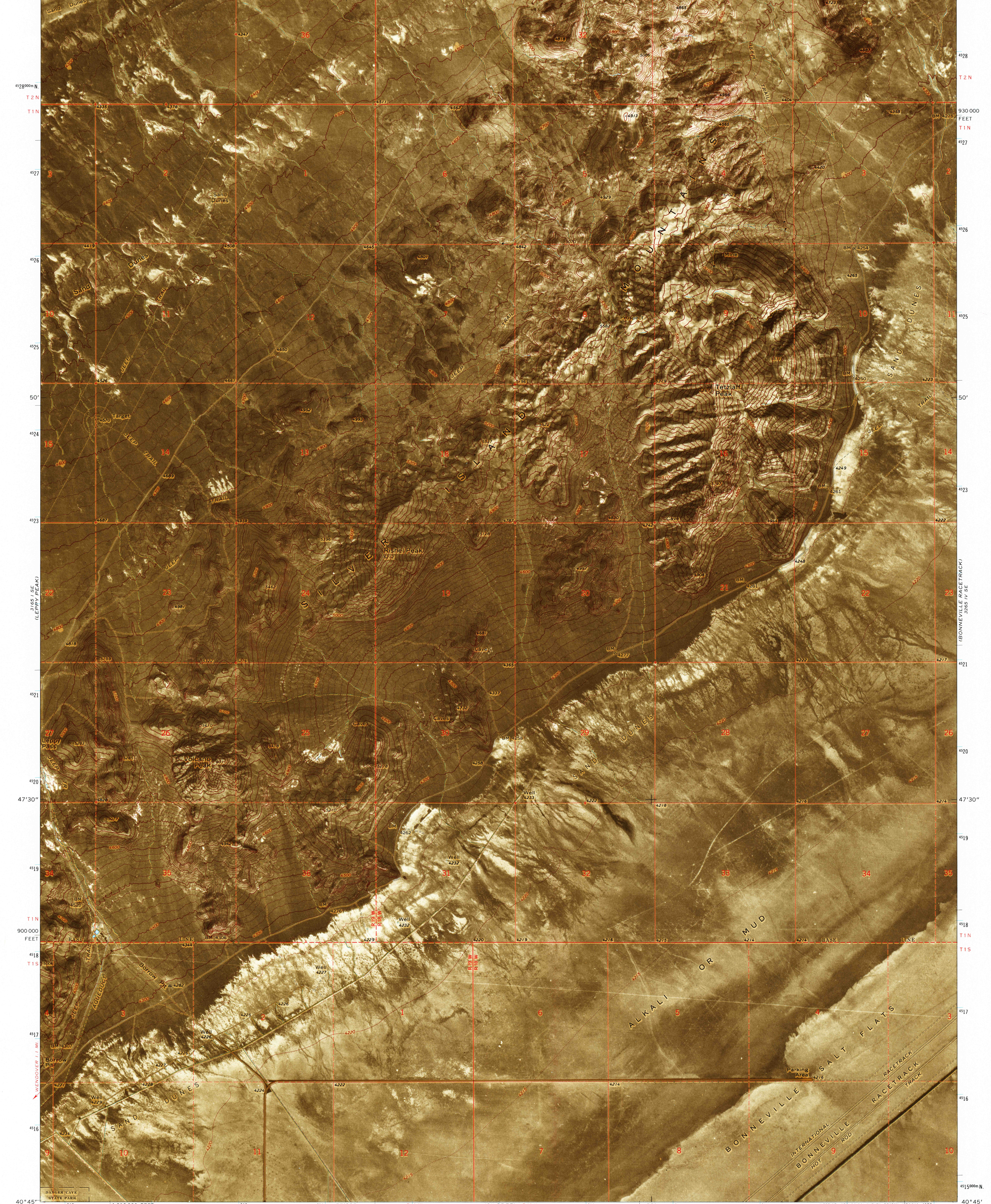
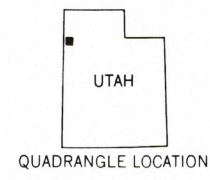
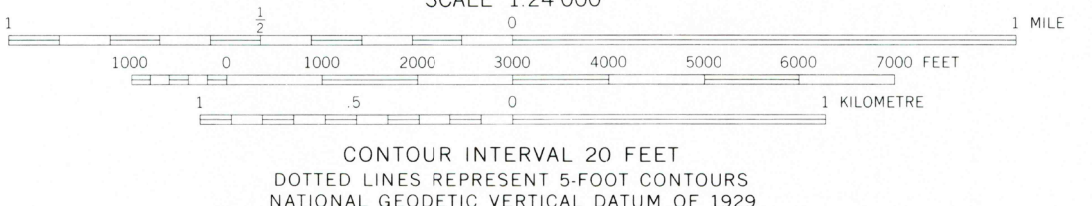
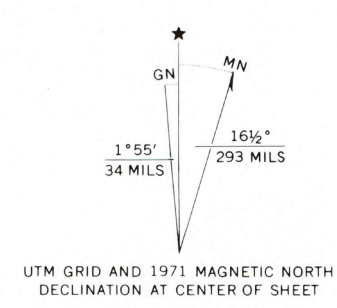


114°00' 749 750 R 19 W 57°30' 751 R 18 W 52 (SILVER ISLAND PASS) 3265 IV NW DONNER-REED PASS 14 MI. 754 55' 755 756 1 340 000 FEET 757 113°52'30" 40°52'30"



Mapped, edited, and published by the Geological Survey
Control by USGS and NOS/NOAA
Topography by photogrammetric methods from aerial photographs taken 1970 and planetable surveys 1971
Orthophotomosaic from aerial photographs taken 1972
Projection and 10,000-foot grid ticks: Utah coordinate system, central zone (Lambert conformal conic)
1000-metre Universal Transverse Mercator grid ticks, zone 12, shown in blue. 1927 North American datum
Where omitted, land lines have not been established



ROAD CLASSIFICATION

Primary highway, hard surface	Light-duty road, hard or improved surface	
Secondary highway, hard surface	Unimproved road	
○ Interstate Route	○ U. S. Route	○ State Route

THIS MAP COMPLIES WITH NATIONAL MAP ACCURACY STANDARDS
FOR SALE BY U. S. GEOLOGICAL SURVEY DENVER, COLORADO 80225, OR RESTON, VIRGINIA 22092
A FOLDER DESCRIBING TOPOGRAPHIC MAPS AND SYMBOLS IS AVAILABLE ON REQUEST

USGS
HISTORICAL FILE
TOPOGRAPHIC DIVISION

FEB 16 1976
TETZLAFF PEAK, UTAH
N4045-W11352.5/7.5
1971

AMS 3265 IV SW—SERIES V097

Handwritten signature or initials.