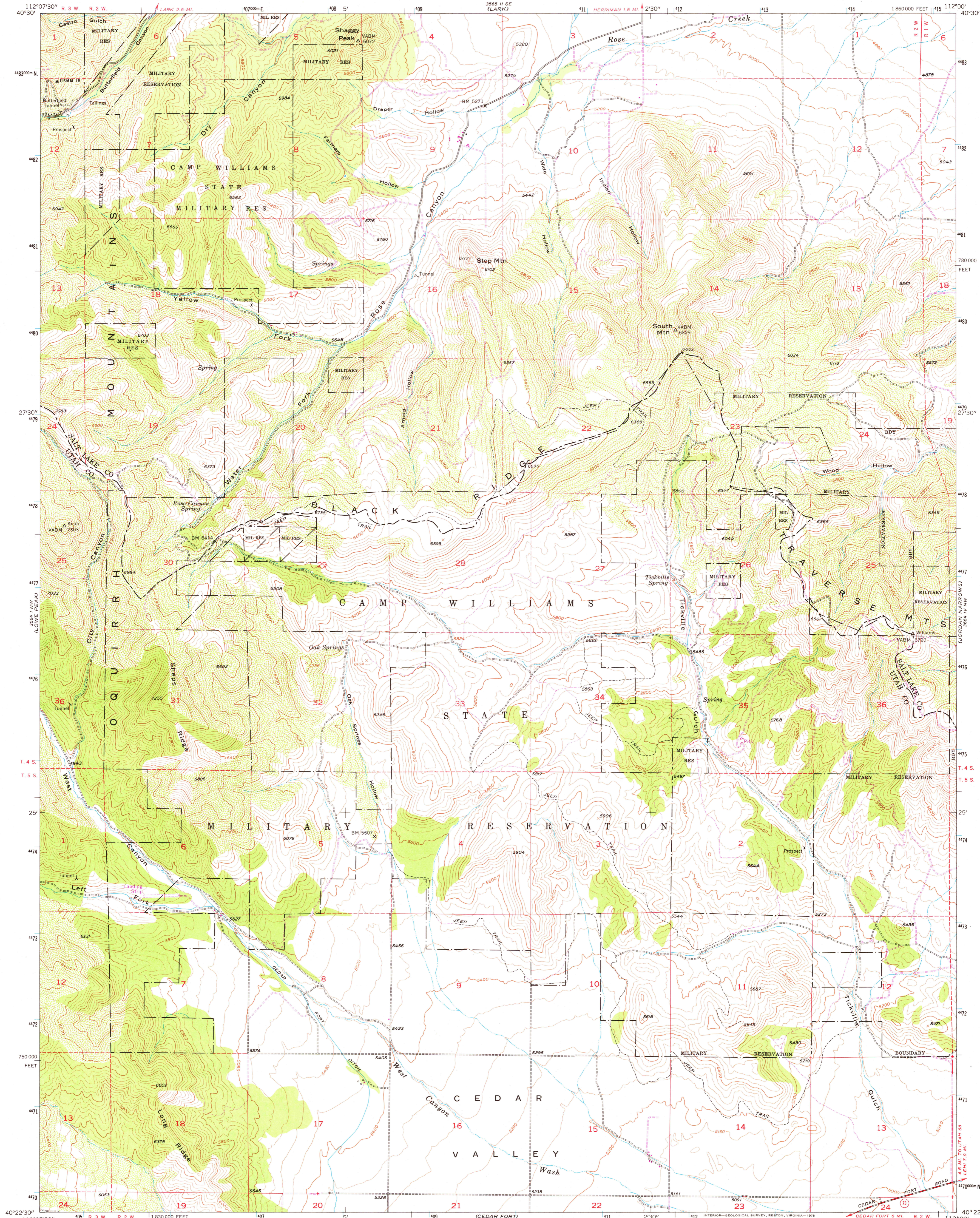
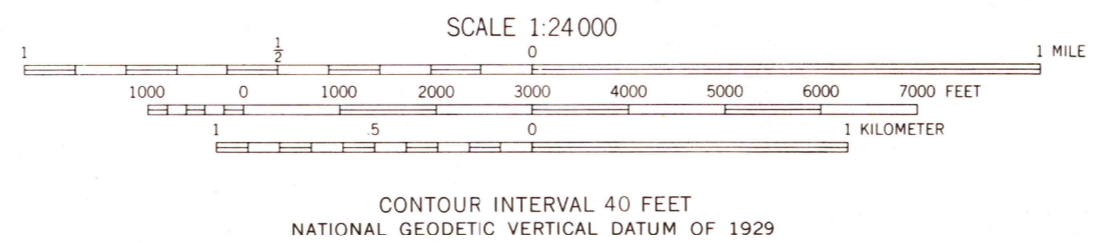


UNITED STATES
DEPARTMENT OF THE INTERIOR
GEOLOGICAL SURVEY

TICKVILLE SPRING QUADRANGLE
UTAH
7.5 MINUTE SERIES (TOPOGRAPHIC)
NE/4 FAIRFIELD 15' QUADRANGLE

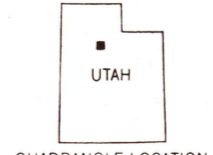


Mapped, edited, and published by the Geological Survey
Control by USGS
Topography from aerial photographs by Kelsh plotter
Aerial photographs taken 1950. Field check 1954
Polyconic projection. 1927 North American datum
10,000-foot grid based on Utah coordinate system, central zone
1000-meter Universal Transverse Mercator grid ticks,
zone 12, shown in blue
Revisions shown in purple compiled from aerial photographs
taken 1969 and 1975. This information not field checked



ROAD CLASSIFICATION

Heavy-duty	Light-duty
Medium-duty	Unimproved dirt
U.S. Route	State Route



TICKVILLE SPRING, UTAH
NE/4 FAIRFIELD 15' QUADRANGLE
N 4022.5-W 11200/7.5
1954
PHOTOREVISED 1969 AND 1975
AMS 3564 1 NE-SERIES V997

THIS MAP COMPLIES WITH NATIONAL MAP ACCURACY STANDARDS
FOR SALE BY U. S. GEOLOGICAL SURVEY, DENVER, COLORADO 80225, OR RESTON, VIRGINIA 22092
A FOLDER DESCRIBING TOPOGRAPHIC MAPS AND SYMBOLS IS AVAILABLE ON REQUEST

APR 28 1978

3200