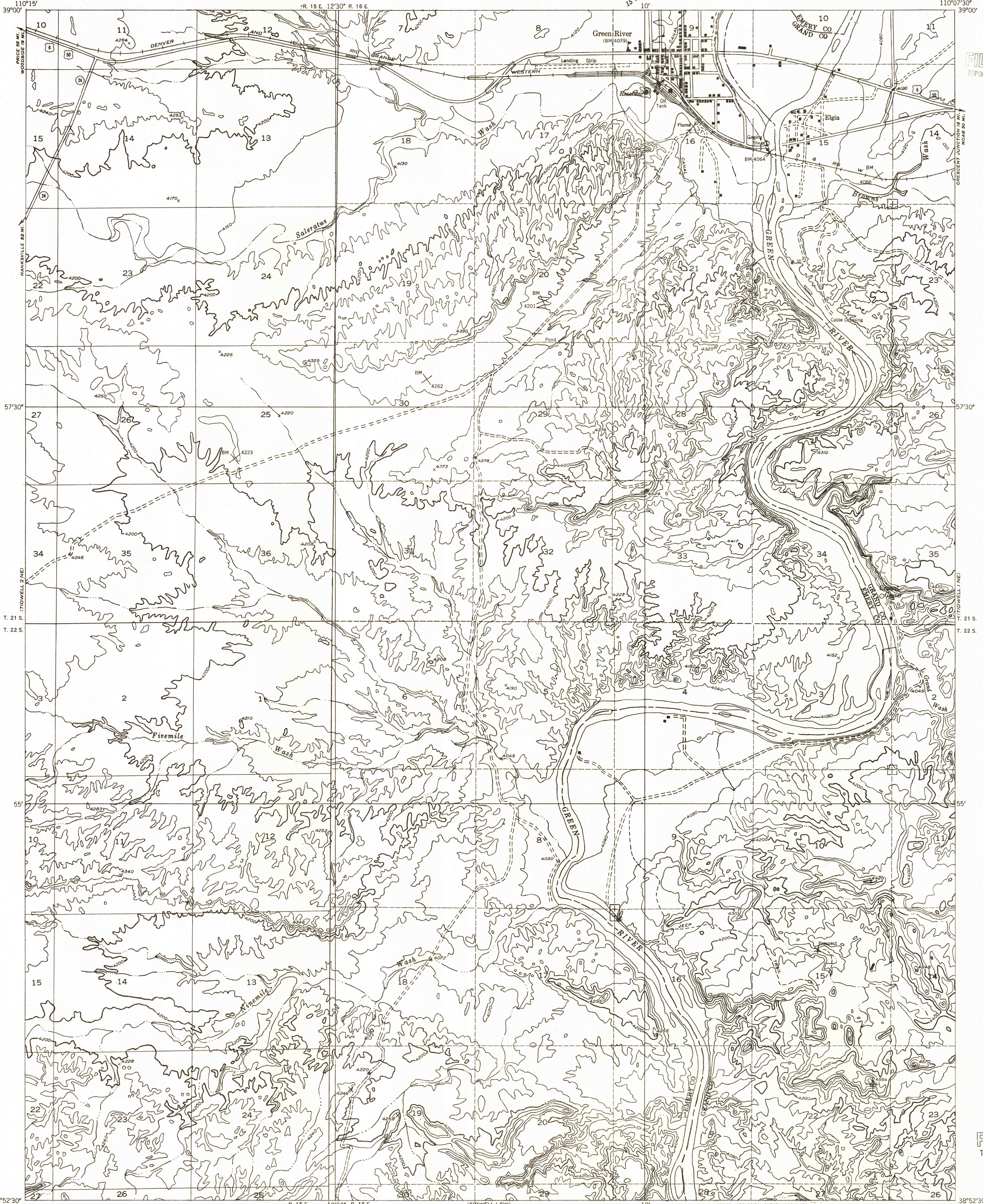


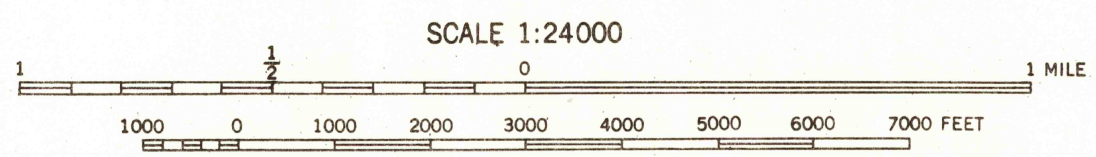
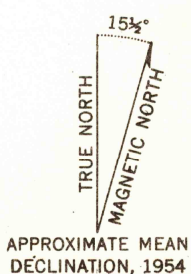
Preliminary edition
Pending completion of 1:62,500 scale
15 minute maps covering this area



U.S.G.S.
FILE COPY
TOPOGRAPHIC DIVISION

U.S.G.S.
FILE COPY
TOPOGRAPHIC DIVISION

Mapped by the Geological Survey 1954
Topography by multiplex methods from
aerial photographs taken 1953
Dashed land lines indicate approximate locations



CONTOUR INTERVAL 40 FEET
DATUM IS MEAN SEA LEVEL

U.S.G.S.
Historical File
Topographic Division

ROAD CLASSIFICATION
Improved ——— Unimproved - - - - -

TIDWELL 1 NW, UTAH
N3852.5-W11007.5/7.5

OCT 5 1955