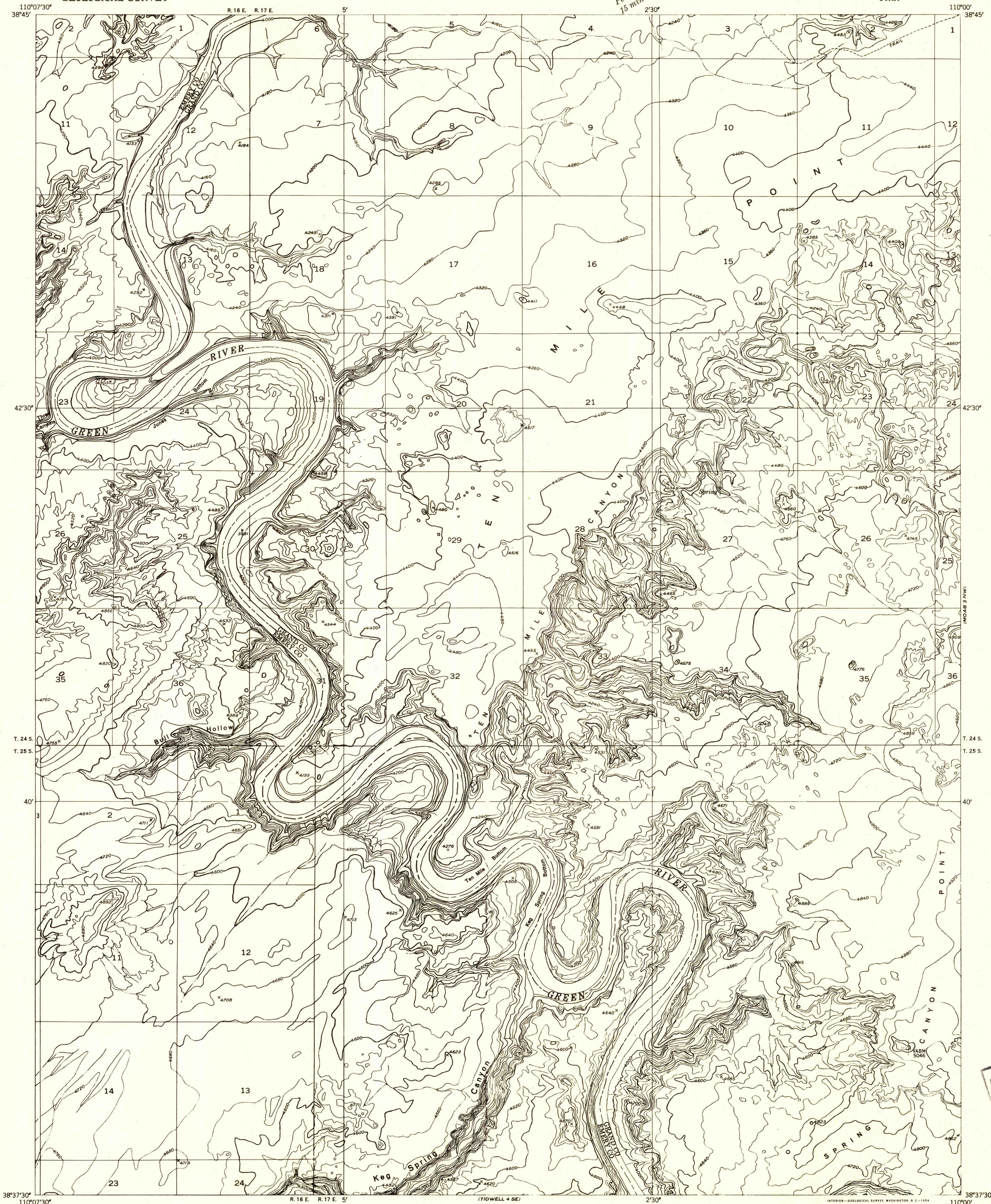


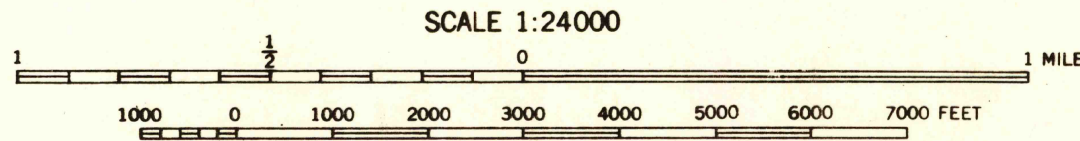
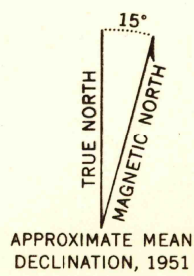
DEPARTMENT OF THE INTERIOR
GEOLOGICAL SURVEY

Preliminary edition
Pending completion of 1:62,500 scale
15 minute maps covering this area

TIDWELL 4 NE QUADRANGLE
UTAH



Mapped by the Geological Survey 1952
Topography by multiplex methods from
aerial photographs taken 1951



USGS
Historical File
Topographic Division

ROAD CLASSIFICATION
Improved ——— Unimproved - - - - -

TIDWELL 4 NE, UTAH
N3837.5-W11000/7.5

MAY 5 1954