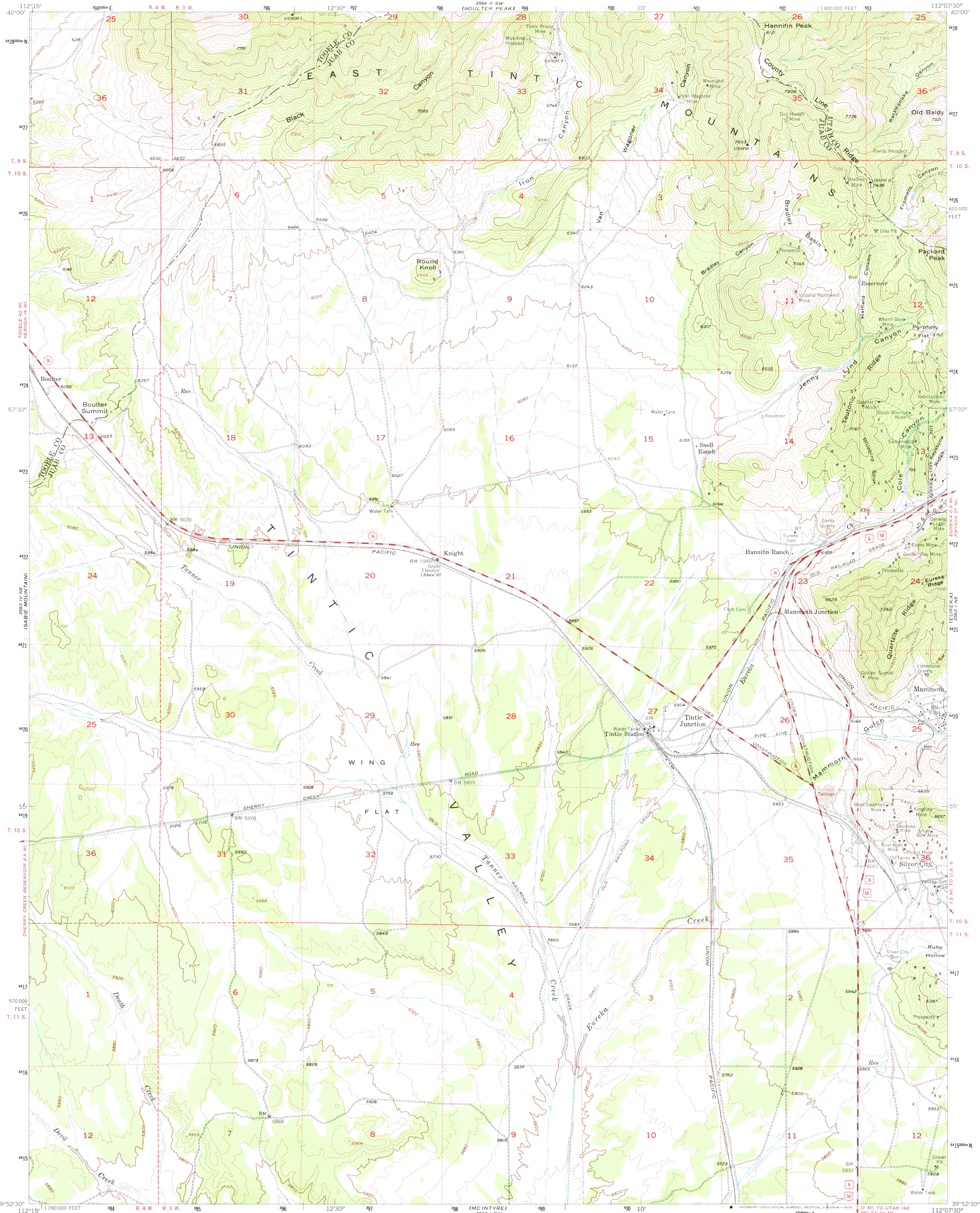
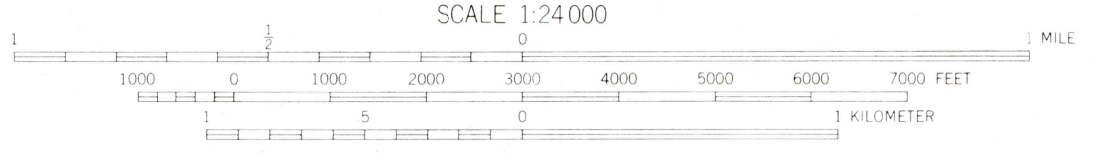
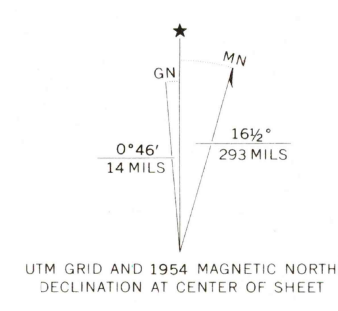


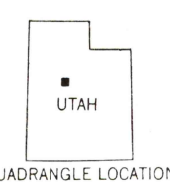
394 1 15 E
(ALLEYS RANGE)



Mapped, edited, and published by the Geological Survey
Control by USGS and USC&GS
Topography from aerial photographs by multiplex methods
Aerial photographs taken 1952. Field check 1954
Polyconic projection. 1927 North American datum
10,000-foot grid based on Utah coordinate system, central zone
Dashed land lines indicate approximate locations
Unchecked elevations are shown in brown
1000-meter Universal Transverse Mercator grid ticks,
zone 12, shown in blue



CONTOUR INTERVAL 40 FEET
DATUM IS MEAN SEA LEVEL



ROAD CLASSIFICATION

| | |
|-------------|-----------------|
| Heavy-duty | Light-duty |
| Medium-duty | Unimproved dirt |
| U.S. Route | State Route |

THIS MAP COMPLIES WITH NATIONAL MAP ACCURACY STANDARDS
FOR SALE BY U. S. GEOLOGICAL SURVEY, DENVER, COLORADO 80225, OR RESTON, VIRGINIA 22092
A FOLDER DESCRIBING TOPOGRAPHIC MAPS AND SYMBOLS IS AVAILABLE ON REQUEST

TINTIC JUNCTION, UTAH
N 3952.5 - W 11207.5/7.5

1954
AMS 3563 1 NW—SERIES V897

FEE 2 174
2095

394 1 15 E
(TINTIC MOUNTAIN)