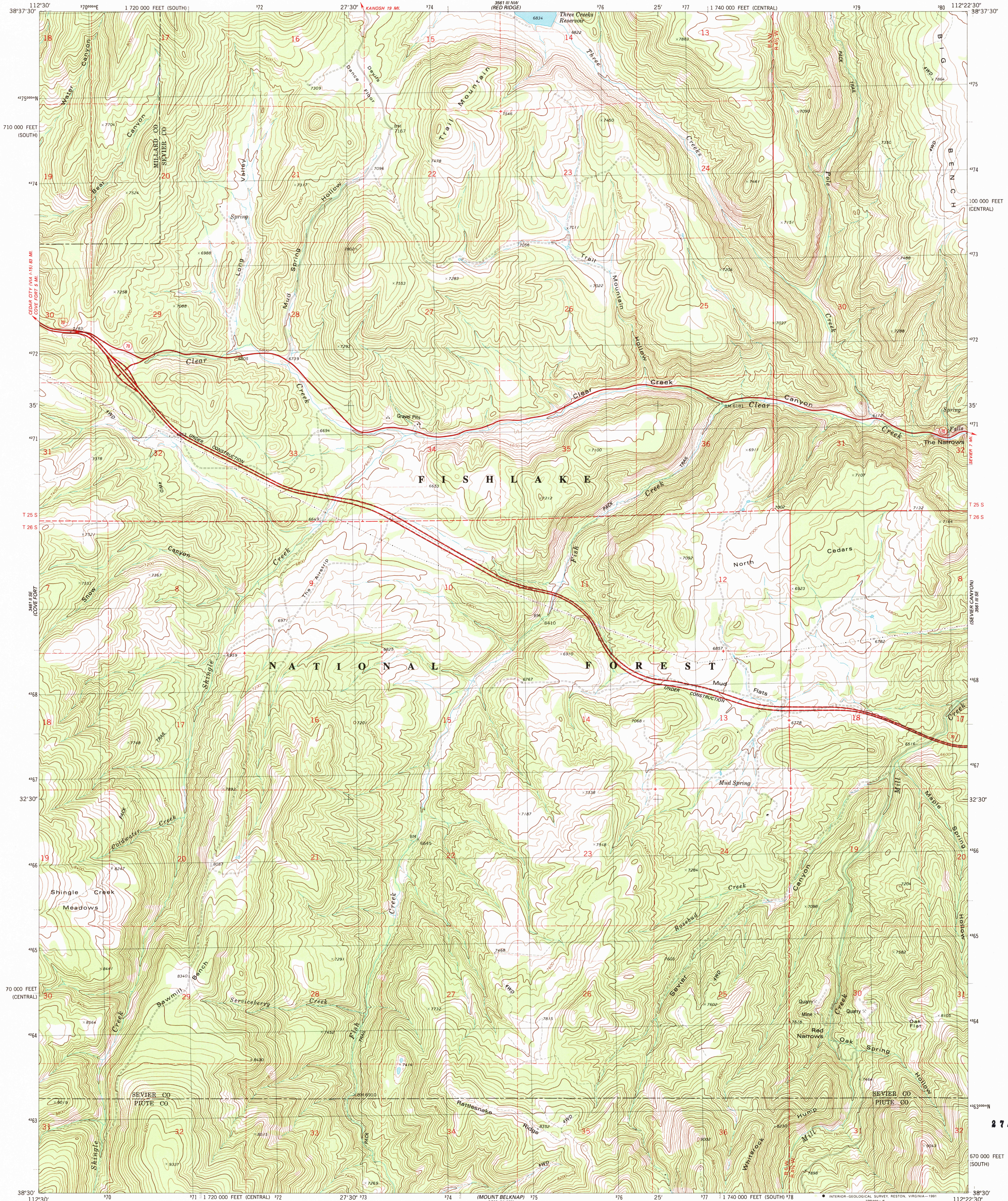


UNITED STATES
DEPARTMENT OF THE INTERIOR
GEOLOGICAL SURVEY

TRAIL MOUNTAIN QUADRANGLE
UTAH
7.5 MINUTE SERIES (TOPOGRAPHIC)



Mapped, edited, and published by the Geological Survey

Control by USGS and NOS/NOAA

Topography by photogrammetric methods from aerial photographs taken 1973. Field checked 1975. Map edited 1981

Projection: Utah coordinate system, central zone (Lambert conformal conic)

10,000-foot grid ticks based on Utah coordinate system, central and south zones

1000-meter Universal Transverse Mercator grid, zone 12

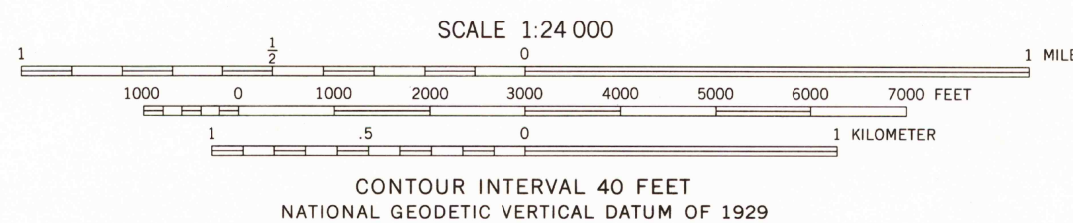
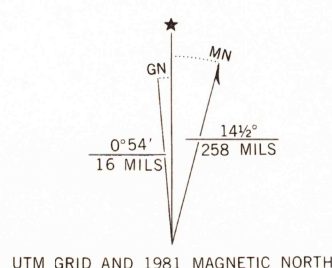
1927 North American datum

To place on the predicted North American Datum 1983 move the projection lines 7 meters north and 67 meters east as shown by dashed corner ticks

Fine red dashed lines indicate selected fence lines

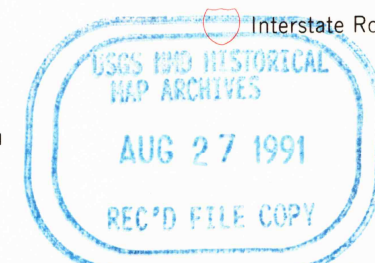
Certain land lines are omitted because of insufficient data

There may be private inholdings within the boundaries of the National or State reservations shown on this map



THIS MAP COMPLIES WITH NATIONAL MAP ACCURACY STANDARDS
FOR SALE BY U. S. GEOLOGICAL SURVEY, DENVER, COLORADO 80225, OR RESTON, VIRGINIA 22092
A FOLDER DESCRIBING TOPOGRAPHIC MAPS AND SYMBOLS IS AVAILABLE ON REQUEST

ROAD CLASSIFICATION	
Primary highway, hard surface	Light-duty road, hard or improved surface
Secondary highway, hard surface	Unimproved road
Interstate Route	U. S. Route
State Route	



TRAIL MOUNTAIN, UTAH
38112-E4-TF-024

1981

DMA 3561 III SW-SERIES V897

27 AUG 1991