

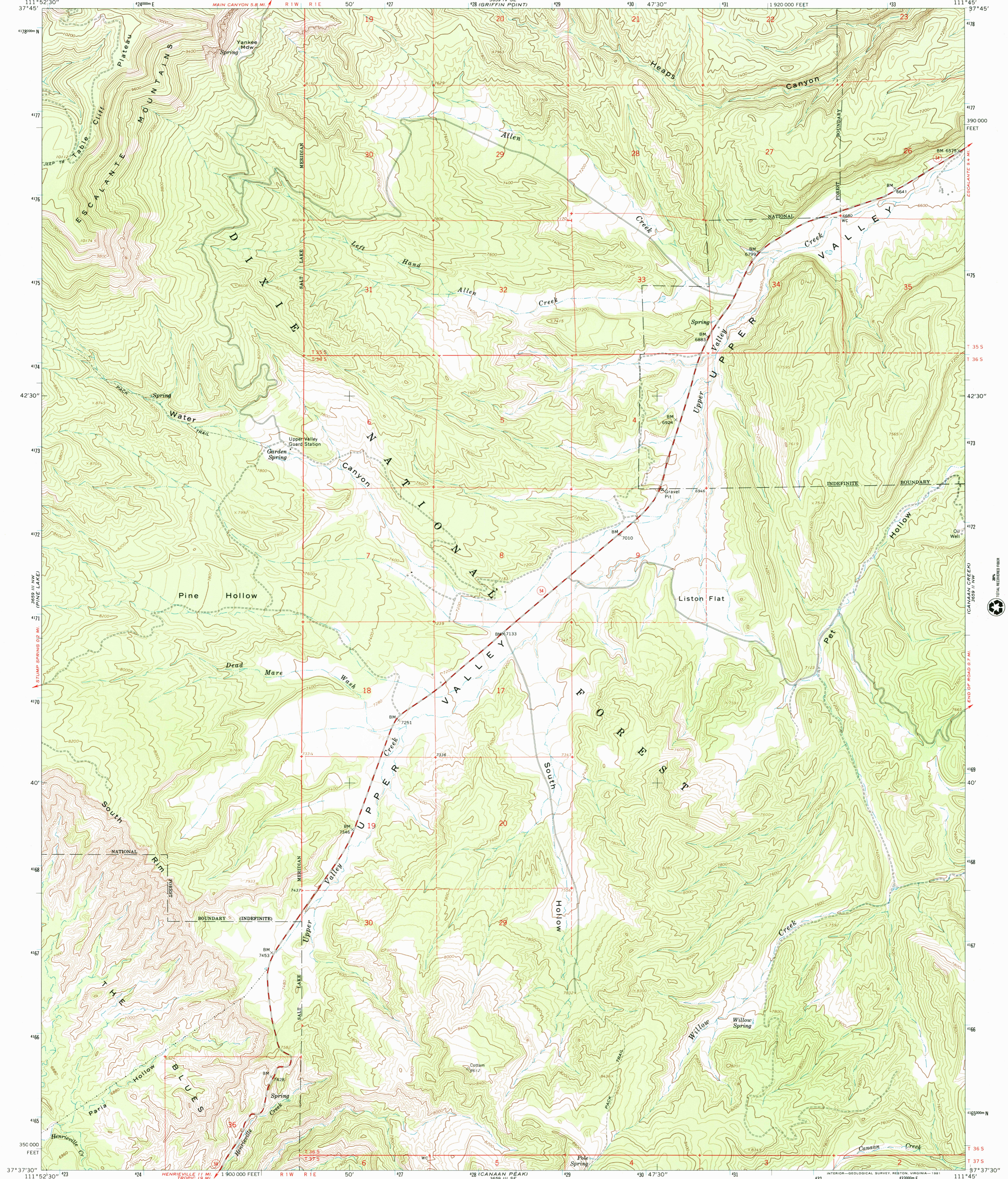
3659 III NW  
LOWER MERIDIAN



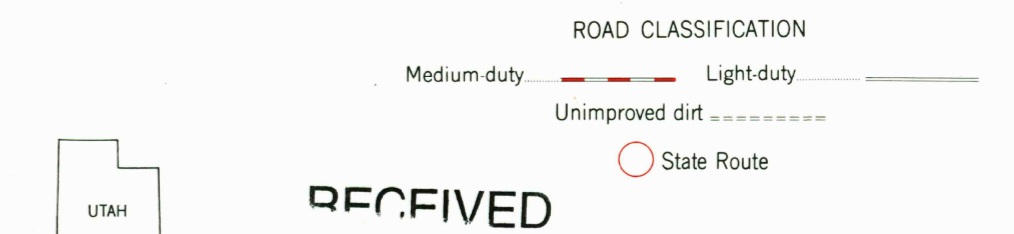
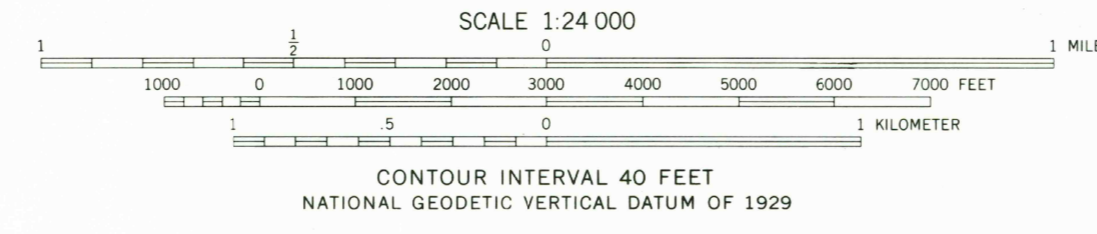
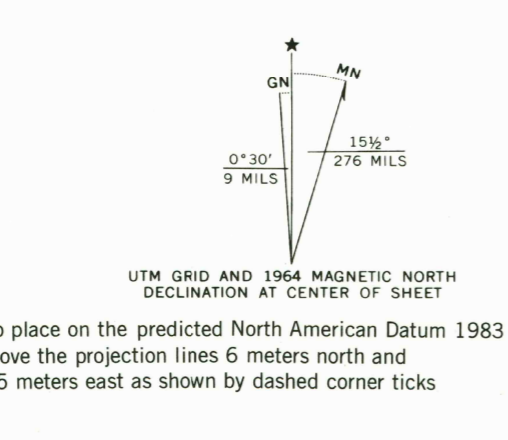
U.S. DEPARTMENT OF THE INTERIOR  
U.S. GEOLOGICAL SURVEY

UPPER VALLEY QUADRANGLE  
UTAH—GARFIELD CO.  
7.5 MINUTE SERIES (TOPOGRAPHIC)

3659 III SW  
UPPER MERIDIAN

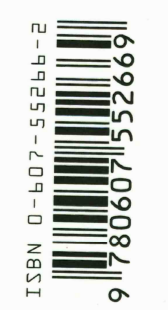


Mapped, edited, and published by the Geological Survey  
Control by USGS and USC&GS  
Topography by photogrammetric methods from aerial photographs taken 1958. Field checked 1964  
Polyconic projection. 1927 North American datum  
10,000-foot grid based on Utah coordinate system, south zone  
1000-meter Universal Transverse Mercator grid ticks,  
zone 12, shown in blue  
Where omitted, land lines have not been established  
There may be private inholdings within the boundaries of  
the National or State reservations shown on this map



RECEIVED  
APR 3 0 2002  
HISTORICAL MAP ARCHIVES

UPPER VALLEY, UTAH  
N3737.5—W11145.7.5  
1964  
DMA 3659 III NE—SERIES V897



9 780607 52666 9