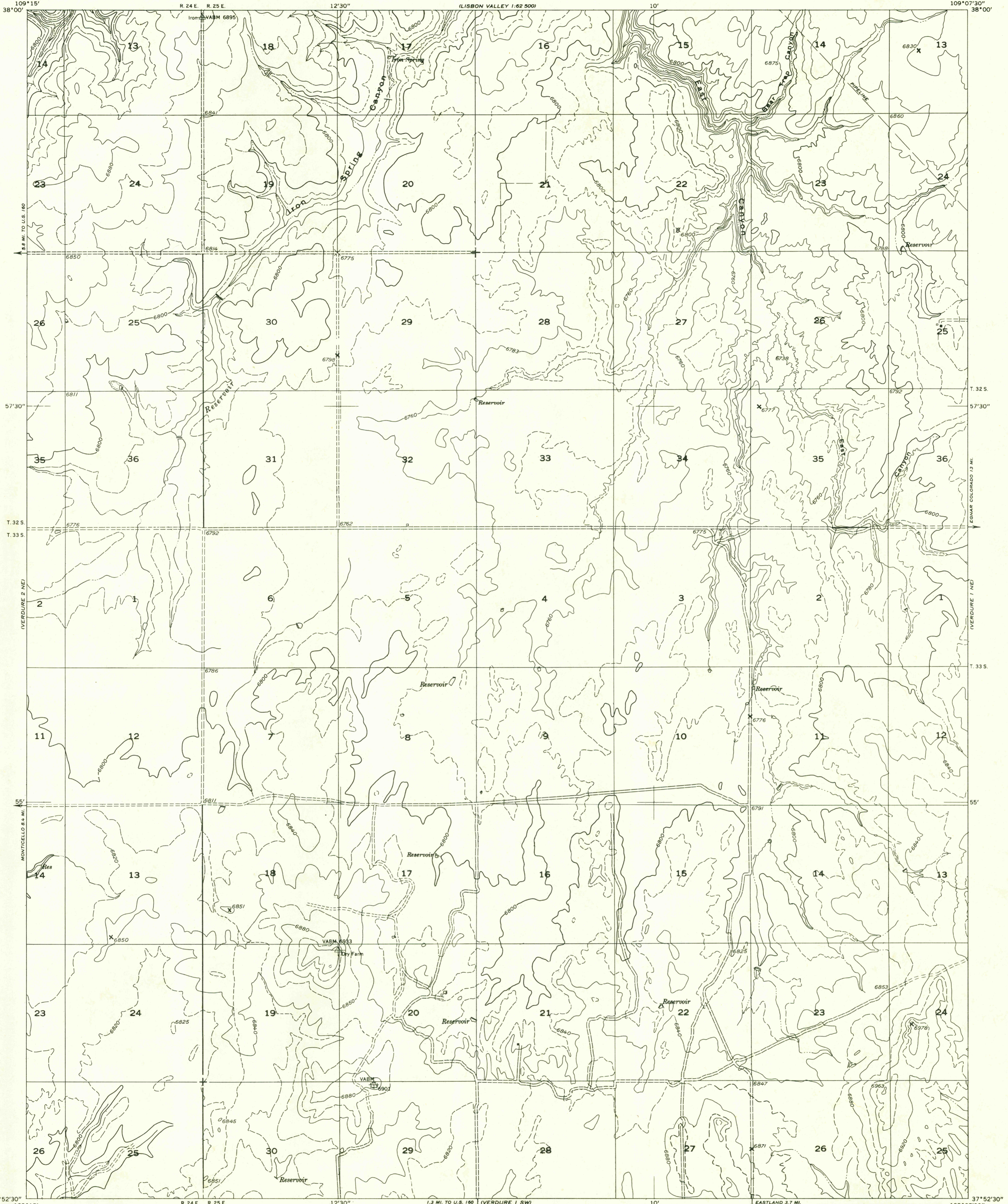


UNITED STATES
DEPARTMENT OF THE INTERIOR
GEOLOGICAL SURVEY

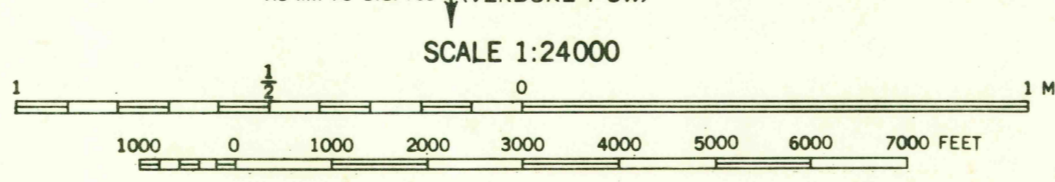
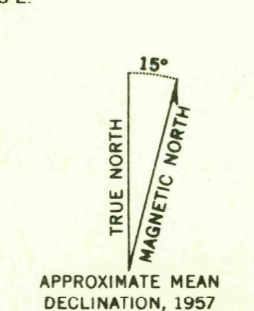
Preliminary edition
Pending completion of 1:62,500 scale
15 minute maps covering this area

VERDURE 1 NW QUADRANGLE
UTAH-SAN JUAN CO.

LISBON VALLEY
1:62,500



Mapped by the Geological Survey 1957
Topography by photogrammetric methods from
aerial photographs taken 1955
Symbols and other detail herein
drawn for 1:62,500 publication



CONTOUR INTERVAL 40 FEET
DASHED LINES REPRESENT 20-FOOT CONTOURS
DATUM IS MEAN SEA LEVEL

USGS
Historical File
Topographic Division

U.S.G.S.
FILE COPY
TOPOGRAPHIC DIVISION

ROAD CLASSIFICATION
Unimproved dirt -----

VERDURE 1 NW, UTAH
N3752.5-W1097.5/7.5

FEB - 3 1959
1965