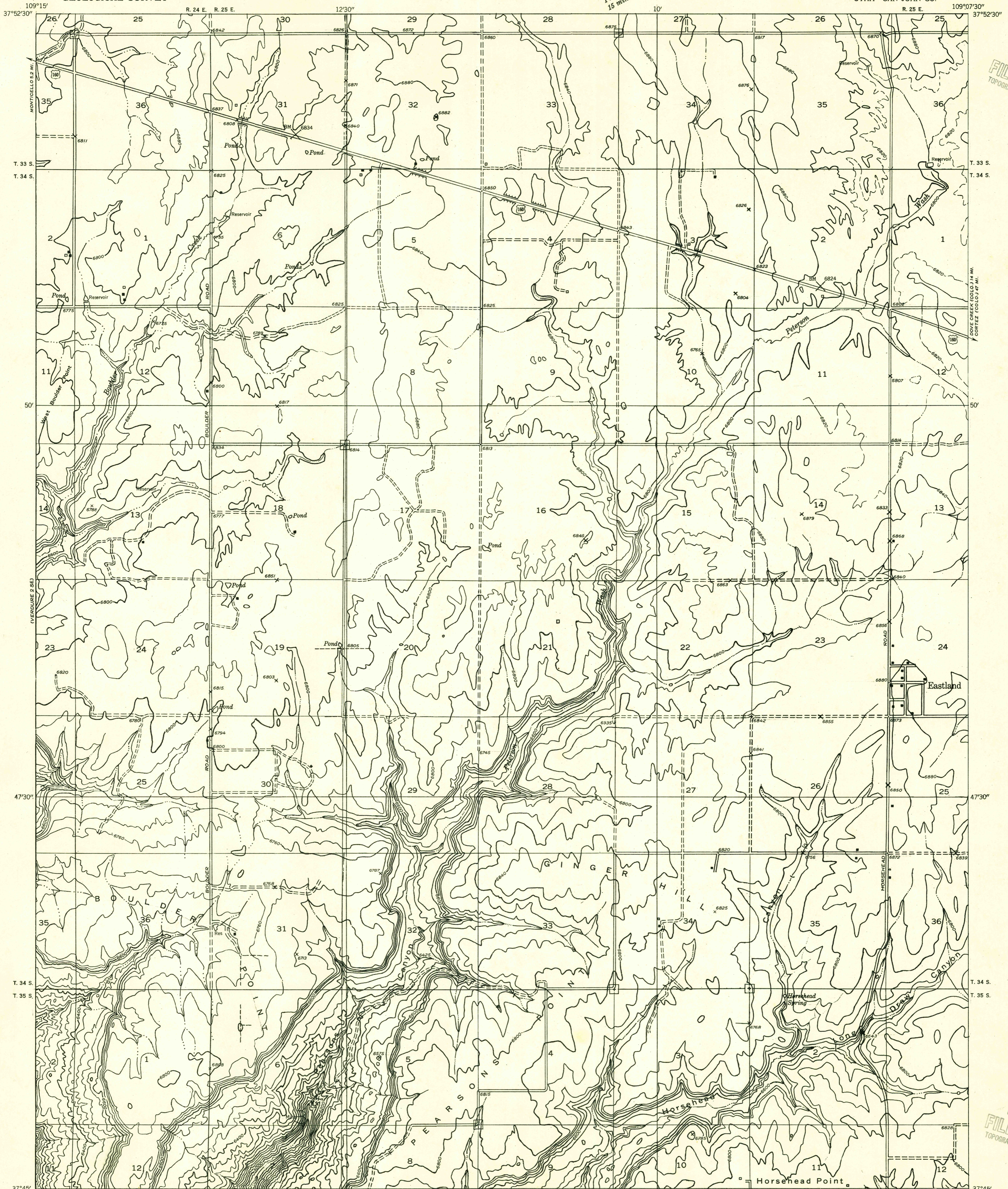


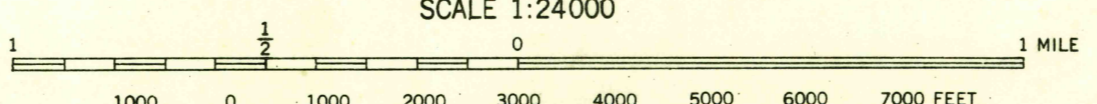
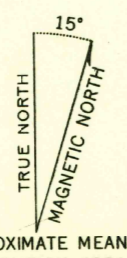
Preliminary edition  
Pending completion of 1:62,500 scale  
15 minute maps covering this area



U.S.G.S.  
FILE COPY  
TOPOGRAPHIC DIVISION

U.S.G.S.  
FILE COPY  
TOPOGRAPHIC DIVISION

Mapped by the Geological Survey 1954  
Topography by multiplex methods from  
aerial photographs taken 1953



SCALE 1:24000  
CONTOUR INTERVAL 40 FEET  
DATUM IS MEAN SEA LEVEL

U.S.G.S.  
Historical File  
Topographic Division

ROAD CLASSIFICATION  
Improved ——— Unimproved - - - - -

VERDURE 1 SW, UTAH  
N3745-W10907.5/7.5

AUG 16 1955  
2050