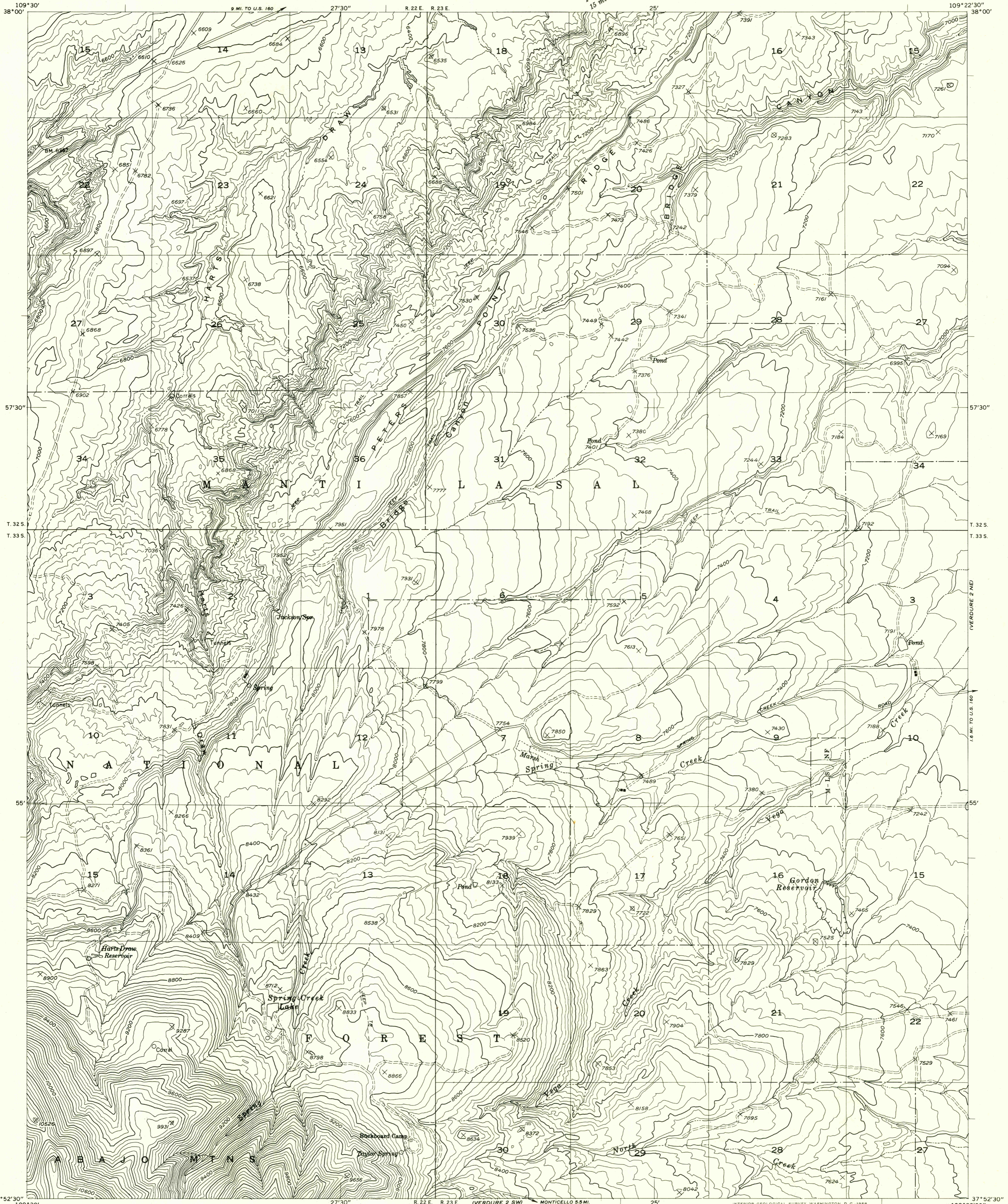
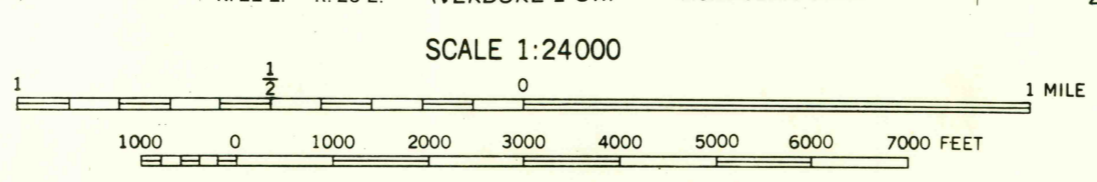


Preliminary edition  
Pending completion of 1:62,500 scale  
15 minute maps covering this area



Mapped by the Geological Survey 1957  
Topography by Kelsch plotter from  
aerial photographs taken 1955  
Dashed land lines indicate approximate locations  
Symbols and other detail herein  
drawn for 1:62 500 scale publication



USGS  
Historical File  
Topographic Division

ROAD CLASSIFICATION  
Improved ——— Unimproved - - - - -

CONTOUR INTERVAL 40 FEET  
DATUM IS MEAN SEA LEVEL

U.S.G.S.  
FILE COPY  
TOPOGRAPHIC DIVISION

VERDURE 2 NW, UTAH  
N3752.5—W10922.5/7.5