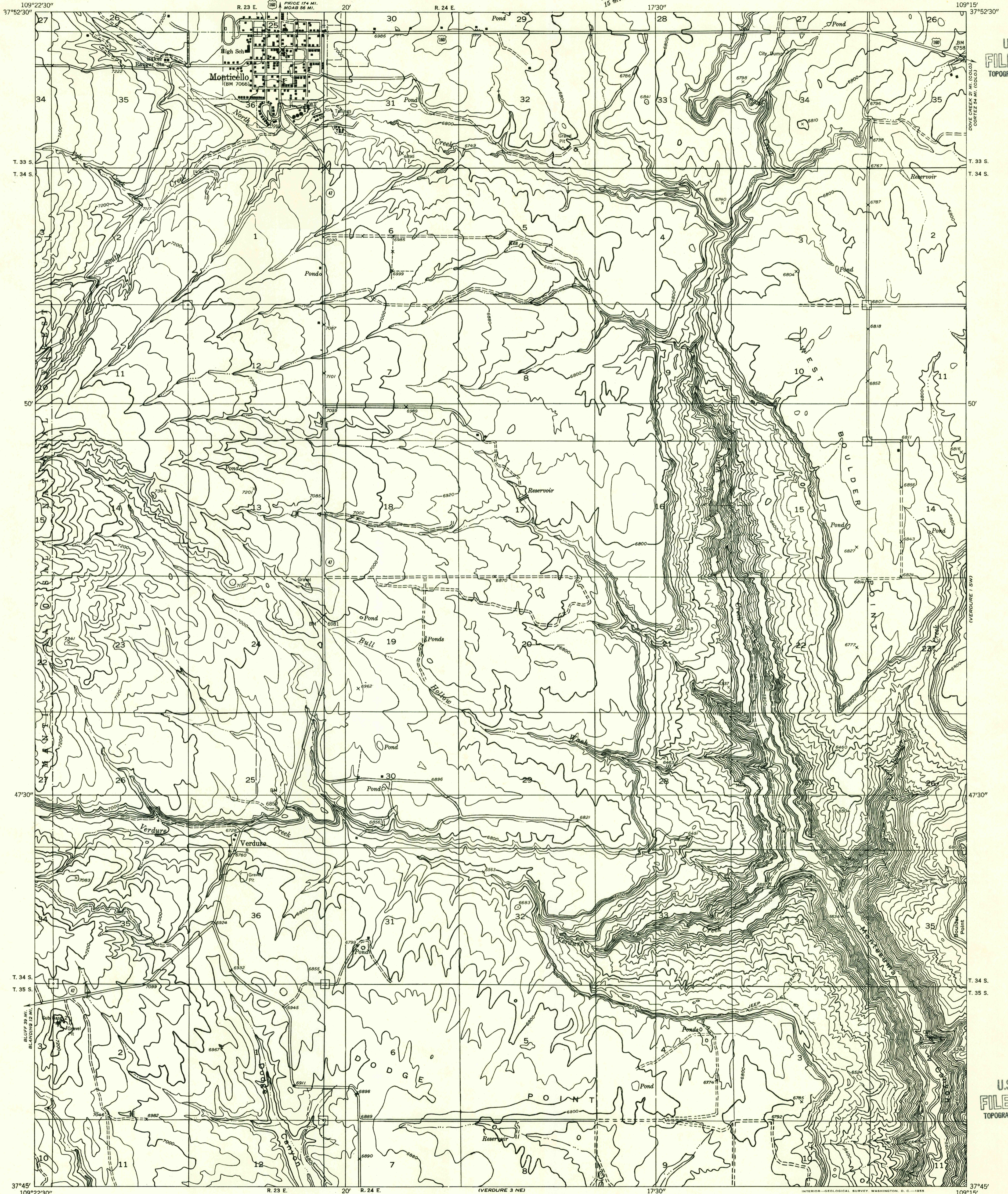


Preliminary edition  
Pending completion of 1:62,500 scale  
15 minute maps covering this area

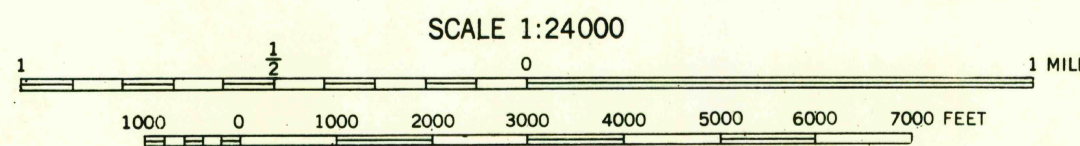
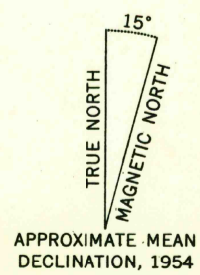


U.S.G.S.  
FILE COPY  
TOPOGRAPHIC DIVISION

U.S.G.S.  
FILE COPY  
TOPOGRAPHIC DIVISION

Mapped by the Geological Survey 1954

Topography by multiplex methods from  
aerial photographs taken 1953



SCALE 1:24,000  
CONTOUR INTERVAL 40 FEET  
DATUM IS MEAN SEA LEVEL

USGS  
Historical File  
Topographic Division

ROAD CLASSIFICATION  
Improved ——— Unimproved - - - - -

VERDURE 2 SE, UTAH  
N3745—W10915/7.5

AUG 12 1955

VERDURE 4 NW

2025