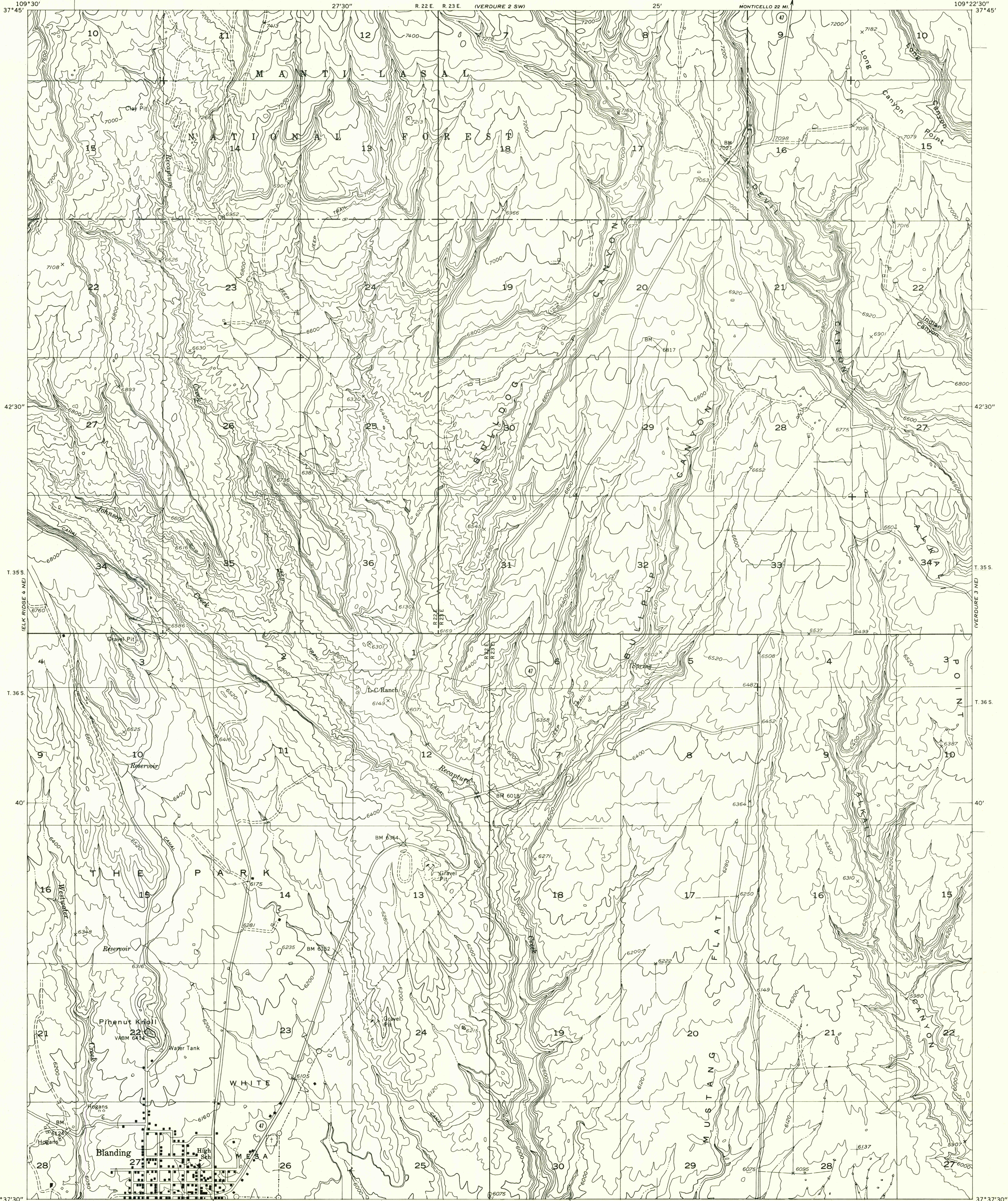
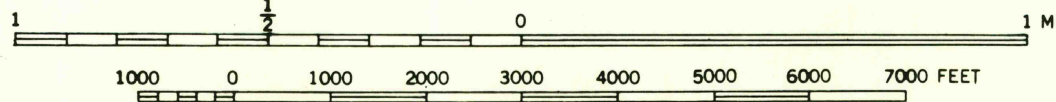


Preliminary edition  
Pending completion of 1:62,500 scale  
15 minute maps covering this area



Mapped by the Geological Survey 1957  
Topography by multiplex methods from  
aerial photographs taken 1955  
Symbols and other detail herein  
drawn for 1:62,500 scale publication



SCALE 1:24000

CONTOUR INTERVAL 40 FEET  
DATUM IS MEAN SEA LEVEL

USGS  
Historical File  
Topographic Division

ROAD CLASSIFICATION  
Improved ——— Unimproved - - - - -

U.S.G.S.  
FILE COPY  
TOPOGRAPHIC DIVISION

VERDURE 3 NW, UTAH  
N3737.5-W10922.5/7.5

FEB 17 1959

1965