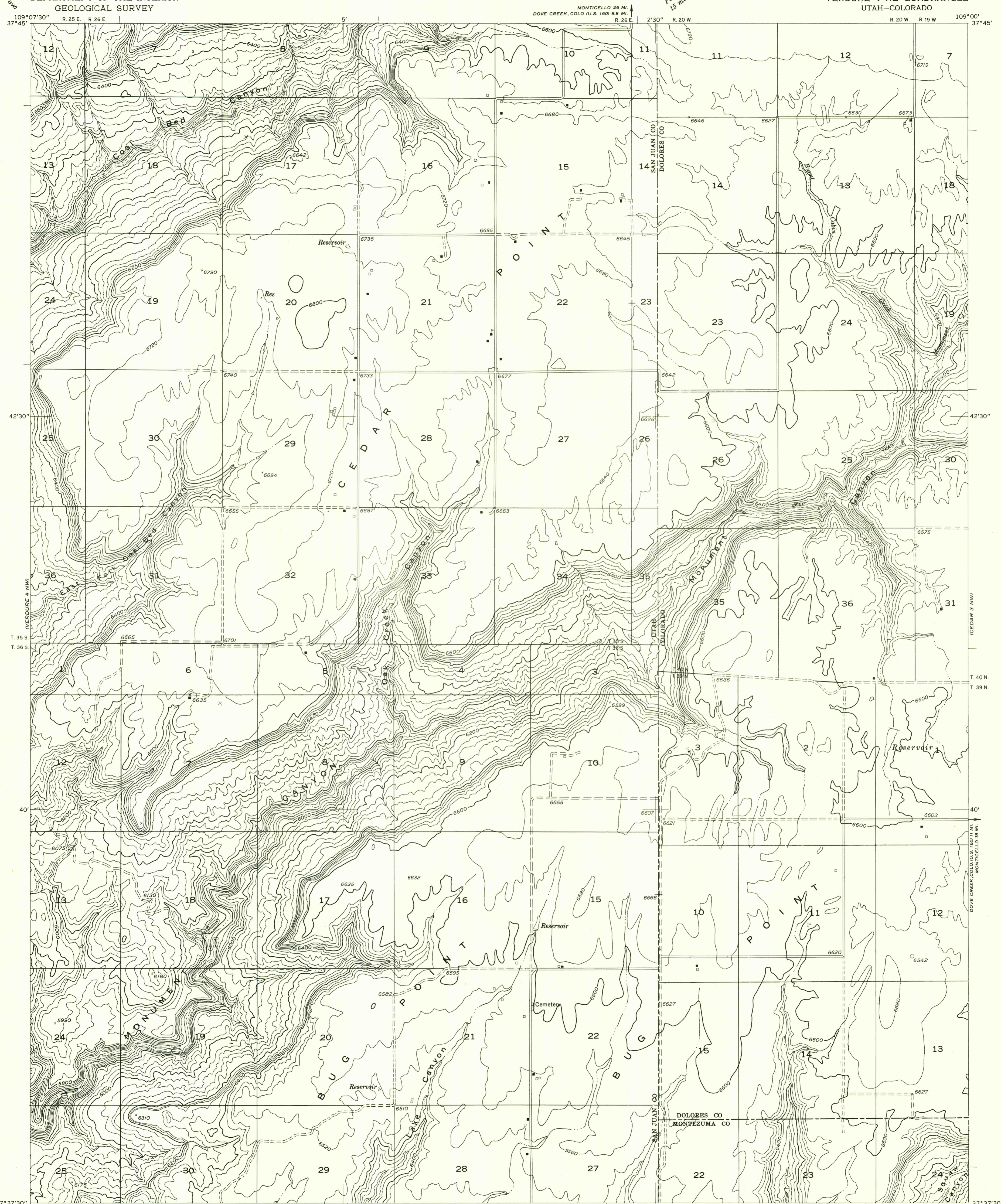


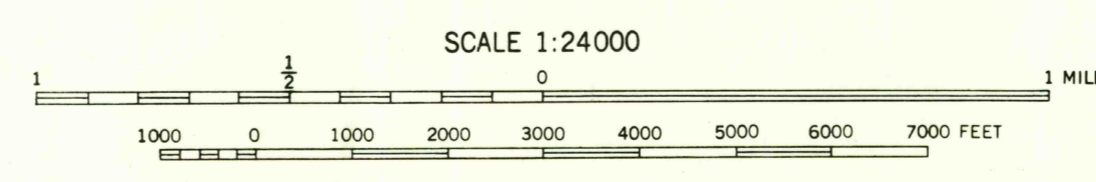
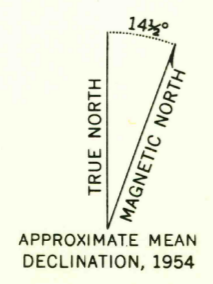
DEPARTMENT OF THE INTERIOR  
GEOLOGICAL SURVEY

VERDURE 4 NE QUADRANGLE  
UTAH-COLORADO

Preliminary edition  
Pending completion of 1:62,500 scale  
15 minute maps covering this area



Mapped by the Geological Survey 1957  
Topography by multiplex methods from  
aerial photographs taken 1955  
Symbols and other detail herein  
drawn for 1:62,500 scale publication



SCALE 1:24000  
CONTOUR INTERVAL 40 FEET  
DATUM IS MEAN SEA LEVEL

USGS  
Historical File  
Topographic Division

ROAD CLASSIFICATION  
Improved ——— Unimproved - - - - -

U.S.G.S.  
FILE COPY  
TOPOGRAPHIC DIVISION

VERDURE 4 NE, UTAH-COLO.  
N3737.5-W10900/7.5

JUL 15 1956  
1965