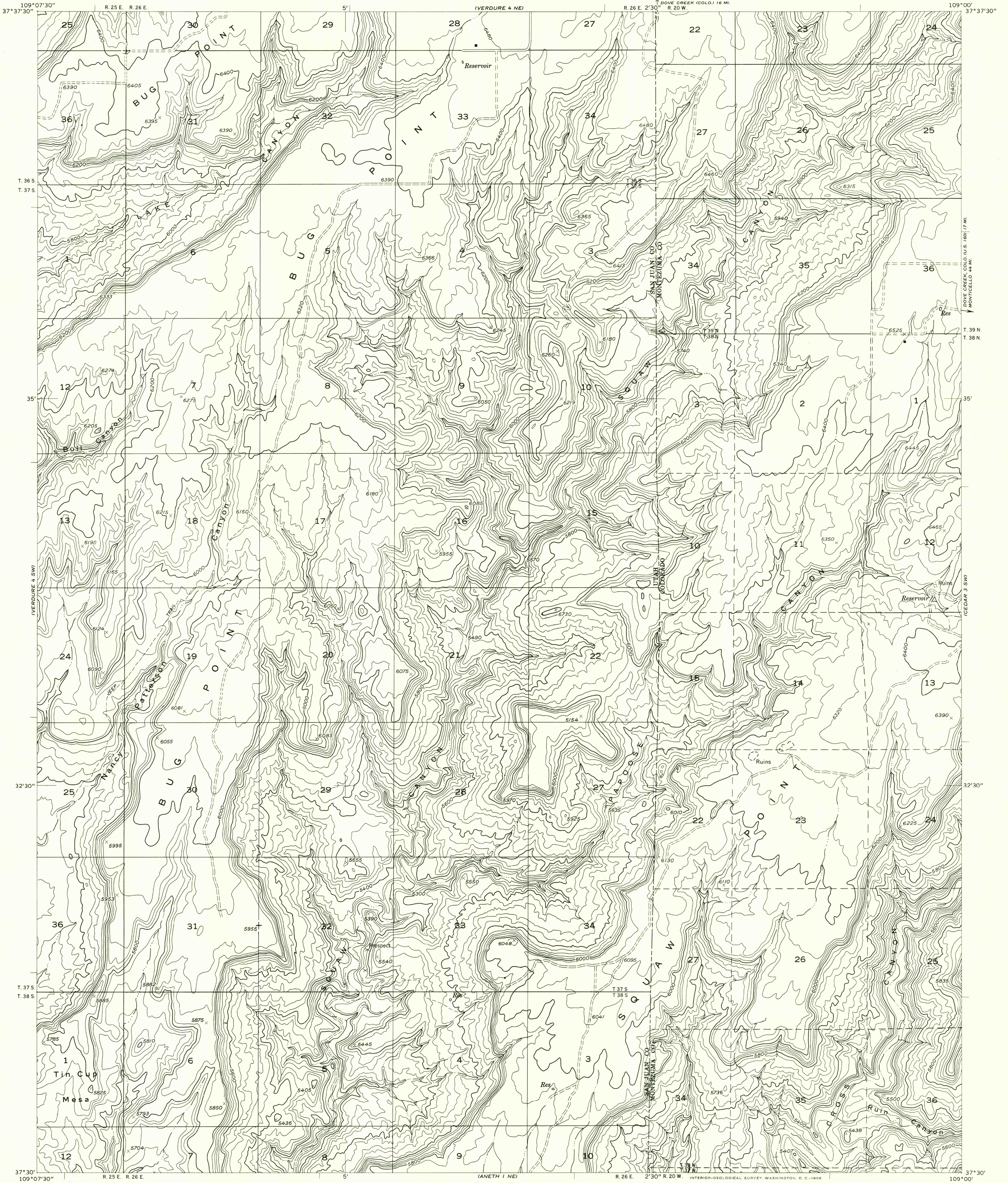


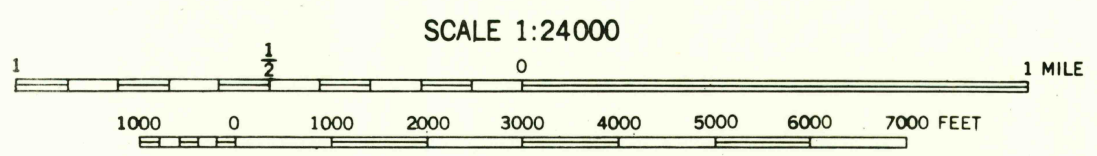
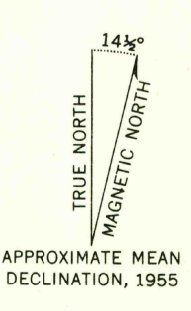
DEPARTMENT OF THE INTERIOR
GEOLOGICAL SURVEY

Preliminary edition
Pending completion of 1:62,500 scale
15 minute maps covering this area

VERDURE 4 SE QUADRANGLE
UTAH-COLORADO



Mapped by the Geological Survey 1957
Topography by multiplex methods from
aerial photographs taken 1955
Dashed land lines indicate approximate locations
Symbols and other detail herein
drawn for 1:62,500 scale publication



SCALE 1:24000
CONTOUR INTERVAL 40 FEET
DATUM IS MEAN SEA LEVEL

USGS
Historical File
Topographic Division

ROAD CLASSIFICATION
Improved ——— Unimproved - - - - -

U.S.G.S.
FILE COPY
TOPOGRAPHIC DIVISION

VERDURE 4 SE, UTAH-COLO.
N3730-W10900/7.5

JUL 15 1958
1965