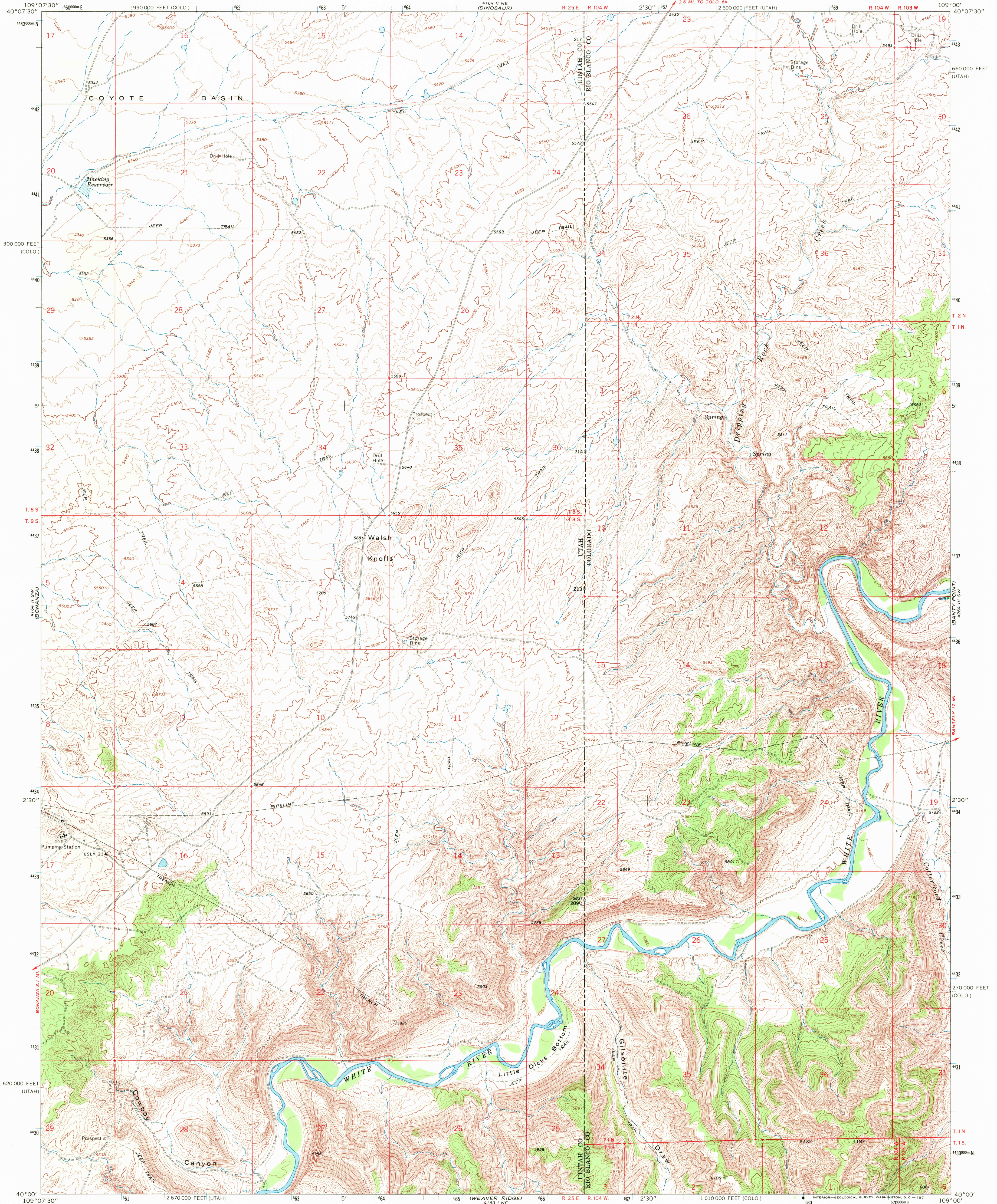
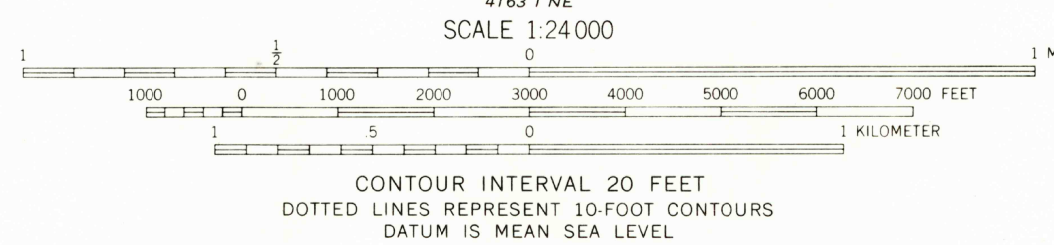
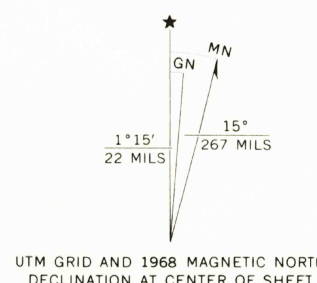


UNITED STATES
DEPARTMENT OF THE INTERIOR
GEOLOGICAL SURVEY

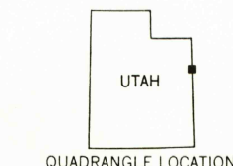
WALSH KNOLLS QUADRANGLE
UTAH-COLORADO
7.5 MINUTE SERIES (TOPOGRAPHIC)



Mapped, edited, and published by the Geological Survey
Control by USGS and USC&GS
Topography by photogrammetric methods from aerial photographs taken 1965. Field checked 1968
Polyconic projection, 1927 North American datum, 10,000-foot grids based on Utah coordinate system, central zone, and Colorado coordinate system, north zone 1000-meter Universal Transverse Mercator grid ticks, zone 12, shown in blue
Fine red dashed lines indicate selected fence lines



USGS
Historical File
Topographic Division



ROAD CLASSIFICATION

Light-duty road, all weather, improved surface	Unimproved road, fair or dry weather
--	--------------------------------------

THIS MAP COMPLIES WITH NATIONAL MAP ACCURACY STANDARDS
FOR SALE BY U. S. GEOLOGICAL SURVEY, DENVER, COLORADO 80225, OR WASHINGTON, D. C. 20242
A FOLDER DESCRIBING TOPOGRAPHIC MAPS AND SYMBOLS IS AVAILABLE ON REQUEST

WALSH KNOLLS, UTAH-COLO.
N4000-W10900/7.5

1968

AMS 4164 II SE-SERIES V897

2825
U.S.G.S.
FILE COPY
TOPOGRAPHIC DIVISION