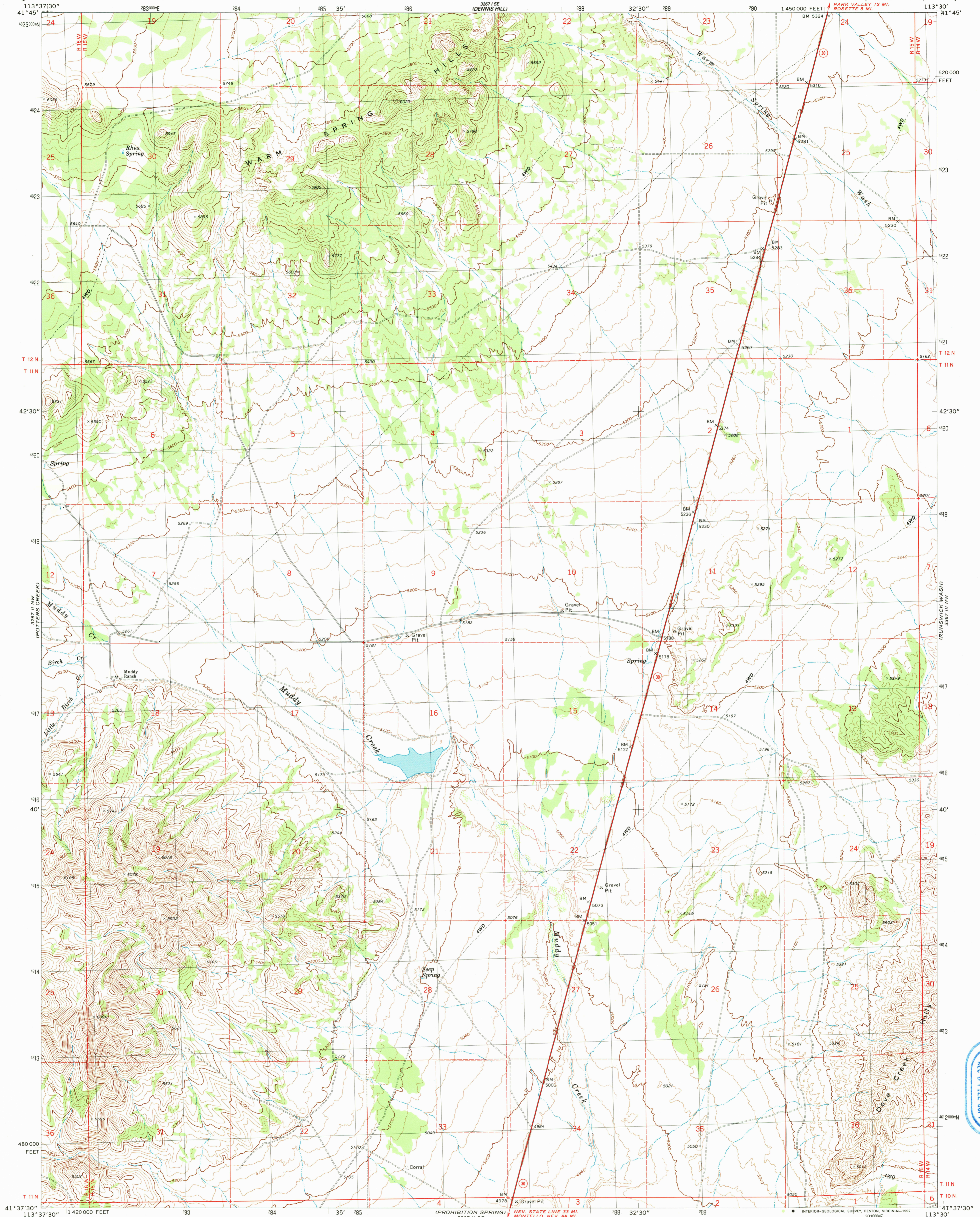


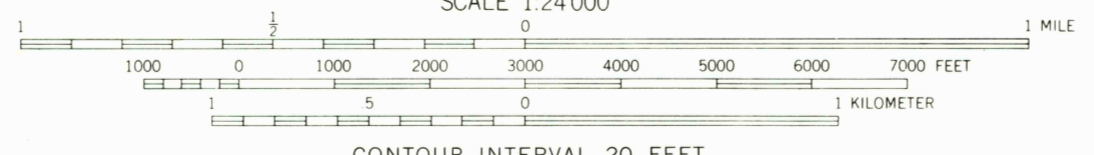
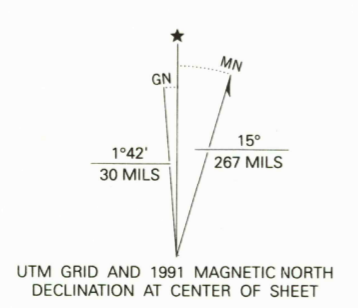
UNITED STATES  
 GEOLOGICAL SURVEY

WARM SPRING HILLS QUADRANGLE  
 UTAH—BOX ELDER CO.  
 7.5 MINUTE SERIES (TOPOGRAPHIC)



USGS AND HISTORICAL  
 MAP ARCHIVES  
 MAR 19 1992  
 REC'D FILE COPY

Produced by the United States Geological Survey  
 Control by USGS and NOS/NOAA  
 Compiled from aerial photographs taken 1968. Revised from aerial photographs taken 1987. Field checked 1990. Map edited 1991  
 North American Datum of 1927 (NAD 27). Projection and 10 000-foot grid ticks: Utah Coordinate System, north zone (Lambert Conformal Conic). 1000-meter Universal Transverse Mercator grid, zone 12  
 The difference between NAD 27 and North American Datum of 1983 (NAD 83) for 7.5 minute intersections is given in USGS Bulletin 1875. The NAD 83 is shown by dashed corner ticks  
 Fine red dashed lines indicate selected fence lines



CONTOUR INTERVAL 20 FEET  
 DOTTED LINES REPRESENT 10-FOOT CONTOURS  
 NATIONAL GEODETIC VERTICAL DATUM OF 1929

THIS MAP COMPLIES WITH NATIONAL MAP ACCURACY STANDARDS  
 FOR SALE BY U.S. GEOLOGICAL SURVEY  
 DENVER, COLORADO 80225, OR RESTON, VIRGINIA 22092  
 A FOLDER DESCRIBING TOPOGRAPHIC MAPS AND SYMBOLS IS AVAILABLE ON REQUEST



ROAD CLASSIFICATION  
 Primary highway, hard surface  
 Secondary highway, hard surface  
 Light-duty road, hard or improved surface  
 Unimproved road  
 Interstate Route  
 U.S. Route  
 State Route

WARM SPRING HILLS, UTAH  
 41113-F5-TF-024

1991

DMA 3267 II NE-SERIES V897