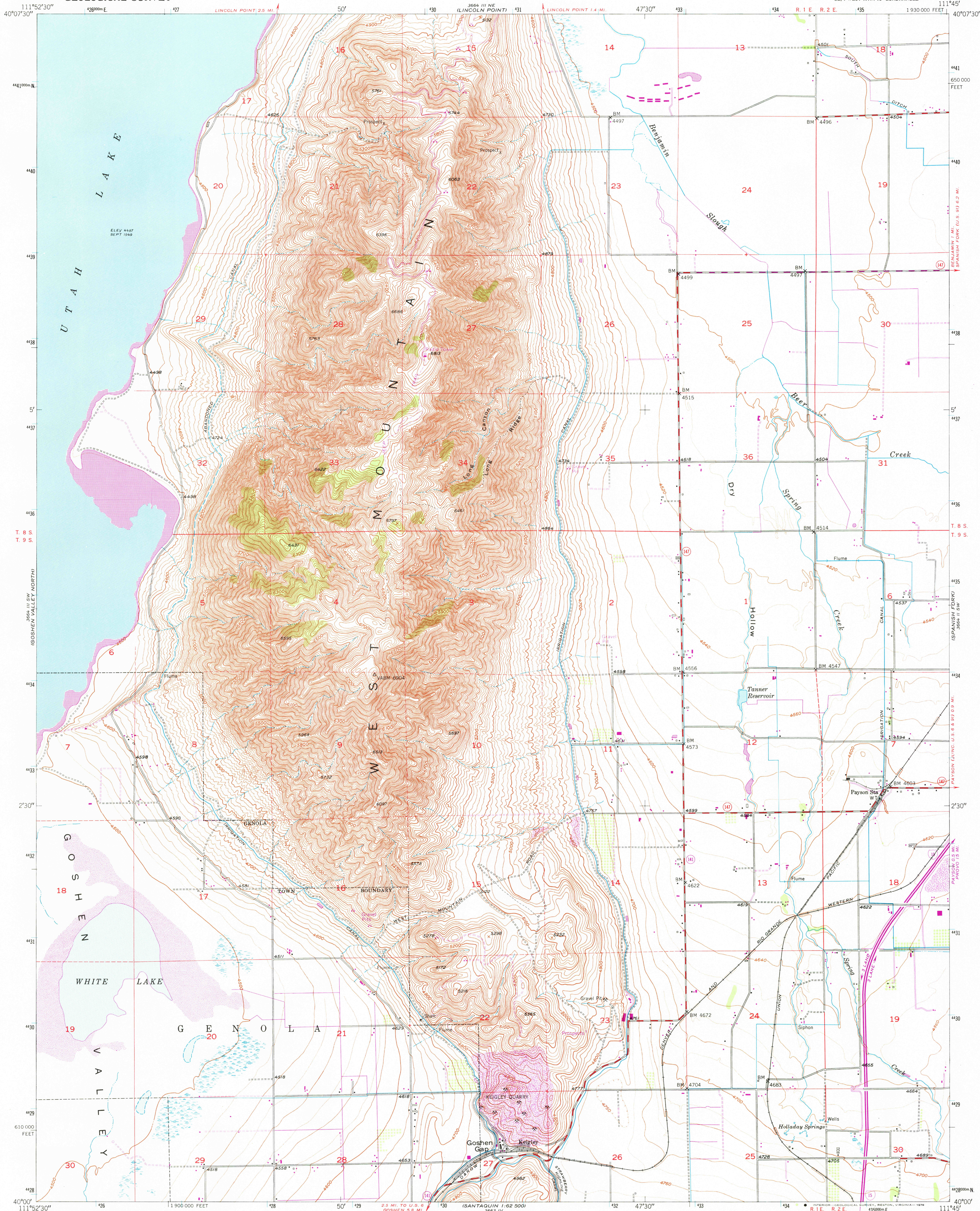


UNITED STATES
DEPARTMENT OF THE INTERIOR
GEOLOGICAL SURVEY

WEST MOUNTAIN QUADRANGLE
UTAH-UTAH CO.
7.5 MINUTE SERIES (TOPOGRAPHIC)
SE/4 WEST MTN. 15' QUADRANGLE



Mapped, edited, and published by the Geological Survey

Control by USGS, NOS/NOAA, USBR and State of Utah

Topography from aerial photographs by multiplex methods

and by plane-table surveys 1950

Aerial photographs taken 1947

Polyconic projection. 1927 North American datum

10,000-foot grid based on Utah coordinate system,

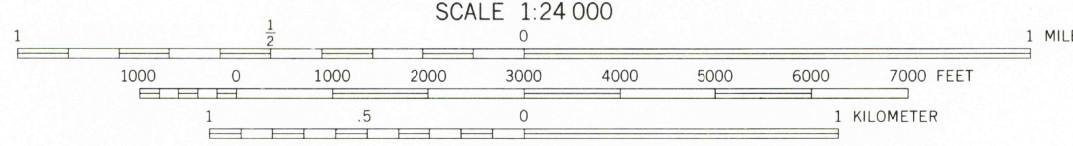
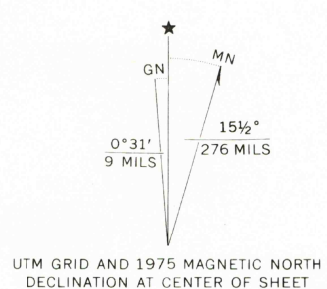
central zone

1000-meter Universal Transverse Mercator grid ticks,

zone 12, shown in blue

Revisions shown in purple compiled from aerial photographs

taken 1969 and 1975. This information not field checked



CONTOUR INTERVAL 20 FEET

DOTTED LINES REPRESENT 10-FOOT CONTOURS

NATIONAL GEODETIC VERTICAL DATUM OF 1929

THIS MAP COMPLIES WITH NATIONAL MAP ACCURACY STANDARDS
FOR SALE BY U.S. GEOLOGICAL SURVEY, DENVER, COLORADO 80225, OR RESTON, VIRGINIA 22092
A FOLDER DESCRIBING TOPOGRAPHIC MAPS AND SYMBOLS IS AVAILABLE ON REQUEST



ROAD CLASSIFICATION
Heavy-duty ——— Light-duty ———
Medium-duty ——— Unimproved dirt ———
U.S. Route ——— State Route ———
Interstate Route ———

USGS
Historical File
Topographic Division
WEST MOUNTAIN, UTAH
SE/4 WEST MTN. 15' QUADRANGLE
N4000—W11145/7.5

AUG 22 1978

1950
PHOTOREVISED 1969 AND 1975
AMS 3664 III SE—SERIES V897