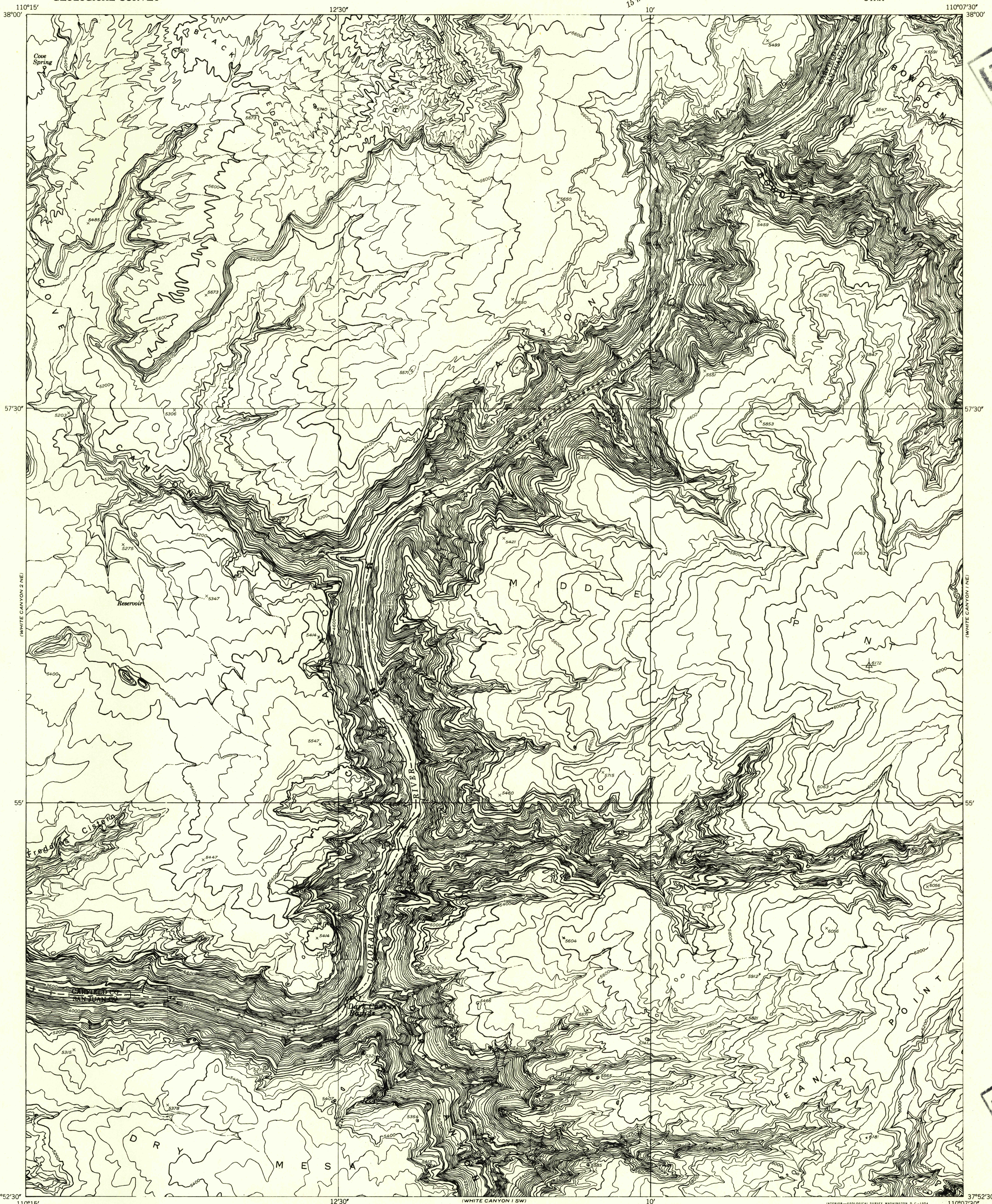


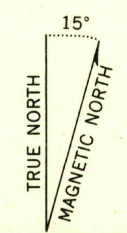
Preliminary edition
Pending completion of 1:62,500 scale
15 minute maps covering this area



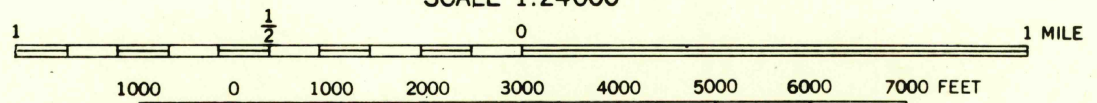
U.S.G.S.
FILE COPY
Library of Congress

U.S.G.S.
FILE COPY
Library of Congress

Mapped by the Geological Survey 1952
Topography by multiplex methods from
aerial photographs taken 1951



APPROXIMATE MEAN
DECLINATION, 1948



SCALE 1:24000
CONTOUR INTERVAL 40 FEET
DATUM IS MEAN SEA LEVEL

USGS
Historical File
Topographic Division

ROAD CLASSIFICATION
Improved ——— Unimproved - - - - -

WHITE CANYON 1 NW, UTAH
N3752.5-W11007.5/7.5

JUN 24 1954