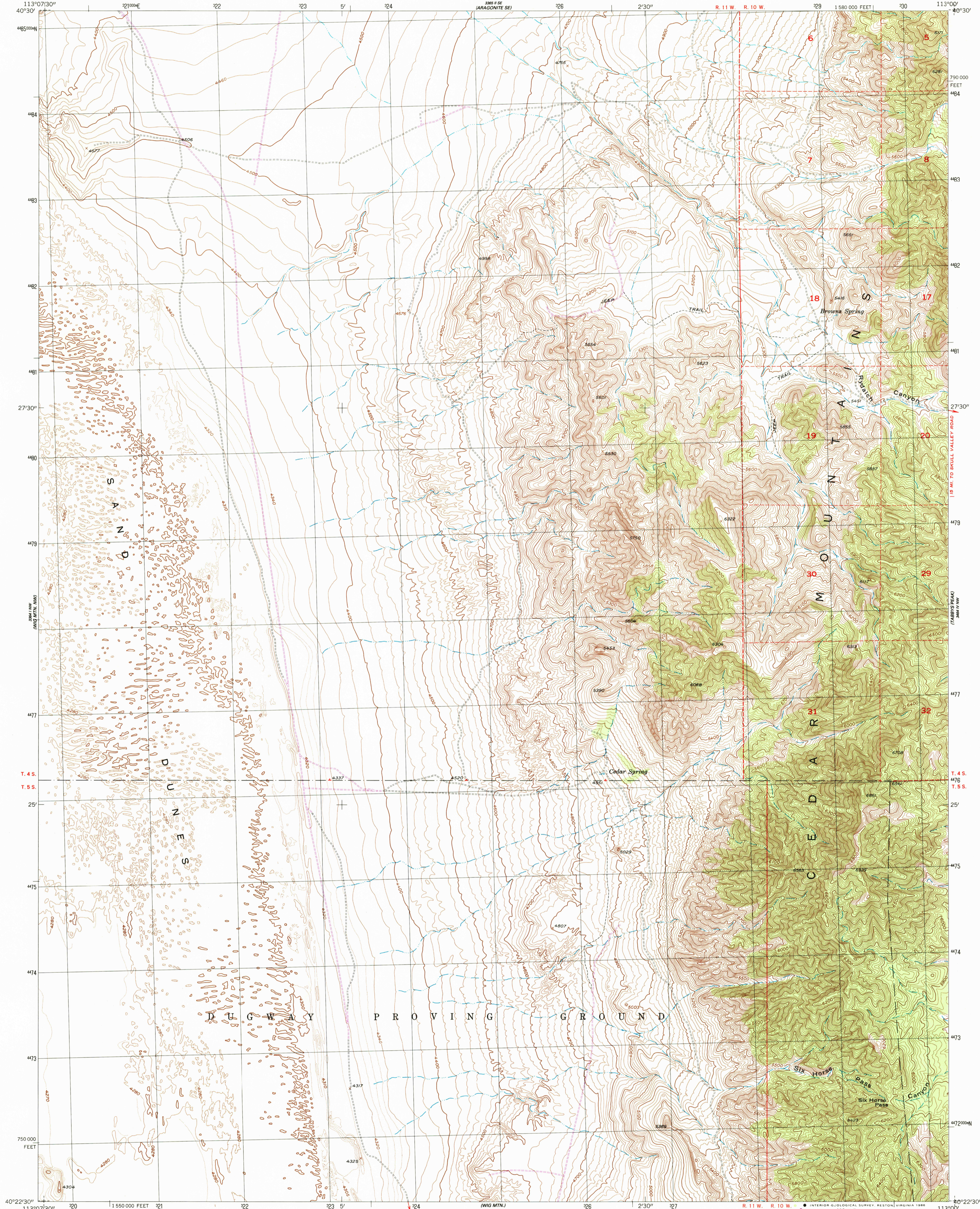
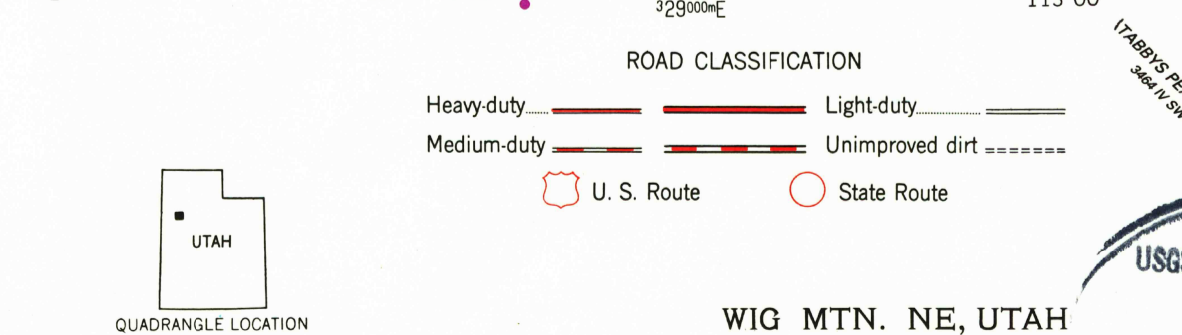
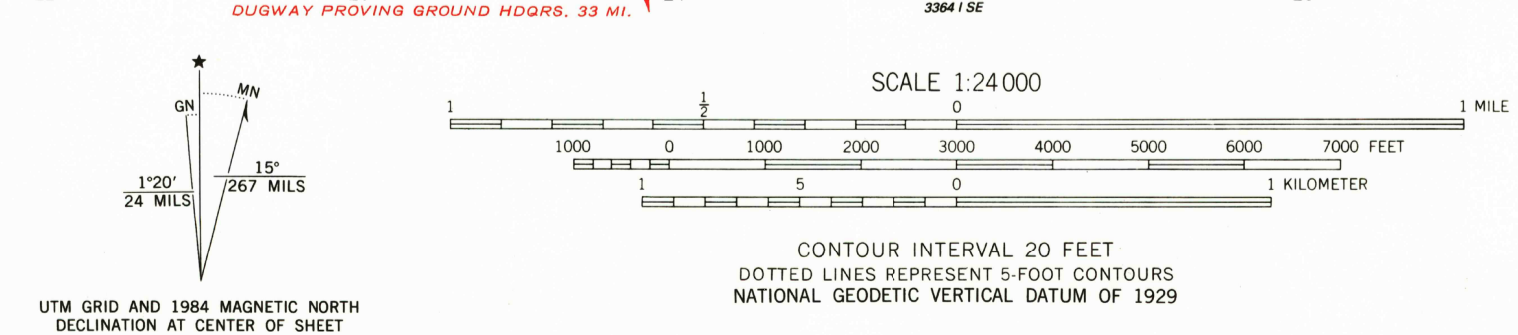


UNITED STATES  
DEPARTMENT OF THE INTERIOR  
GEOLOGICAL SURVEY

WIG MTN. NE QUADRANGLE  
UTAH—TOOELE CO.  
7.5 MINUTE SERIES (TOPOGRAPHIC)



Mapped, edited, and published by the Geological Survey  
Control by USGS and NOS/NOAA  
Topography by photogrammetric methods from aerial photographs taken 1953 and planetable surveys 1955  
Polycyclic projection. 10,000-foot grid ticks based on Utah coordinate system, central zone  
1000-meter Universal Transverse Mercator grid, zone 12  
1927 North American Datum  
To place on the predicted North American Datum 1983 move the projection lines 10 meters north and 68 meters east as shown by dashed corner ticks  
Dashed land lines indicate approximate locations  
There may be private inholdings within the boundaries of the National or State reservations shown on this map



THIS MAP COMPLIES WITH NATIONAL MAP ACCURACY STANDARDS  
FOR SALE BY U. S. GEOLOGICAL SURVEY, DENVER, COLORADO 80225, OR RESTON, VIRGINIA 22092  
A FOLDER DESCRIBING TOPOGRAPHIC MAPS AND SYMBOLS IS AVAILABLE ON REQUEST

Revisions shown in purple and woodland compiled from aerial photographs taken 1982 and other sources  
This information not field checked. Map edited 1984

WIG MTN. NE, UTAH  
40113-D1-TF-024  
1955  
PHOTOREVISED 1984  
DMA 3364 1 NE—SERIES V897

