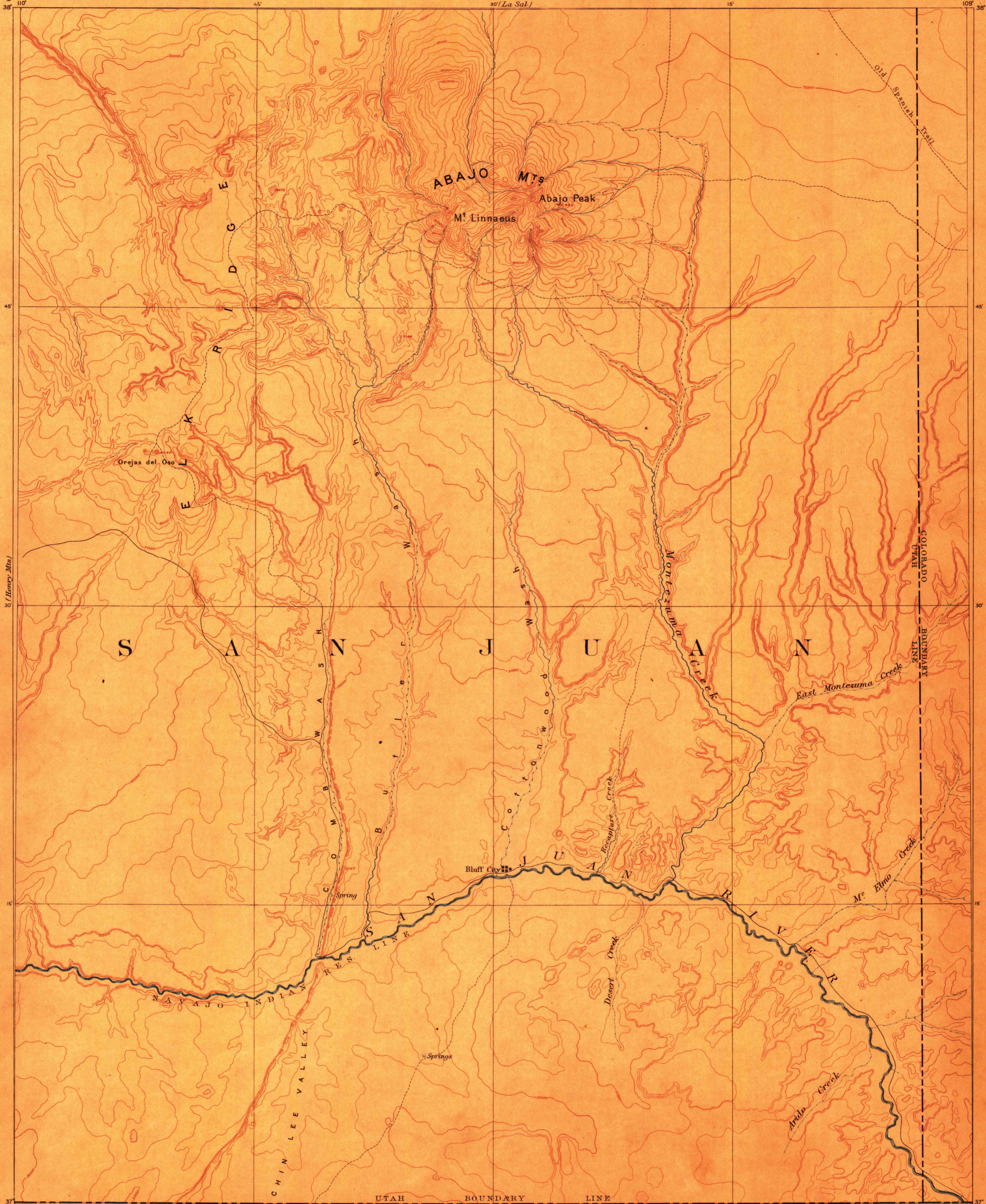


(See Relief)

U.S. GEOLOGICAL SURVEY  
GEORGE OTIS SMITH, DIRECTOR

RECONNAISSANCE MAP

UTAH-COL.  
ABAJO SHEET



(Marsh Pass)  
Henry Gannett, Chief Geographer.  
A. H. Thompson, Geographer in charge.  
Triangulation by A. P. Davis.  
Topography by the U. S. Geological and Hayden Surveys.

P. Bohman  
1884  
Hayden

Scale 250,000  
Contour Interval 250 feet

USGS  
HISTORICAL FILE  
TOPOGRAPHIC DIVISION  
FILE COPY  
Ed. Div. Topographic Maps

Edition of June 1893, reprinted June 1908  
AUG 10 1908 1103

ABAJO  
Utah-Col.