

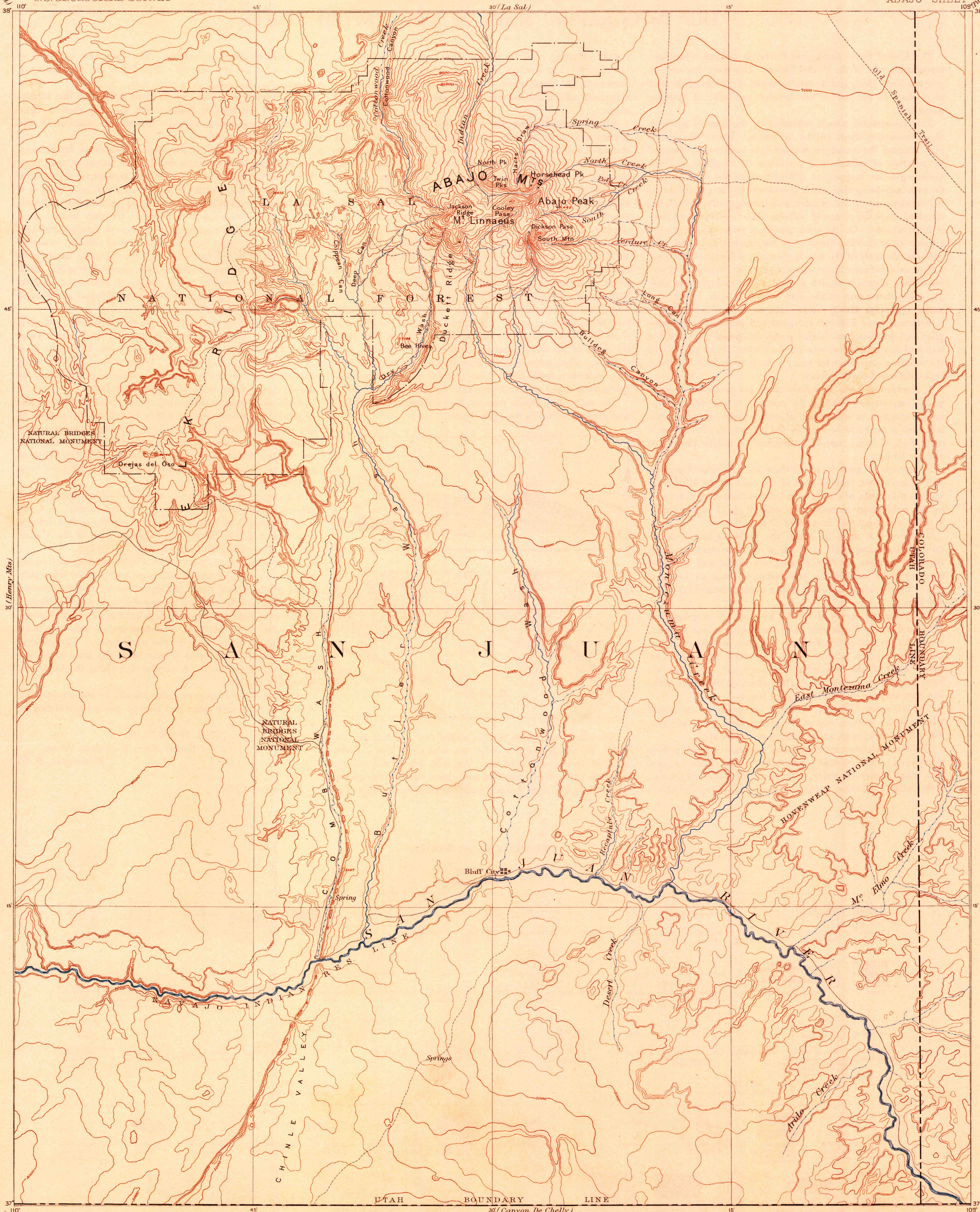
(San Rafael)

DEPARTMENT OF THE INTERIOR
U.S. GEOLOGICAL SURVEY

RECONNAISSANCE MAP

UTAH-COL.
ABAJO SHEET

109° (Parade Valley)
128000



(Marsh Pass)

Henry Gannett, Chief Geographer.
A. H. Thompson, Geographer in charge.
Triangulation by A. P. Davis.
Topography by the U. S. Geological and Hayden Surveys.

P. Hoffman
1884
Hayden

Scale 1:250,000
Contour Interval 250 feet

USGS
HISTORICAL FILE
TOPOGRAPHIC DIVISION

Edition of June 1893, reprinted 1931
Polyconic projection.
ABAJO, UTAH-COL.